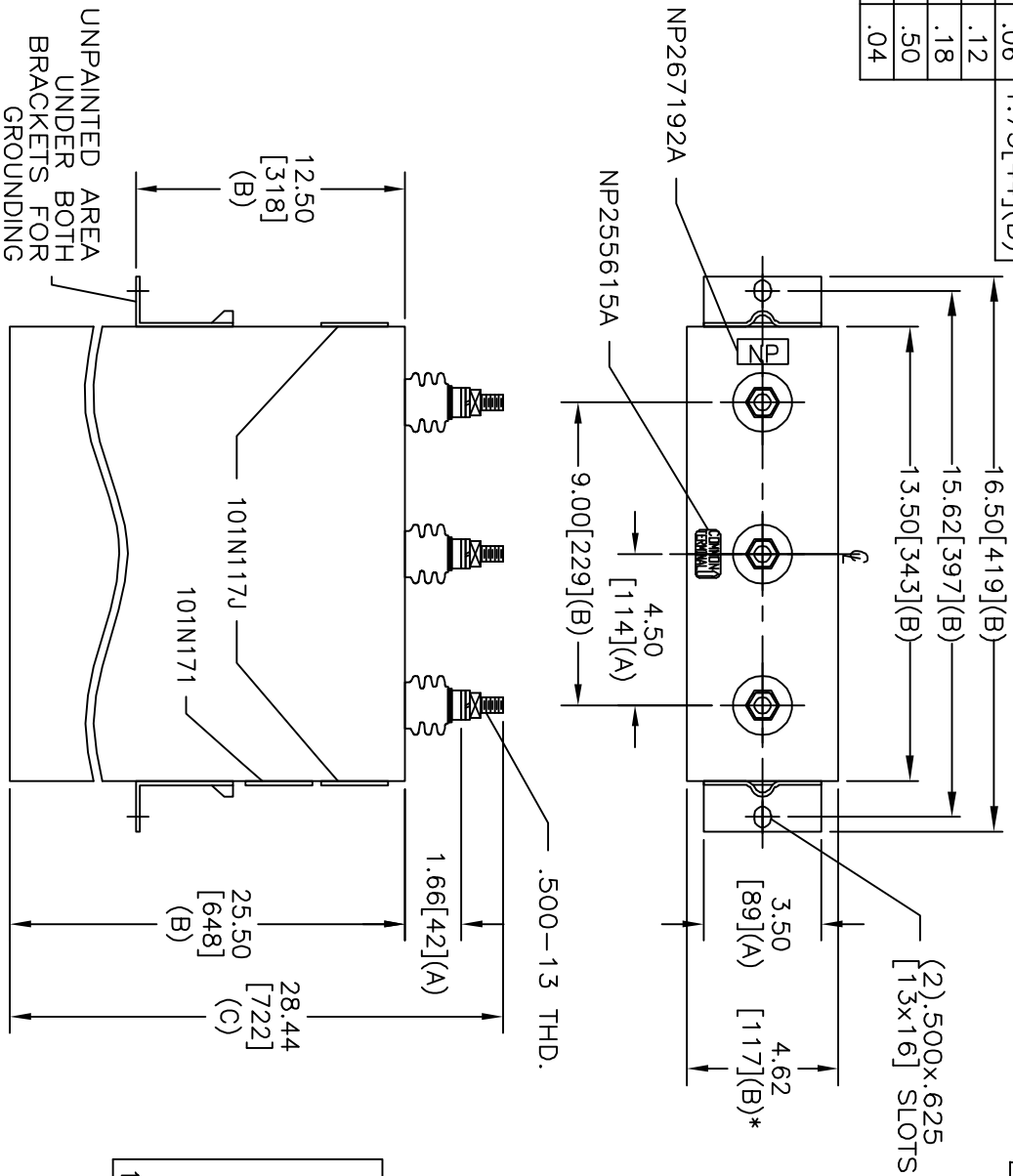
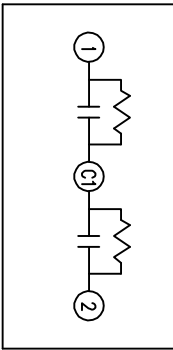


TOL	+/-	BUSH. DIA.
A	.06	1.75[.44](B)
B	.12	
C	.18	
D	.50	
E	.04	



SIZE	DWG NO	SHT	REV
A	16L0128WH3	2	1
REV	DESCRIPTION	DATE	APPROVED
1	RETRACE	3/17/04	BTR

TERM	UF	KVAR
1	169.8	100
2	169.8	100



SCHMATIC DIAGRAM - 227

1250	1 PH	KVBIL
200	KVAR	60 Hz
CAT	16L0128WH3	SN
	2.20 GAL.	
101N171	MFG DATE	
	READ	GEH-2743

\* UP TO +.50[13]  
CASE BULGE

MAX. TERMINAL  
TIGHTENING TORQUE  
15 FT-LBS

NP267192A

 INDUSTRIAL SYSTEMS FORT EDWARD, N.Y., U.S.A.		SIZE	A
DRAWN	E. McGinn	DATE	SEP 30, 1997
ISSUED		DATE	10-1-97
		SCALE	
<h1>OUTLINE</h1> <h2>16L0128WH3</h2>		SHEET	2
		CONT	3

DISTR. TO