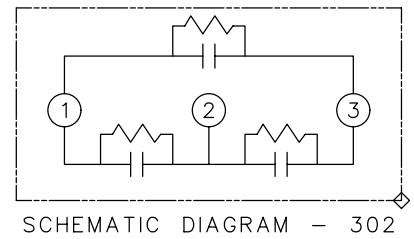
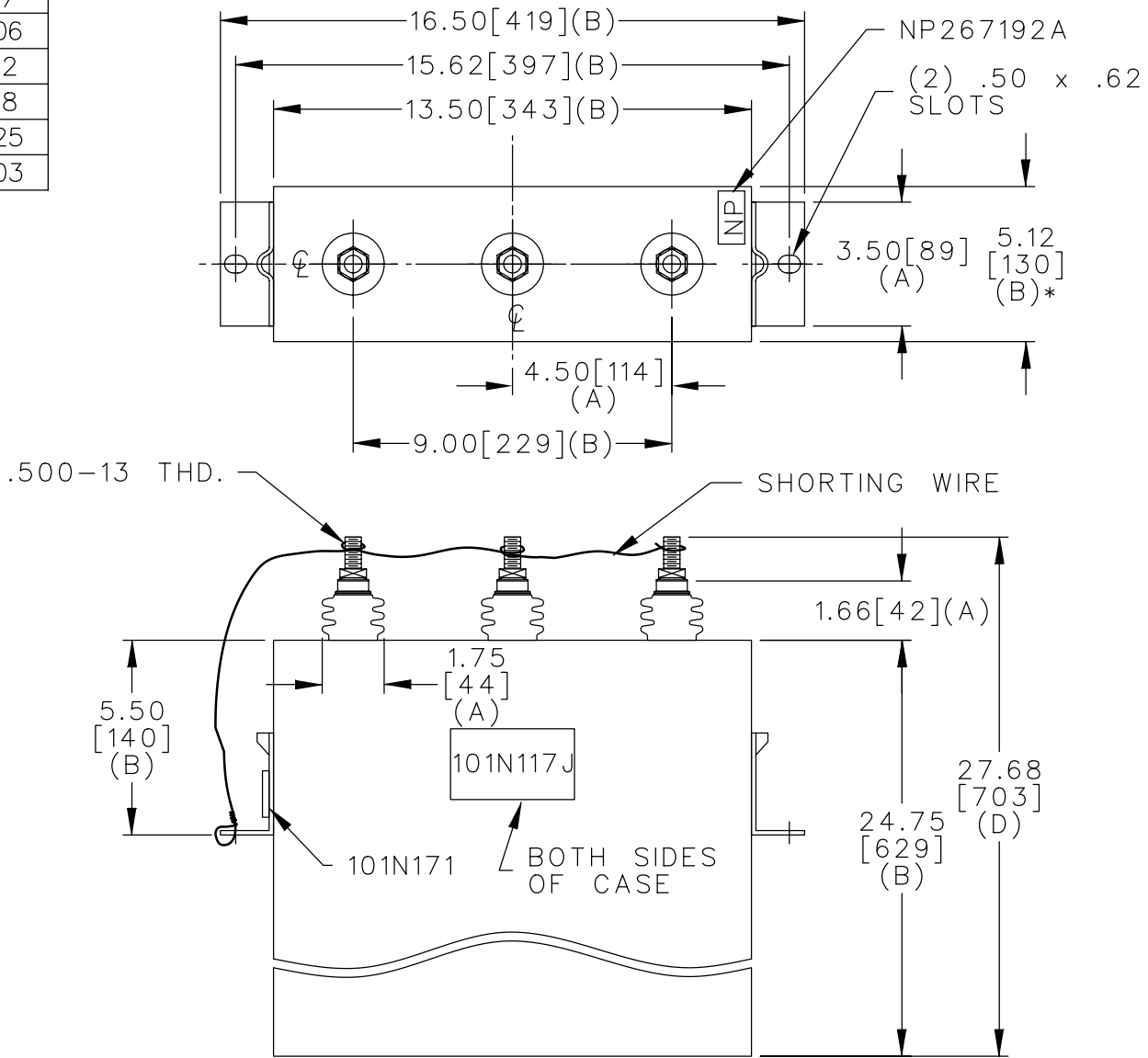


TOL	+/-
A	.06
B	.12
C	.18
D	.25
E	.03

SIZE	DWG NO.	SH	REV
A	16L0130WH3	2	
REV	10/30/99		
4	McGINN ADD SHORTING WIRE		



480V 3 PH-DELTA 30KVBIL
 100 KVAR 60 HZ
 CAT. 16L0130WH3
 2.3 GAL.
 MFG DATE
 101N171 READ GEH-2743

MAX. TERMINAL
 TIGHTENING TORQUE
 15 FT-LBS

NP267192A

	CAPACITOR & POWER PROTECTION FORT EDWARD, N.Y., U.S.A.		SIZE	FSCM NO	<h1>OUTLINE</h1> <h2>16L0130WH3</h2>	DISTR TO
			A			
DRAWN TMO	MAR 11, 1997		SCALE		SHEET 2	CONT 3
ISSUED	3-12-97					