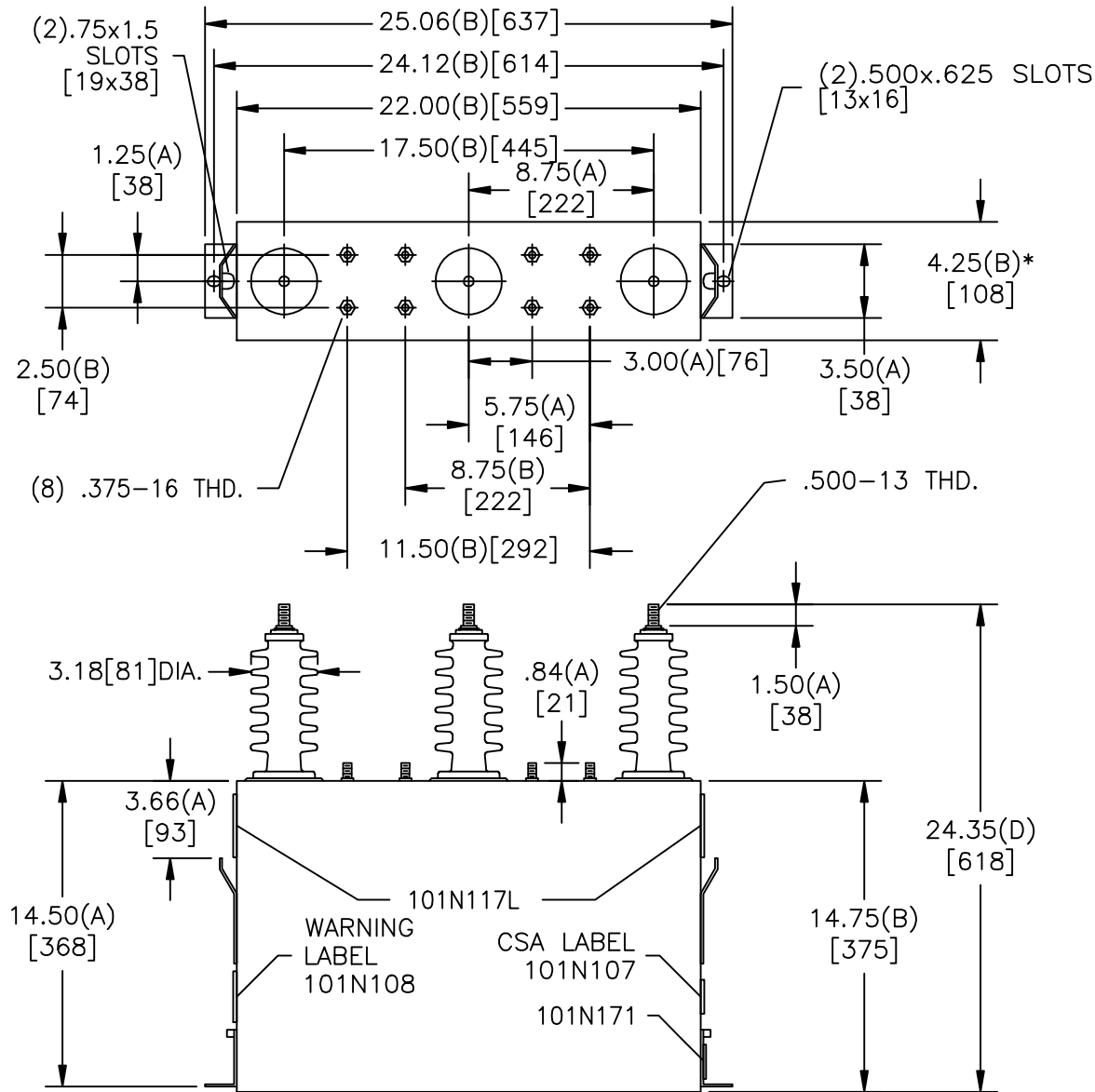
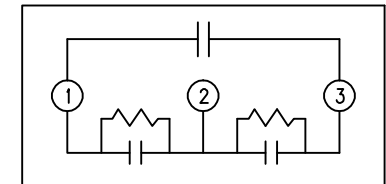


SIZE A	DWG NO 16L0131WH3	SHT 2	REV 3
REV 3	DESCRIPTION BIL WAS BLANK	DATE 10/26/2009	APPROVED BTR



TOL	+/-
A	.06
B	.12
C	.18
D	.25

\* UP TO +.50 CASE BULGE



SCHEMATIC DIAGRAM - 304

6600V      3 PH      95 kVBIL  
 127.3 KVAR      50 Hz  
 CAT 16L0131WH3 SN  
 2.2 GAL.  
 MFG DATE  
 101N171      READ GEH- 2743

	<b>GE ENERGY</b> FORT EDWARD, N.Y., U.S.A.		SIZE <b>A</b>	<h1>OUTLINE</h1> <h2>16L0131WH3</h2>	
	DRAWN E.McGINN	DATE 7/10/1998	SCALE		
ISSUED	DATE 7/15/1998	SHEET 2	CONT ON 3		

DISTR. TO