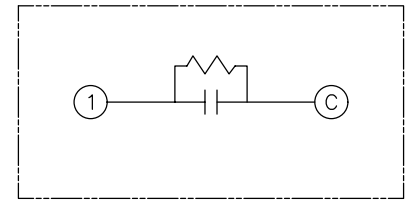
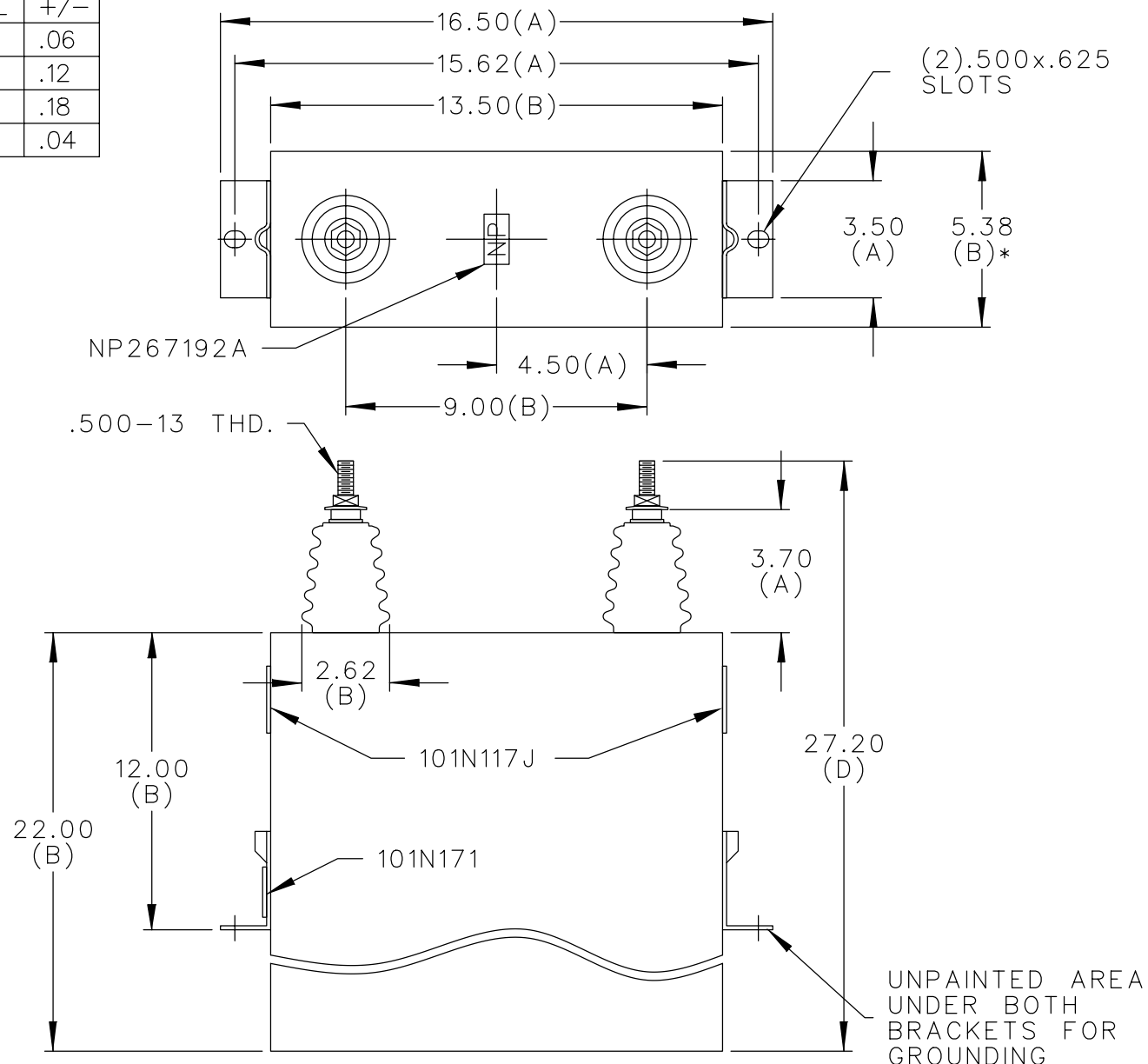


TOL	+/-
A	.06
B	.12
C	.18
D	.04

SIZE A	DWG NO. 16L0138WH3	SH 2	REV
REV 1	McGINN UPDATE NPs		



SCHEMATIC DIAGRAM - 102

2770V 1 PH
 289KVAR 60Hz KVBIL
 CAT. 16L0138WH3
 2.0 GAL.
 MFG DATE
 101N171 READ GEH-2743

* UP TO +.50
 CASE BULGE

MAX. TERMINAL
 TIGHTENING TORQUE
 15 FT-LBS

NP267192A

	CAPACITOR & POWER PROTECTION FORT EDWARD, N.Y., U.S.A.		SIZE A	FSCM NO	OUTLINE 16L0138WH3	SHEET 2 CONT ON 3
	DRAWN E.McGINN	MAY 28, 1998	SCALE	DISTR TO		
ISSUED	6-3-98					