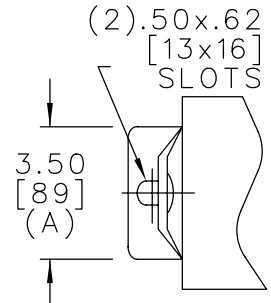


SOLDERLESS CONN. FOR #10 SOLID TO #2 STRD COND.



TOL	in.	mm
A	.06	1.5
B	.12	3.0
C	.18	4.6
D	.25	6.4

4160 V	1 Ph	95 kVBIL
100 kVAR		60 Hz
CAT. 16L0142WH4		
1.3 GAL.		
MFG DATE		
101N138	READ	GEH-2743

UNPAINTED AREA UNDER BOTH BRKTS FOR GROUNDING