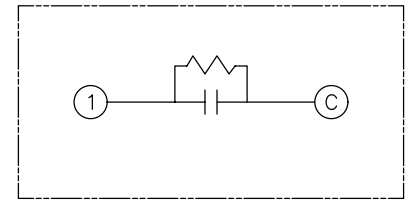
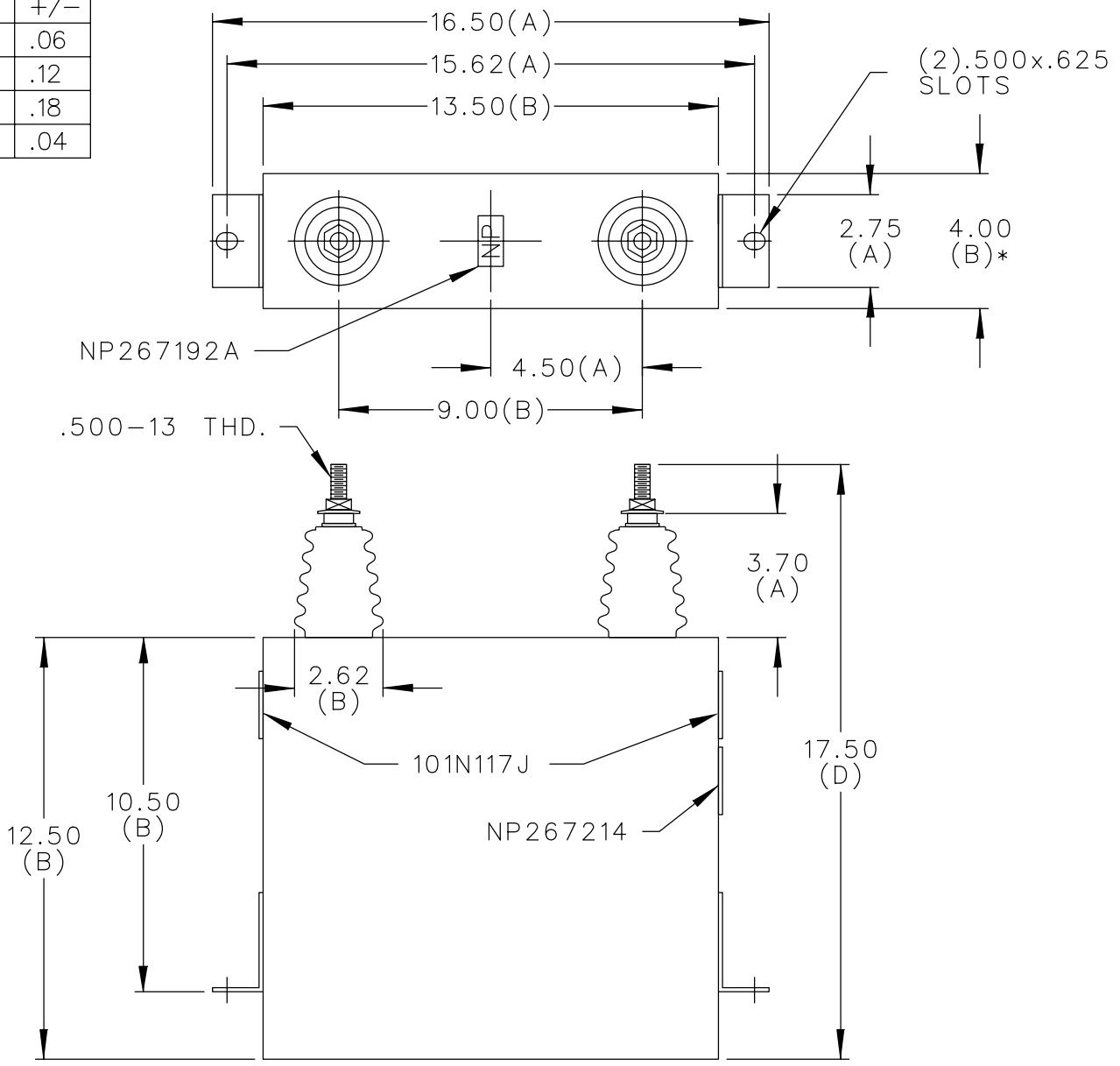


TOL	+/-
A	.06
B	.12
C	.18
D	.04

SIZE <b>A</b>	DWG NO. 16L0143WH3	SH 2	REV
REV 1	McGINN BRKT WPTH WAS 2.50		



SCHEMATIC DIAGRAM - 102

WITH INTERNAL DISCH RESISTORS  
 CAT. 16L0143WH3 SN  
 118.8KVAR 5000V 12.6UF 60HZ  
 1.1 GALS. COMBUSTIBLE LIQUID  
 CAUTION! BEFORE INSTALLING OR  
 OPERATING READ GEH-2743  
 NP267214

\* UP TO +.50  
CASE BULGE

MAX. TERMINAL  
TIGHTENING TORQUE  
15 FT-LBS

NP267192A

	CAPACITOR & POWER PROTECTION FORT EDWARD, N.Y., U.S.A.		SIZE <b>A</b>	FSCM NO	<b>OUTLINE</b> <b>16L0143WH3</b>	SHEET 2 CONT ON 3	DISTR TO
	DRAWN E.McGINN	JAN. 24, 1997	SCALE	NP267192A			
ISSUED	1-30-97	NP267214	NP267192A	NP267192A	NP267192A	NP267192A	NP267192A