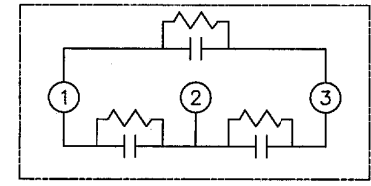
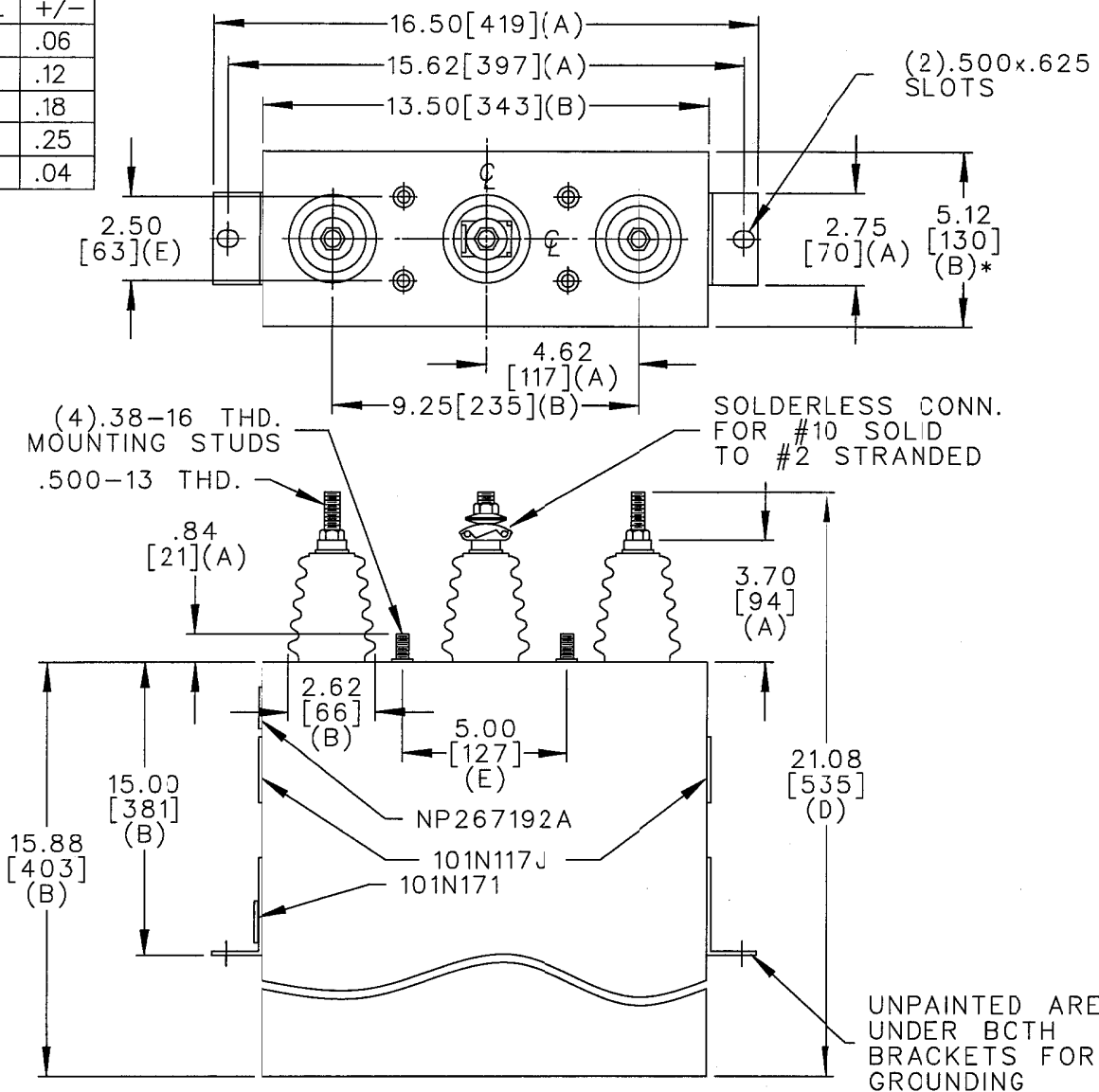


SIZE A	DWG NO. 16L0153WS3	SH 2	REV
REV 2	McGINN UPDATE CAT NO 322		

TOL	+/-
A	.06
B	.12
C	.18
D	.25
E	.04



SCHEMATIC DIAGRAM - 302

2400V 3PH  
 225KVAR 60HZ 60KV BIL  
 CAT. 16L0153WS3 NO.  
 1.75 GAL. MFG DATE  
 GEH-2743

101N171

\* UP TO +.50 [13] CASE BULGE

MAX. TERMINAL TIGHTENING TORQUE 15 FT-LBS

NP267192A

	CAPACITOR & POWER PROTECTION FORT EDWARD, N.Y., U.S.A.		SIZE A	FSCM NO.	<h1>OUTLINE</h1> <h2>16L0153WS3</h2>	DISTR TO
	DRAWN E.McGINN ISSUED 7-9-97	JULY 8, 1997	SCALE	SHEET 2 CONT ON 3		