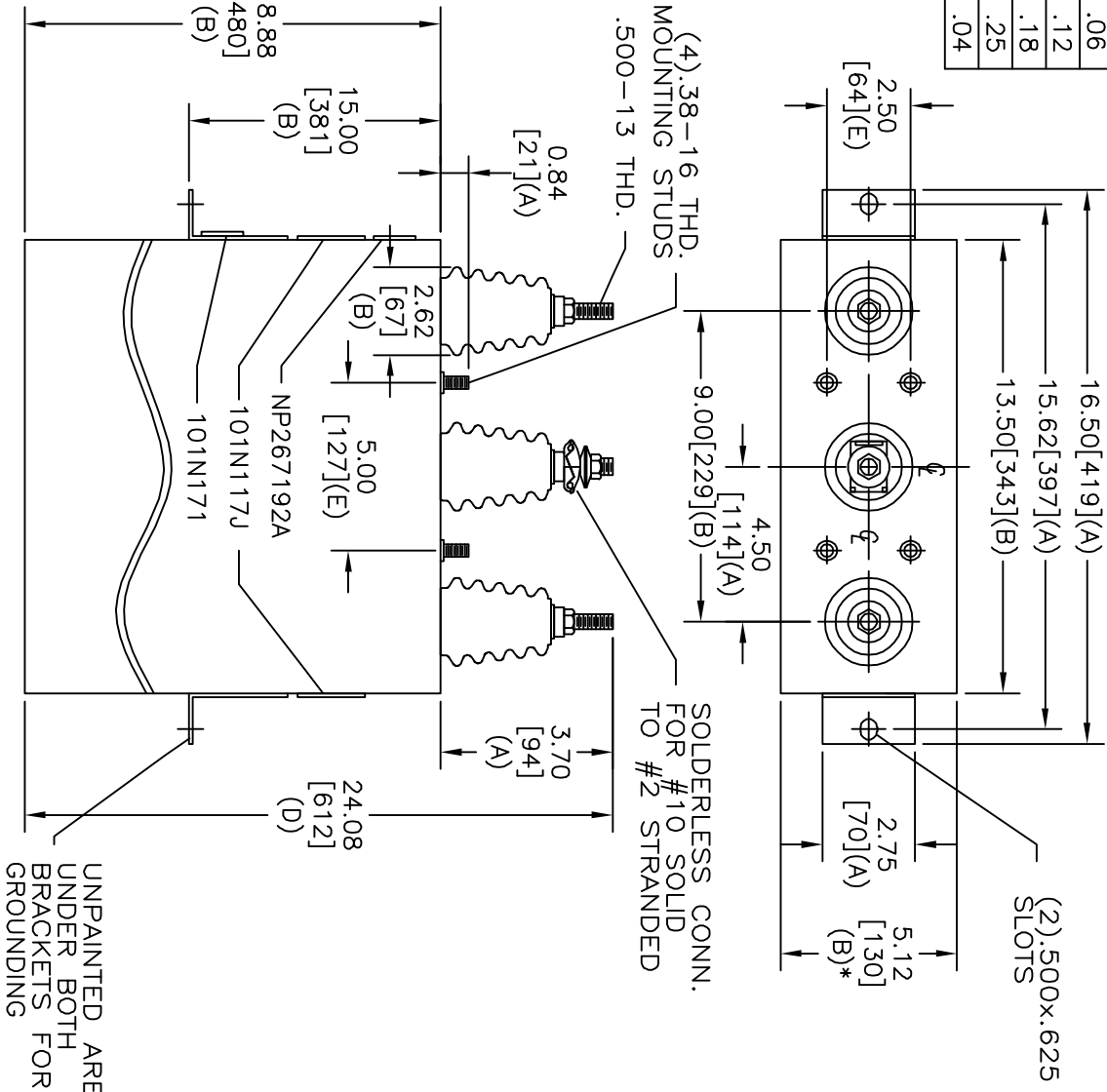


TOL	+/-
A	.06
B	.12
C	.18
D	.25
E	.04

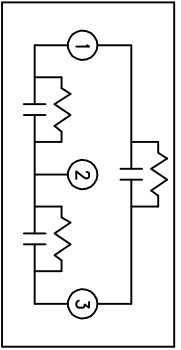


* UP TO +.50 [13] CASE BULGE

MAX. TERMINAL TIGHTENING TORQUE 15 FT-LBS

NP267192A

SIZE	DWG NO	SHT	REV
A	16L0155WS3	2	3
REV	DESCRIPTION	DATE	APPROVED
3	UPDATE CAT. NO. IN NP	11-17-04	McGinn



2400V	3PH	60 KV/BIL
275	KVAR	60 Hz
CAT	16L0155WS3	SN
	1.99 GAL.	
101N171	MFG DATE	
	READ	GEH-2743

INDUSTRIAL SYSTEMS
FORT EDWARD, N.Y., U.S.A.

DRAWN E. McGinn

ISSUED

DATE JUL 9, 1997

DATE 7-9-97

SIZE A

SCALE

OUTLINE
16L0155WS3

SHEET 2 CONT 3

DISTR. TO