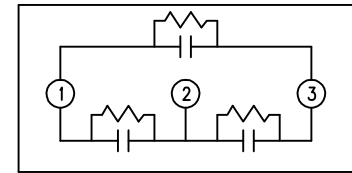
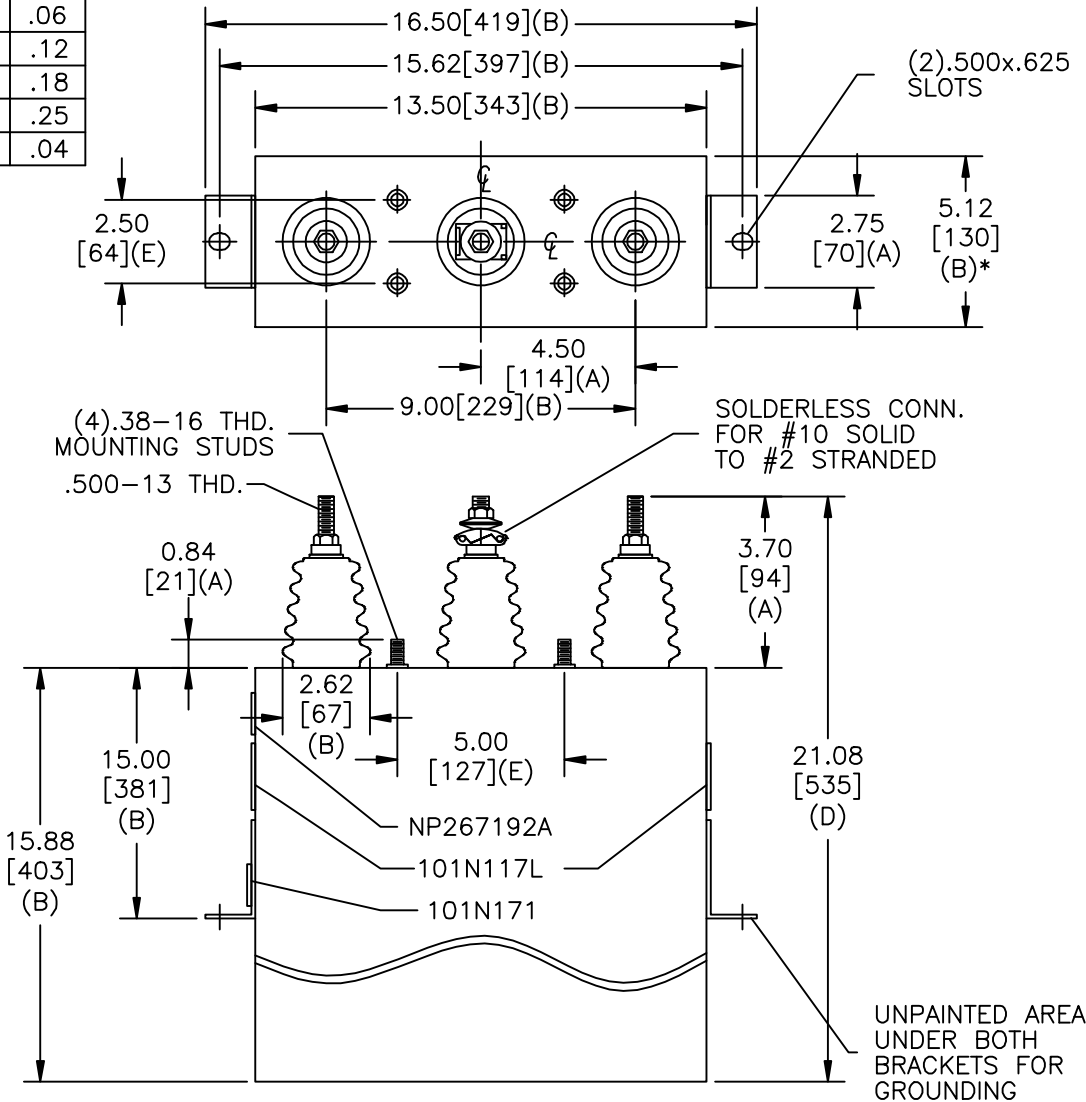


TOL	+/-
A	.06
B	.12
C	.18
D	.25
E	.04

SIZE A	DWG NO 16L0156S3	SHT 2	REV 1
REV 1	DESCRIPTION UPDATE FLUID LABEL	DATE 10/08/2010	APPROVED JBC



SCHEMATIC DIAGRAM - 302

4160V	3PH	60 kVBIL
225	KVAR	60 Hz
CAT	16L0156WS3	SN
	1.72 GAL.	
	MFG DATE	
101N171	READ	GEH-2743

* UP TO +.50 [13] CASE BULGE

MAX. TERMINAL TIGHTENING TORQUE
15 FT-LBS
NP267192A

GE ENERGY FORT EDWARD, N.Y., U.S.A.		SIZE A
DRAWN E. McGinn	DATE 7/8/1997	SCALE
ISSUED	DATE 7/9/1997	

OUTLINE
16L0156WS3

SHEET 2 CONT ON 3

DISTR. TO