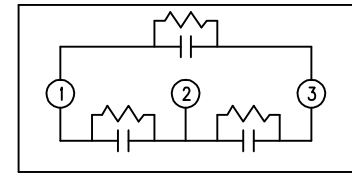
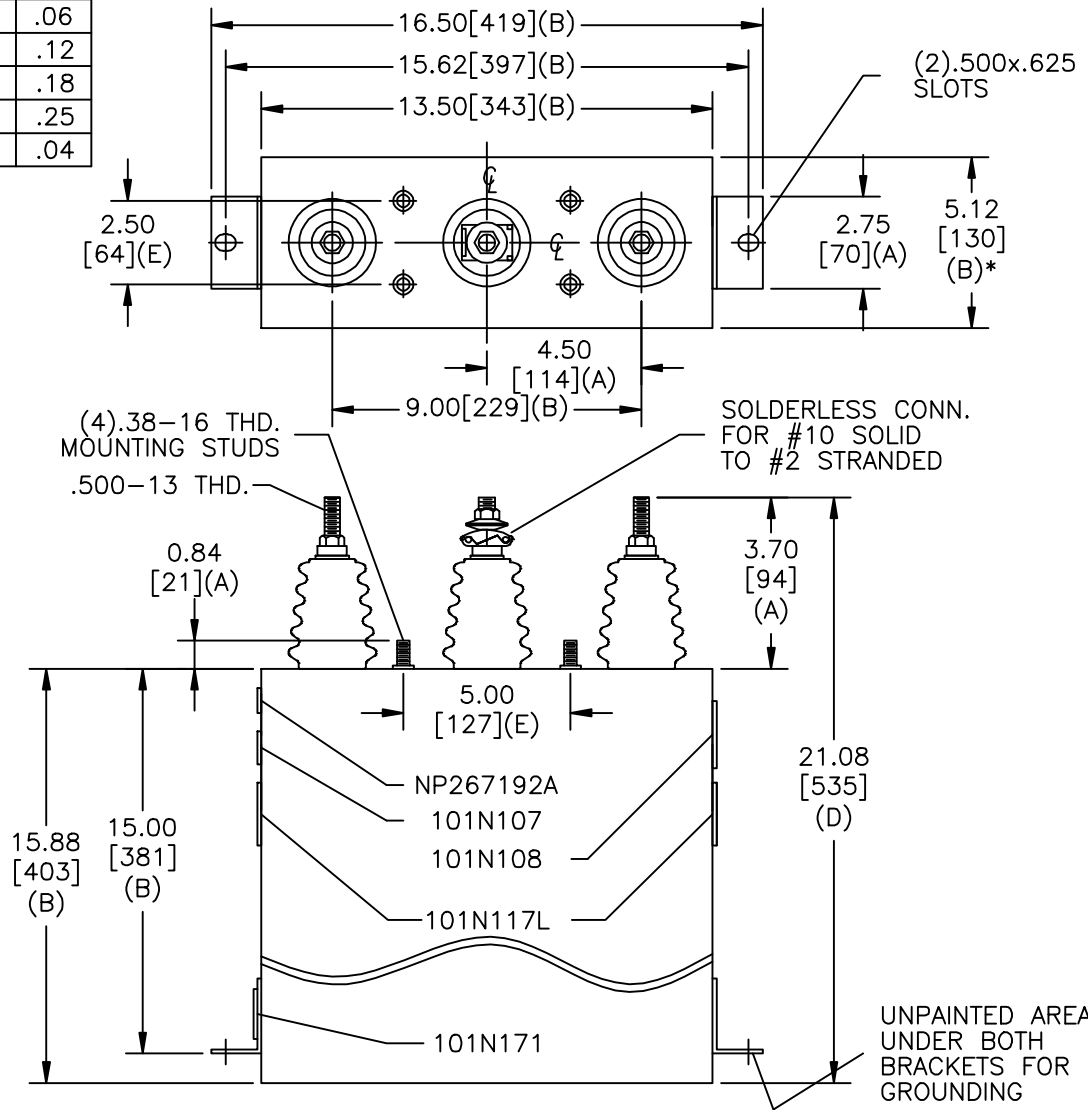


TOL	+/-
A	.06
B	.12
C	.18
D	.25
E	.04

SIZE	DWG NO	SHT	REV
A	16L0156WS3017	2	
REV	DESCRIPTION	DATE	APPROVED



SCHEMATIC DIAGRAM - 302

3300V	3PH	60 kVBIL
118	KVAR	50 Hz
CAT	16L0156WS3017 SN	
	1.72 GAL.	
	MFG DATE	
101N171	READ GEH- 2743	

* UP TO +.50 [13] CASE BULGE

MAX. TERMINAL TIGHTENING TORQUE
15 FT-LBS
NP267192A

GE ENERGY FORT EDWARD, N.Y., U.S.A.		SIZE A
DRAWN JBCozzens	DATE 10/21/2010	SCALE
ISSUED	DATE 10/21/2010	

OUTLINE
16L0156WS3017

SHEET 2 CONT ON 3

DISTR. TO