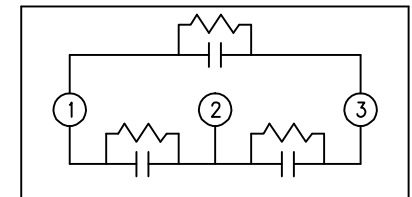
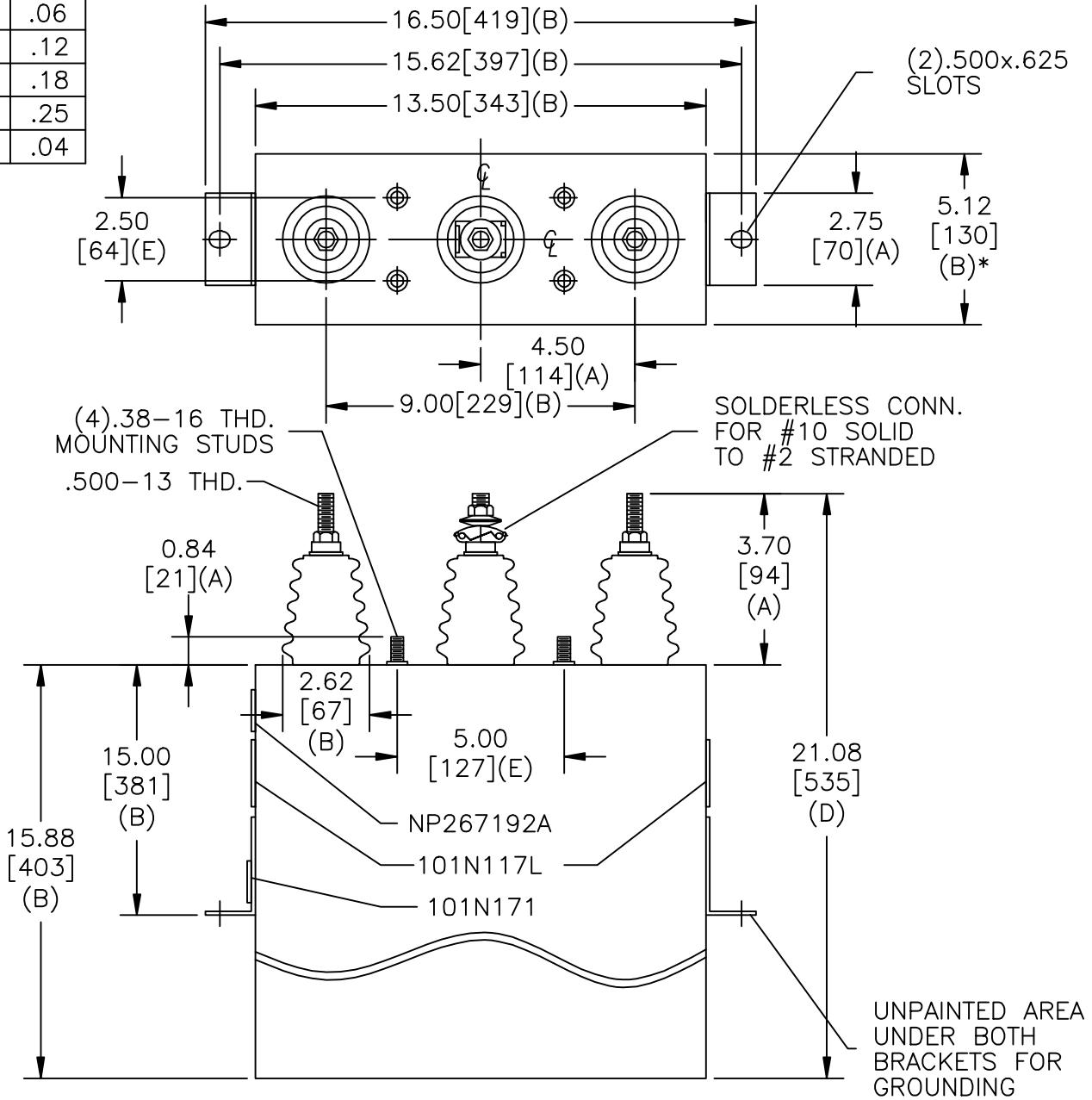


SIZE A	DWG NO 16L0156WS3090	SHT 2	REV
REV	DESCRIPTION	DATE	APPROVED

TOL	+/-
A	.06
B	.12
C	.18
D	.25
E	.04



SCHEMATIC DIAGRAM - 302

4160V                      3PH                      60 kVBIL  
187.5 KVAR                      50 Hz  
CAT 19L0156WS3090 SN  
1.72 GAL.  
MFG DATE  
101N171                      READ GEH- 2743

\* UP TO +.50 [13] CASE BULGE

MAX. TERMINAL TIGHTENING TORQUE  
15 FT-LBS  
NP267192A

<b>GE ENERGY</b> FORT EDWARD, N.Y., U.S.A.	SIZE A	<b>OUTLINE</b> <b>16L0156WS3090</b>	SHEET 2    CONT ON 3
	DRAWN B.Ross    DATE 5/6/2008 ISSUED            DATE 5/6/2008		

DISTR. TO