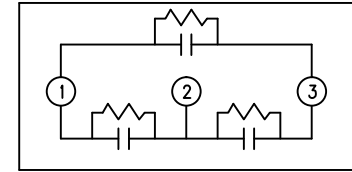
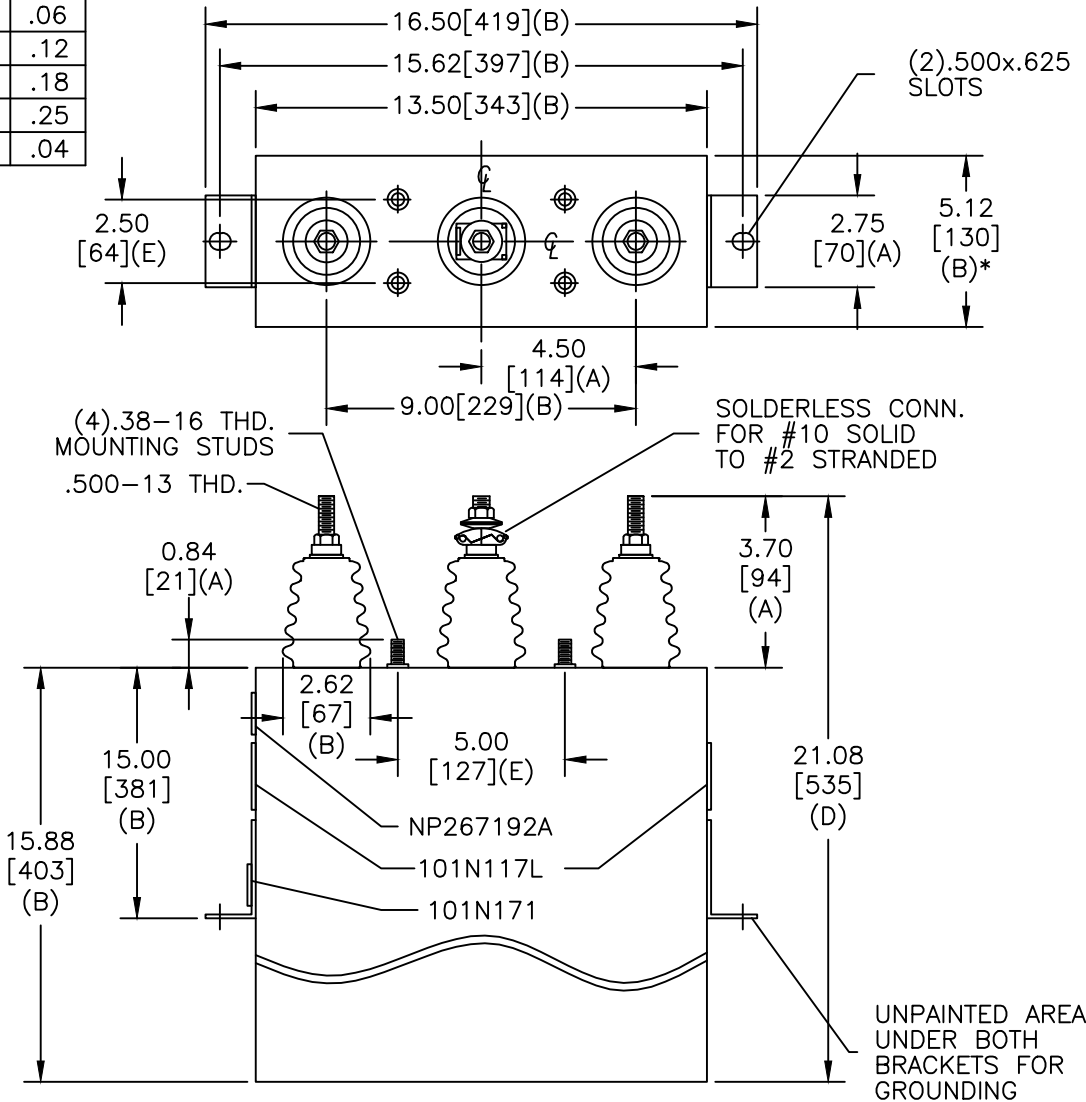


TOL	+/-
A	.06
B	.12
C	.18
D	.25
E	.04

SIZE	DWG NO	SHT	REV
A	16L0157S3	2	4
REV	DESCRIPTION	DATE	APPROVED
4	117L WAS J	9/22/2009	BTR



SCHEMATIC DIAGRAM - 302

4160V	3PH	60 kVBIL
250 KVAR	60 Hz	
CAT 16L0157WS3	SN	
	1.67 GAL.	
	MFG DATE	
101N171	READ GEH-2743	

* UP TO +.50 [13] CASE BULGE

MAX. TERMINAL TIGHTENING TORQUE
15 FT-LBS

NP267192A

GE ENERGY FORT EDWARD, N.Y., U.S.A.		SIZE A
DRAWN E. McGinn	DATE 7/8/1997	SCALE
ISSUED	DATE 7/9/1997	

OUTLINE
16L0157WS3

SHEET 2 CONT ON 3

DISTR. TO