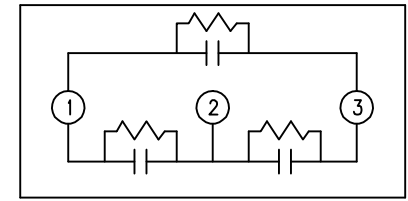
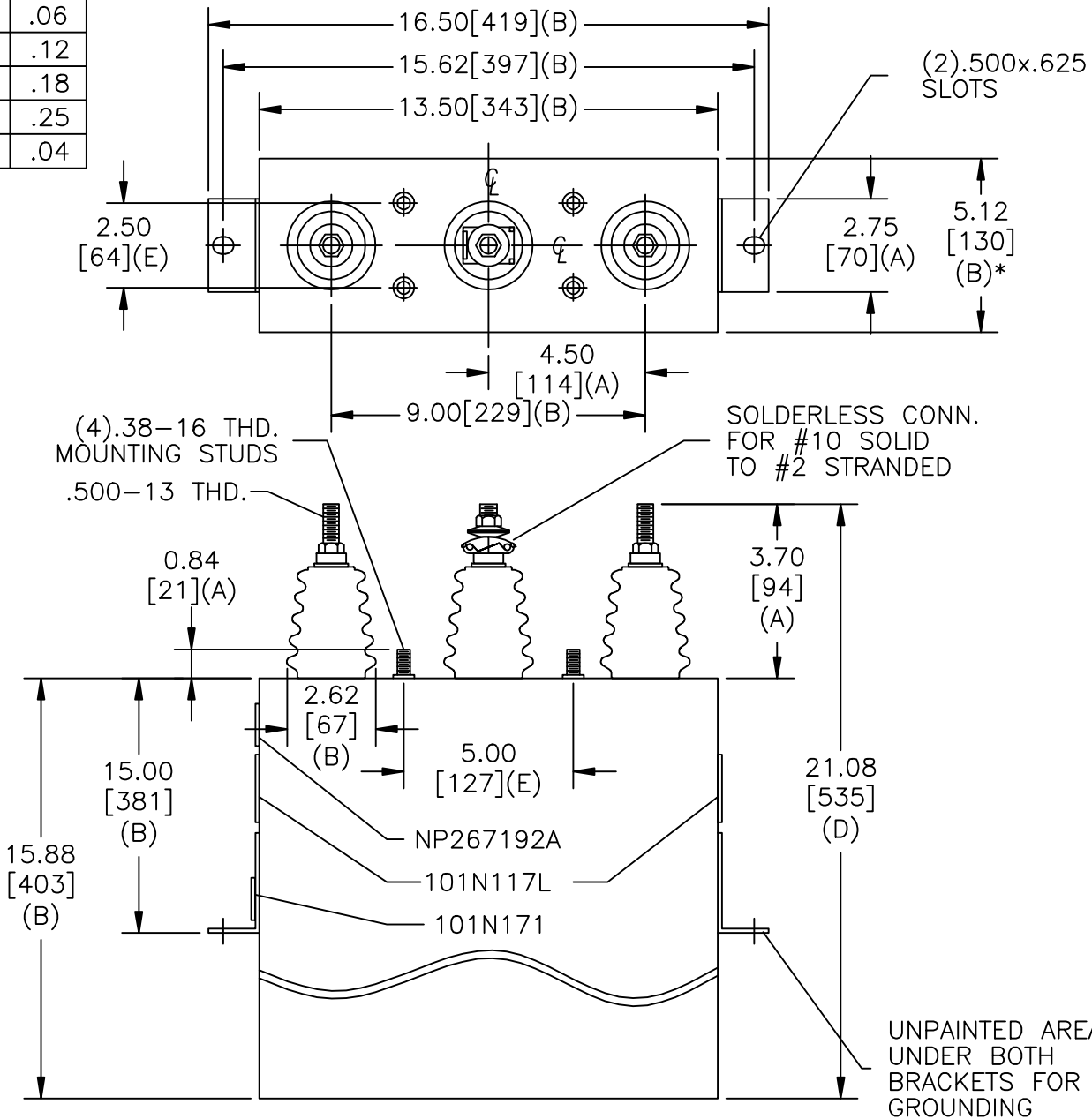


SIZE A	DWG NO 16L0157WS3017	SHT 2	REV
REV	DESCRIPTION	DATE	APPROVED
			BTR

TOL	+/-
A	.06
B	.12
C	.18
D	.25
E	.04



SCHEMATIC DIAGRAM - 302

3300V 3PH 60 kVBIL
 118 KVAR 50 Hz
 CAT 16L0157WS3017 SN
 1.67 GAL.
 MFG DATE
 101N171 READ GEH- 2743

* UP TO +.50[13] CASE BULGE

MAX. TERMINAL TIGHTENING TORQUE 15 FT-LBS
 NP267192A

GE ENERGY FORT EDWARD, N.Y., U.S.A.		SIZE A
DRAWN	B.Ross	DATE 9/27/2010
ISSUED		DATE 9/27/2010

<h1>OUTLINE</h1> <h2>16L0157WS3017</h2>		SHEET 2	CONT ON 3
---	--	---------	-----------

DISTR. TO