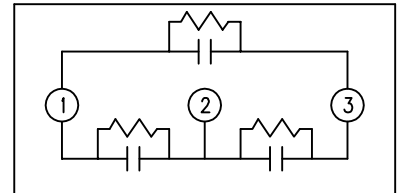
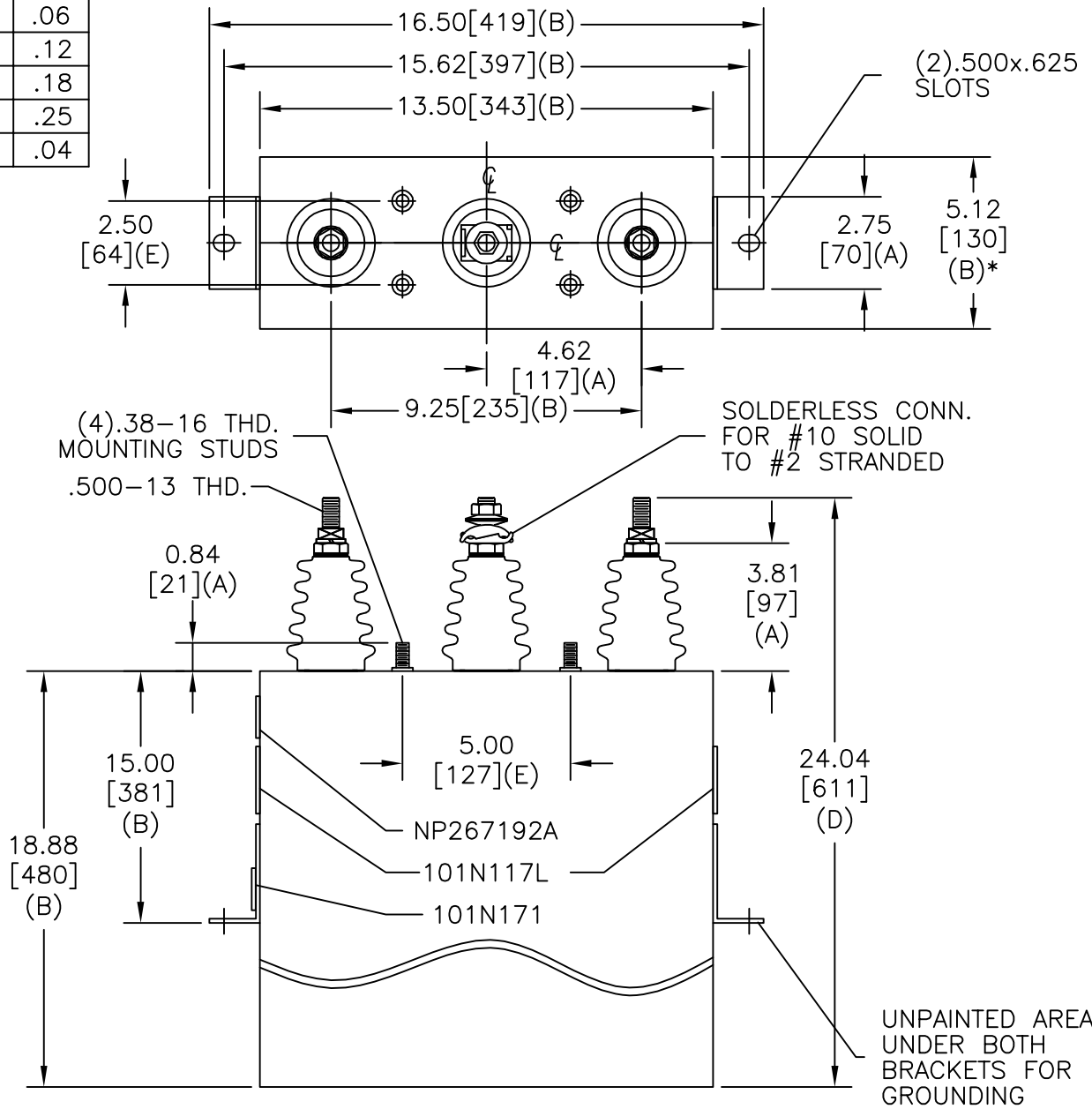


SIZE A	DWG NO 16L0159WS3	SHT 2	REV 6
REV 6	DESCRIPTION NP WAS 19L0159WS3	DATE 10/15/2013	APPROVED BTR

TOL	+/-
A	.06
B	.12
C	.18
D	.25
E	.04



SCHEMATIC DIAGRAM - 302

4160V	3PH	60 kVBIL
300	KVAR	60 Hz
CAT	16L0159WS3	SN
	1.96 GAL.	
	MFG DATE	
101N171	READ	GEH- 2743

MAX. TERMINAL  
TIGHTENING TORQUE  
15 FT-LBS  
NP267192A

<b>GE ENERGY</b> FORT EDWARD, N.Y., U.S.A.		SIZE A
DRAWN	E. McGinn	DATE 7/9/1997
ISSUED		DATE 7/27/1997
SCALE		

**OUTLINE**  
**16L0159WS3**

SHEET 2 CONT ON 3

DISTR. TO