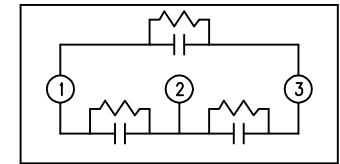
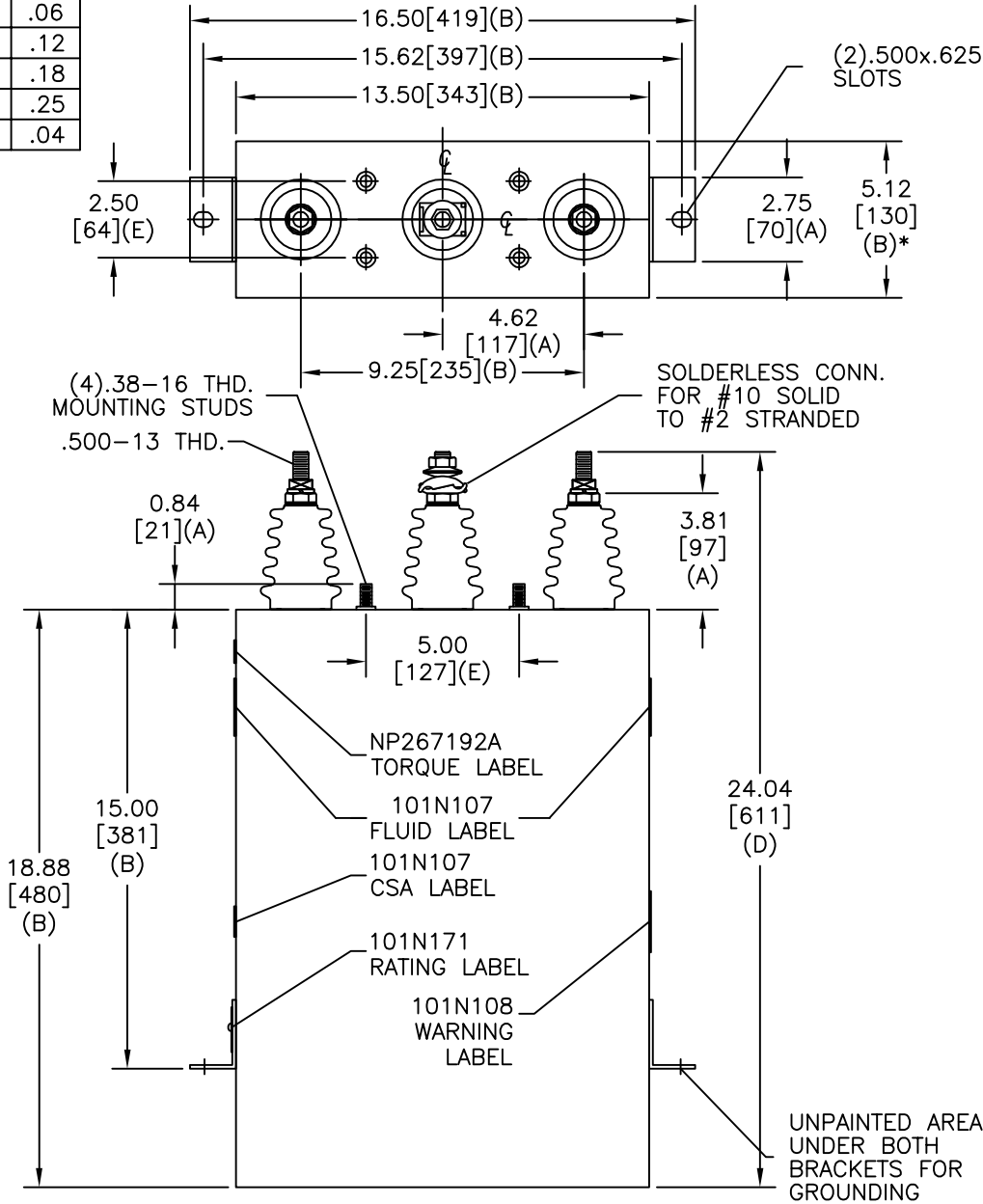


SIZE A	DWG NO 16L0159WS3037	SHT 2	REV
REV	DESCRIPTION	DATE	APPROVED

TOL	+/-
A	.06
B	.12
C	.18
D	.25
E	.04



SCHEMATIC DIAGRAM - 302

4160V	3PH	60 kVBIL
300	KVAR	60 Hz
CAT	16L0159WS3037	SN
	1.96 GAL.	
	MFG DATE	
101N171	READ	GEH-2743

* UP TO +.50 [13] CASE BULGE

MAX. TERMINAL TIGHTENING TORQUE 15 FT-LBS

NP267192A

	GE ENERGY FORT EDWARD, N.Y., U.S.A.		SIZE A	OUTLINE 16L0159WS3037
	DRAWN B. Ross	DATE 10/15/2013		
ISSUED	DATE 10/15/2013	SHEET 2	CONT ON 3	DISTR. TO