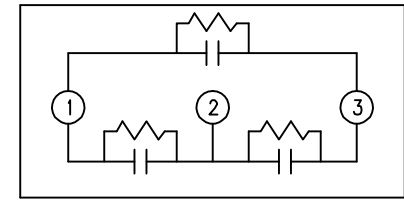
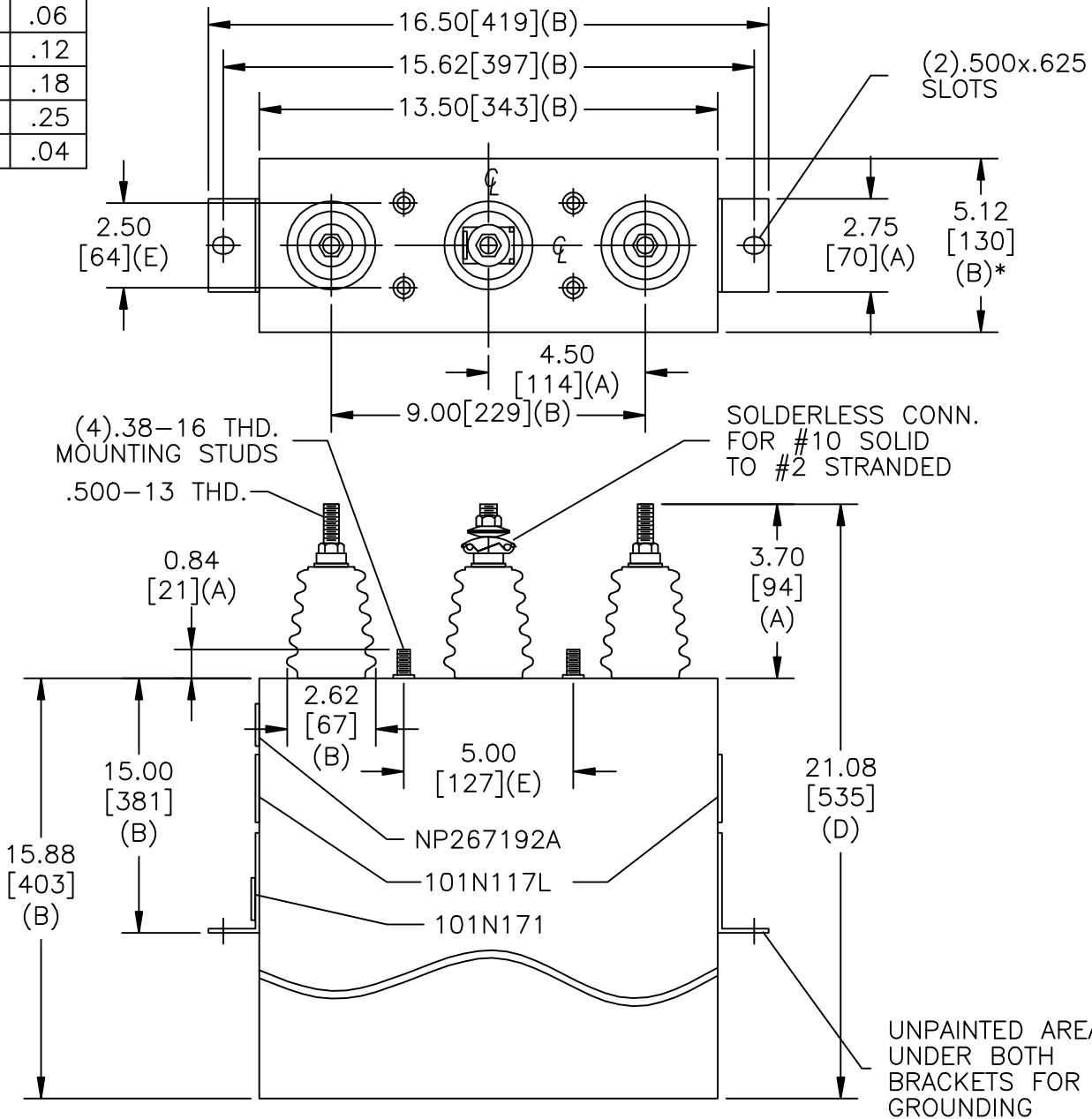


SIZE A	DWG NO 16L0160WS3	SHT 2	REV 4
REV 4	DESCRIPTION CORRECT ITEM IN NP	DATE 7/20/2010	APPROVED BTR

TOL	+/-
A	.06
B	.12
C	.18
D	.25
E	.04



SCHEMATIC DIAGRAM - 302

4800V	3PH	60 kVBIL
225	KVAR	60 Hz
CAT	16L0160WS3	SN
	1.72 GAL.	
	MFG DATE	
101N171	READ GEH- 2743	

MAX. TERMINAL
TIGHTENING TORQUE
15 FT-LBS

NP267192A

GE ENERGY FORT EDWARD, N.Y., U.S.A.		SIZE A
DRAWN	E. McGinn	DATE 7/8/1997
ISSUED		DATE 7/9/1997

OUTLINE
16L0160WS3

SHEET 2 CONT ON 3

DISTR. TO