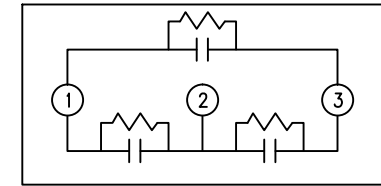
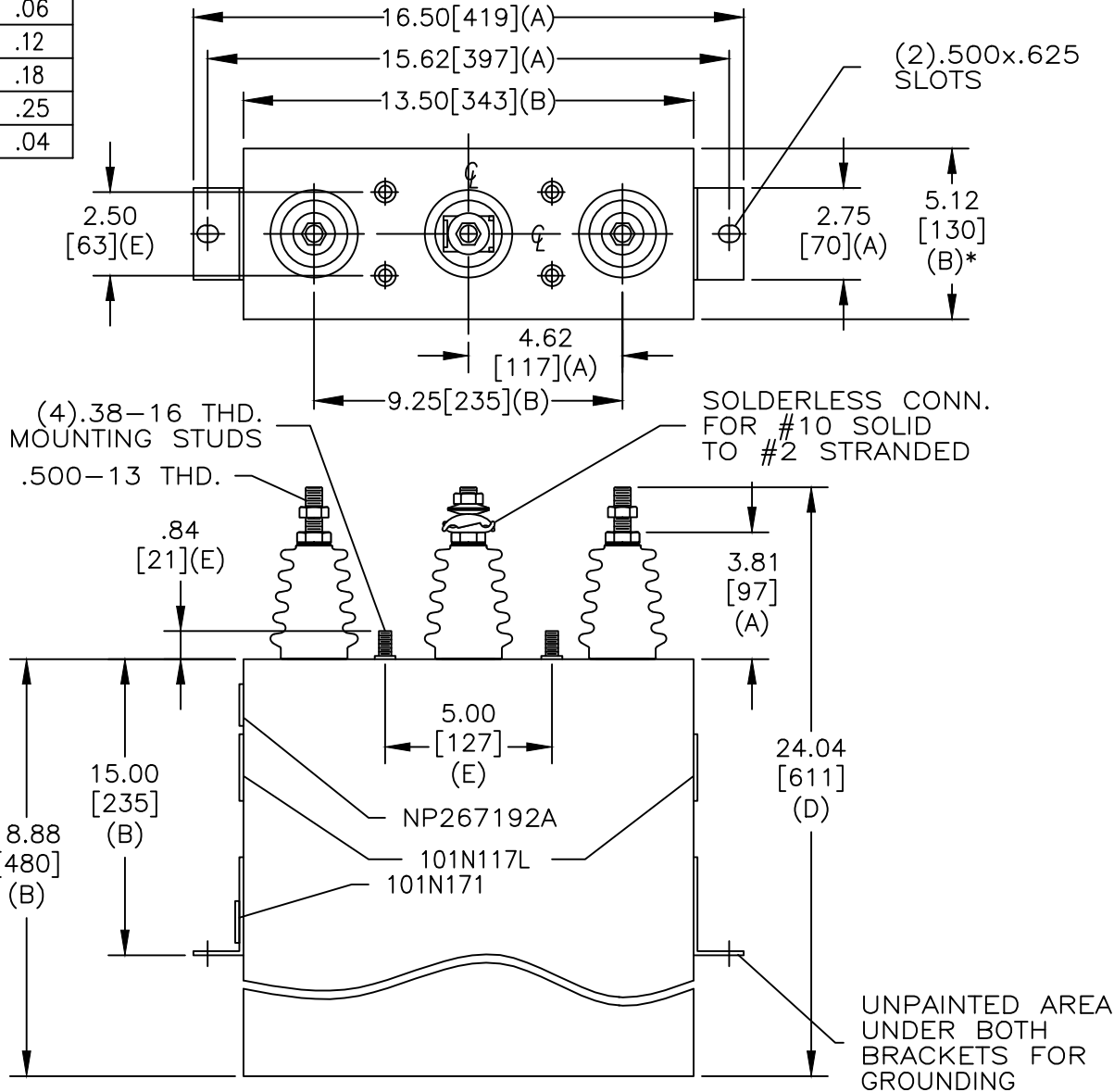


TOL	+/-
A	.06
B	.12
C	.18
D	.25
E	.04

SIZE A	DWG NO 16L0163WS3	SHT 2	REV 3
REV 3	DESCRIPTION UPDATE BUSH & FLUID LBL	DATE 9/16/2013	APPROVED JBC



SCHEMATIC DIAGRAM - 302

4800 V 3 PH 60 kVBIL
 300 KVAR 60 Hz
 CAT 16L0163WS3 SN
 1.92 GAL.
 MFG DATE
 101N171 READ GEH- 2743

* UP TO +.50 [13] CASE BULGE

MAX. TERMINAL TIGHTENING TORQUE 15 FT-LBS

NP267192A

GE ENERGY FORT EDWARD, N.Y., U.S.A.		SIZE A
DRAWN	E. McGinn	DATE 11/8/1997
ISSUED		DATE 11/9/1997

OUTLINE 16L0163WS3		SHEET 2	CONT ON 3
-----------------------	--	---------	-----------

DISTR. TO