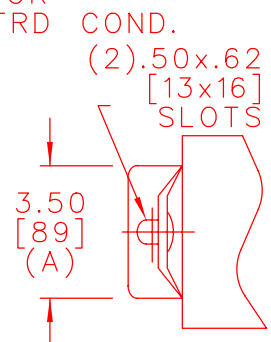
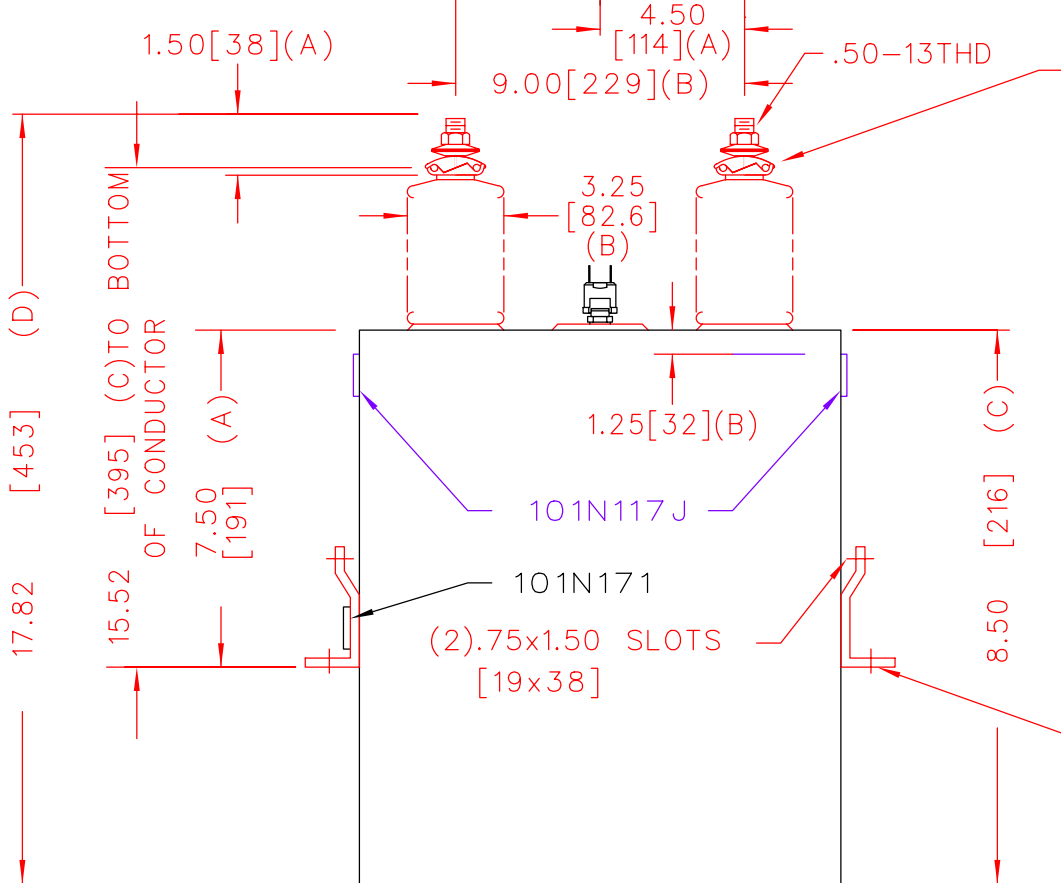


\* UP TO +.50 CASE BULGE



| TOL | in. |
|-----|-----|
| A   | .06 |
| B   | .12 |
| C   | .18 |
| D   | .25 |

|                 |      |          |
|-----------------|------|----------|
| 3300 V          | 1 Ph | 95 kVBIL |
| 31.5 kVAR       |      | 60 Hz    |
| CAT. 16L0170WH4 |      |          |
| 1.2 GAL.        |      |          |
| MFG DATE        |      |          |
| 101N171         | READ | GEH-2743 |

UNPAINTED AREA UNDER BOTH BRKTS FOR GROUNDING