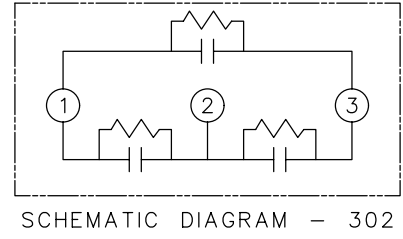
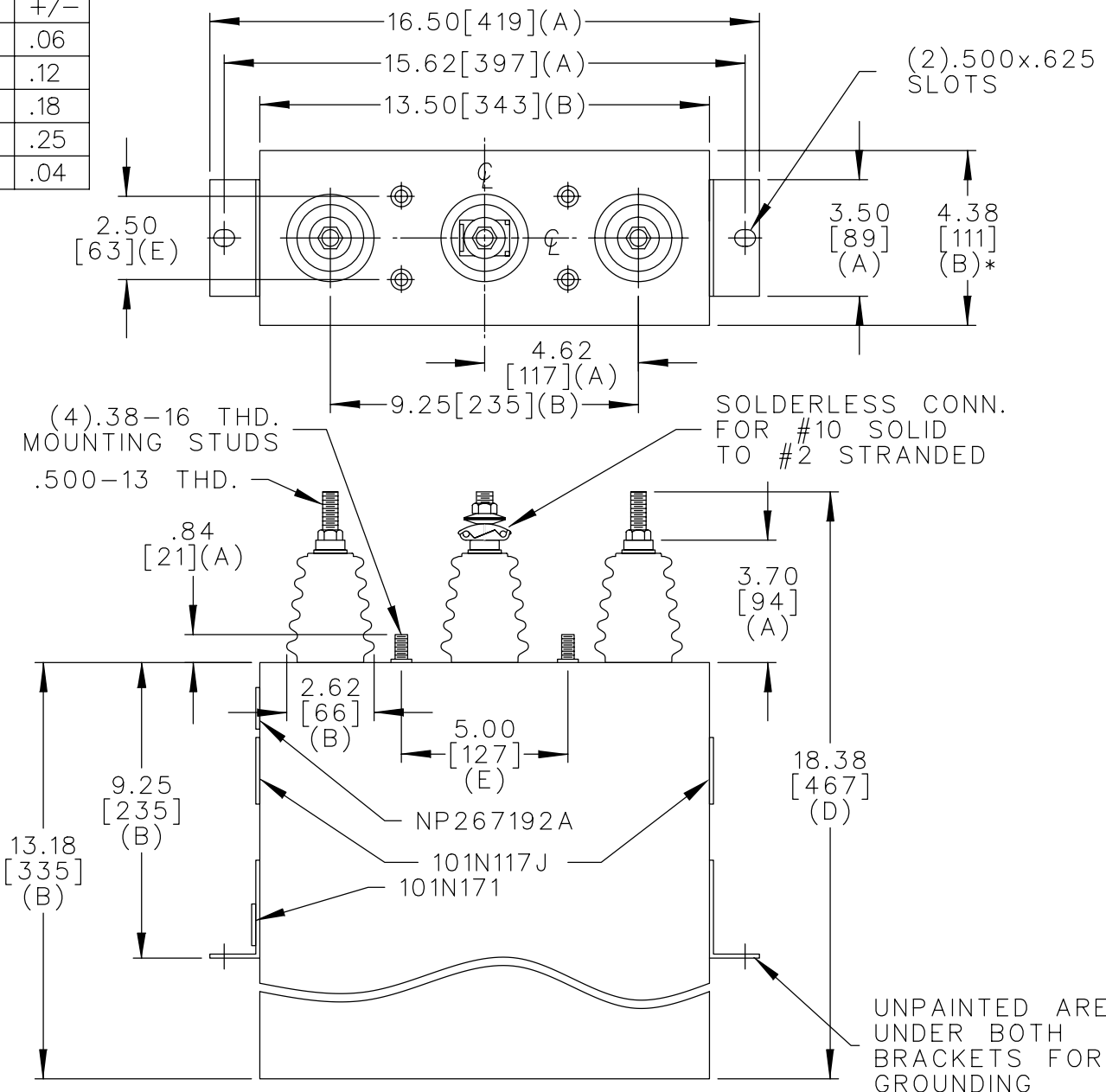


TOL	+/-
A	.06
B	.12
C	.18
D	.25
E	.04

SIZE	DWG NO.	SH	REV
A	16L0174WH3	2	
REV	McGINN UPDATE CAT NO		
1			



1200V 3PH
 100KVAR 60HZ 60KVBIL
 CAT. 16L0174WH3 NO.
 1.25 GAL. MFG DATE
 GEH-2743

101N171

MAX. TERMINAL
 TIGHTENING TORQUE
 15 FT-LBS

NP267192A

	CAPACITOR & POWER PROTECTION FORT EDWARD, N.Y., U.S.A.		SIZE	FSCM NO	A	OUTLINE 16L0174WH3	SHEET 2	CONT 3
	DRAWN	E.McGINN	SEPT. 16, 1997	SCALE				
ISSUED	9-24-97							

DISTR TO