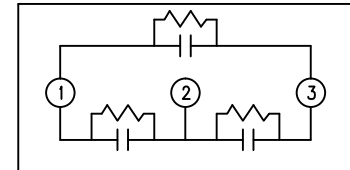
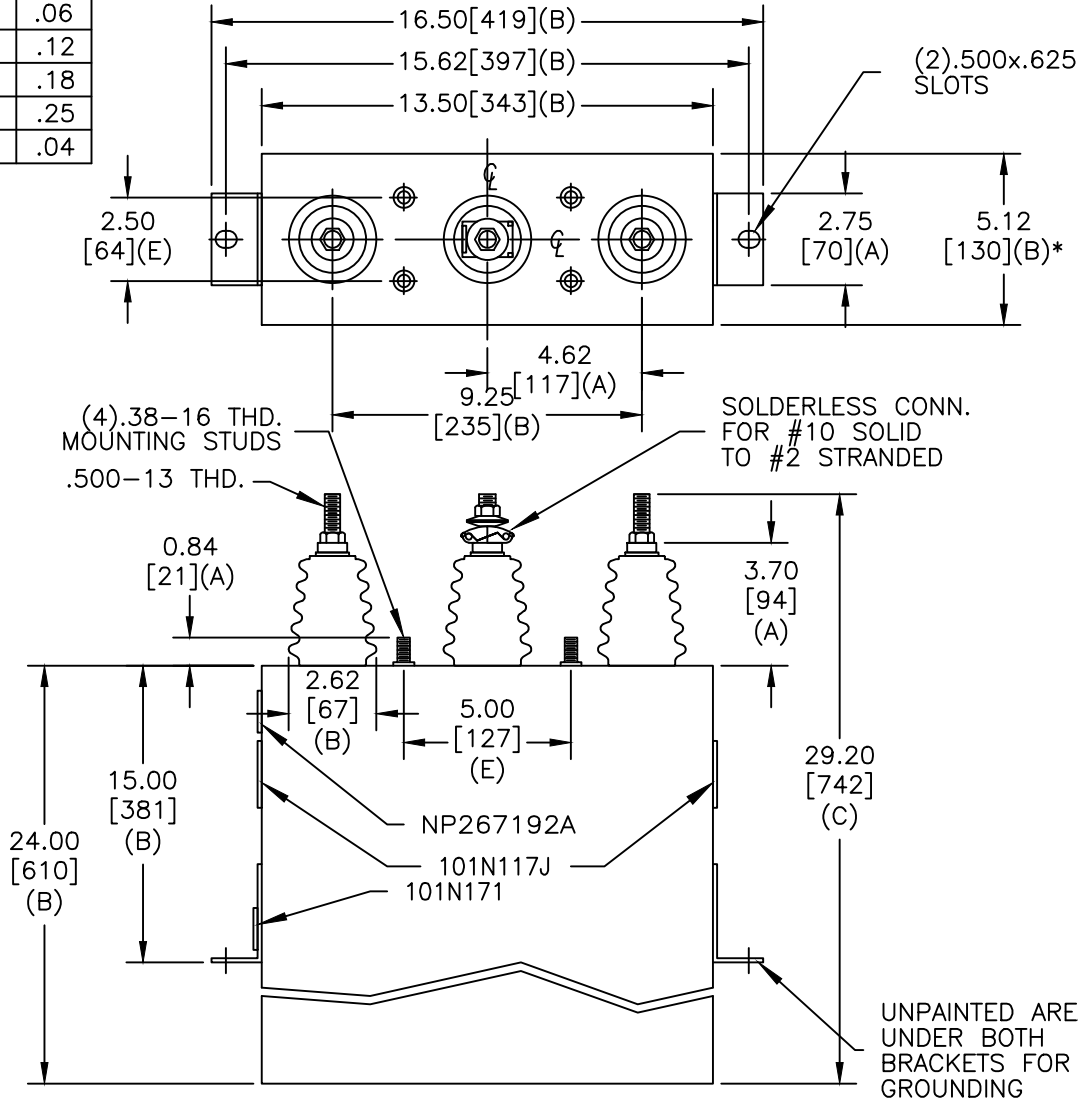


TOL	+/-
A	.06
B	.12
C	.18
D	.25
E	.04

SIZE A	DWG NO 16L0175WH3	SHT 2	REV 3
REV 3	DESCRIPTION UPDATE NP	DATE 4/27/11	APPROVED DMR



SCHEMATIC DIAGRAM - 302

1200 V 3 PH KVBIL
 250 KVAR 60 Hz
 CAT 16L0175WH3 SN
 2.2 GAL.
 MFG DATE
 101N171 READ GEH- 2743

* UP TO +.50 [13] CASE BULGE

MAX. TERMINAL TIGHTENING TORQUE 15 FT-LBS

NP267192A

GE ENERGY FORT EDWARD, N.Y., U.S.A.		SIZE A
DRAWN E. McGinn	DATE 1/16/1997	SCALE
ISSUED	DATE 7/9/1997	

OUTLINE 16L0175WH3	
SHEET 2	CONT ON 3

DISTR. TO