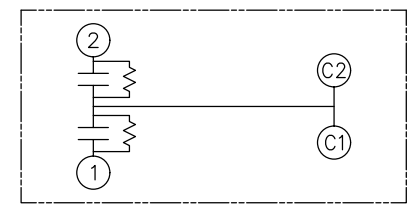
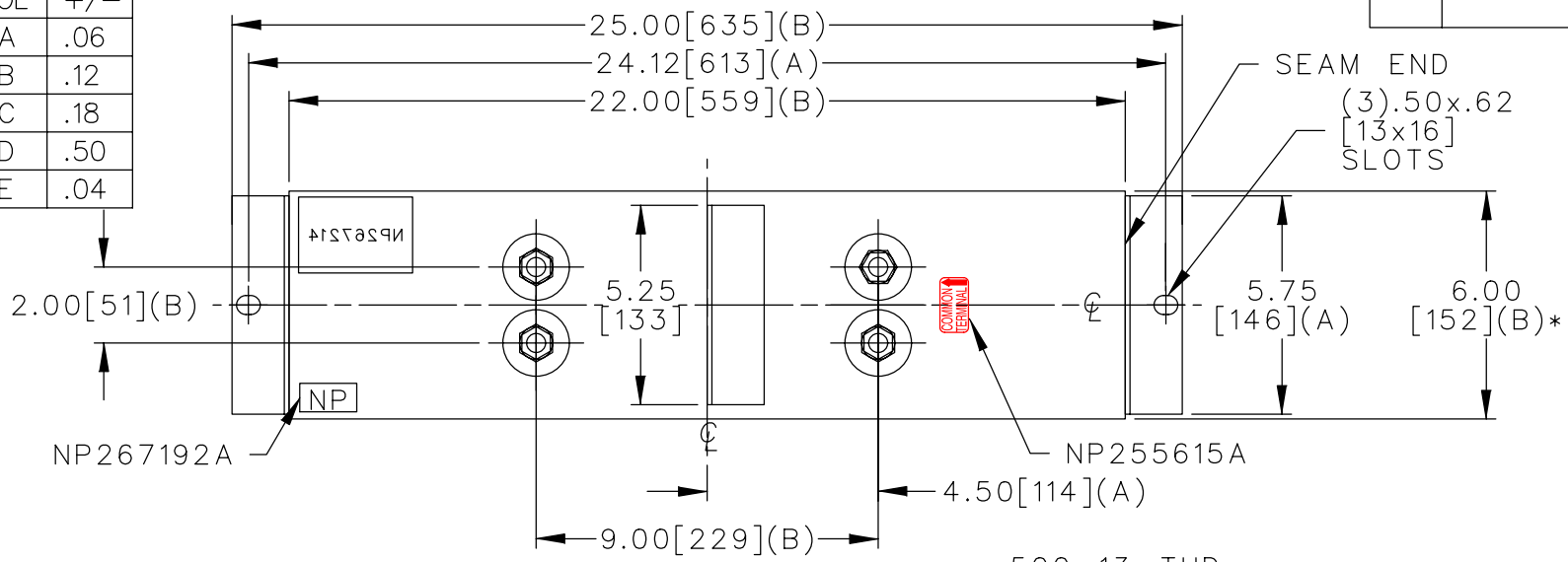
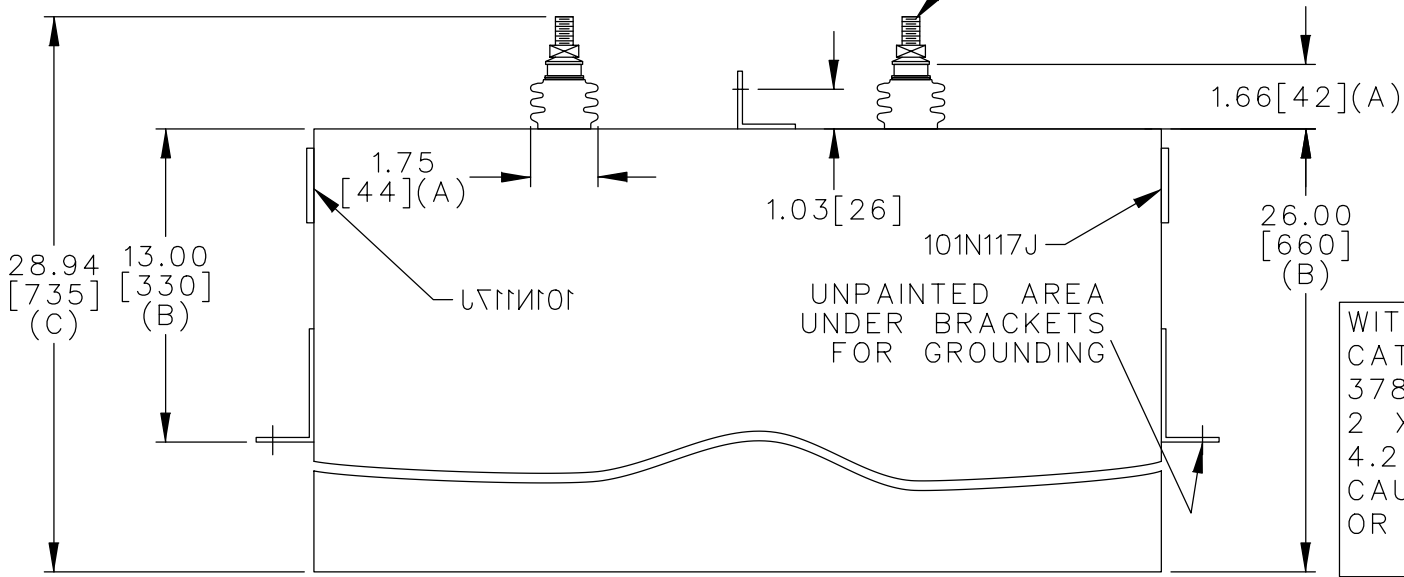


|     |     |
|-----|-----|
| TOL | +/- |
| A   | .06 |
| B   | .12 |
| C   | .18 |
| D   | .50 |
| E   | .04 |



SCHEMATIC DIAGRAM - 207



WITH INTERNAL DISCH RESISTORS  
 CAT. 16L0185WH3 SN  
 378 KVAR 1000V 60 HZ 1PH  
 2 X 189 KVAR/TAP  
 4.2 GAL. COMBUSTIBLE LIQUID  
 CAUTION! BEFORE INSTALLING  
 OR OPERATING READ GEH-2743

\* UP TO +.75 [19]  
 CASE BULGE

MAX. TERMINAL  
 TIGHTENING TORQUE  
 15 FT-LBS

NP267192A

|  |   |               |                  |                     |                                     |                          |
|--|---|---------------|------------------|---------------------|-------------------------------------|--------------------------|
|  | CAPACITOR & POWER PROTECTION<br>FORT EDWARD, N.Y., U.S.A. |               | SIZE<br><b>A</b> | EST. WT.<br>189 LB. | <b>OUTLINE</b><br><b>16L0185WH3</b> | SHEET 2 CONT. 3<br>ON ON |
|  | DRAWN E. MCGINN   | OCT. 13, 1998 | SCALE            | DISTR TO            |                                     |                          |