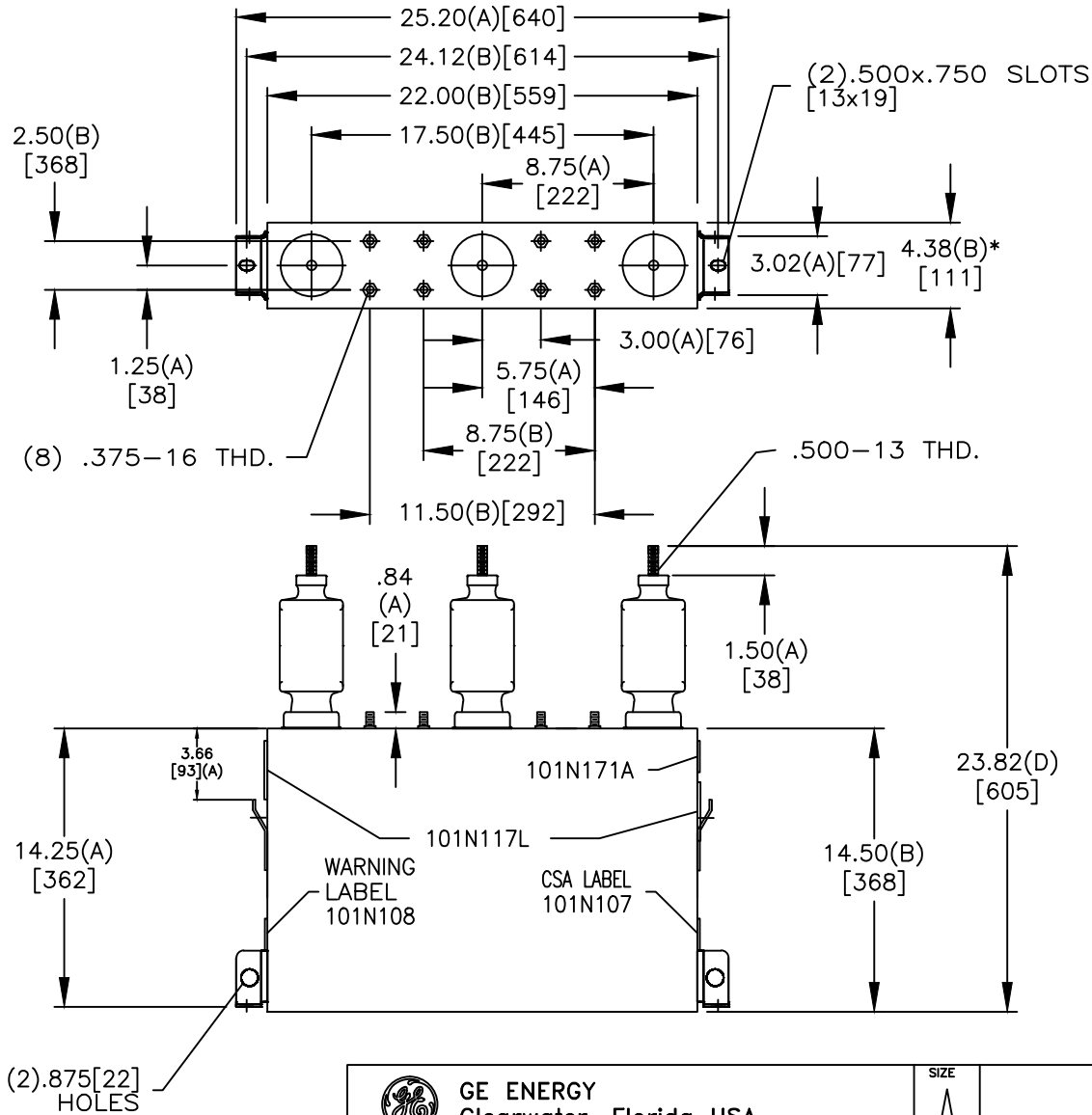
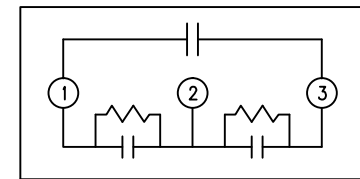


SIZE A	DWG NO 16L0186WH3	SHT 2	REV 1
REV 1	DESCRIPTION New Case	DATE 1/9/2019	APPROVED LV



TOL	+/-
A	.06
B	.12
C	.18
D	.25

* UP TO +.50 CASE BULGE



SCHEMATIC DIAGRAM - 304

Capacitor
With Dielektrol Fluid
With Internal Discharge Resistors

Volt. 6600 PH 3 kVBIL
kVar 150 Hz 60 Mea.
Cat. 16L0186WH3 SN.
DELTA CONNECTION

Contains 2.2 Gal. Combustible Liquid with less than one part per million PCB on MFG date:
CAUTION! Before installing or operating Read GEH- 2743

101N171A Clearwater, Florida USA

GE ENERGY Clearwater, Florida USA		SIZE A
DRAWN JBC	DATE 12/02/2015	SCALE
ISSUED	DATE 12/02/2015	

OUTLINE
16L0186WH3

SHEET 2 CONT ON 3

DISTR. TO