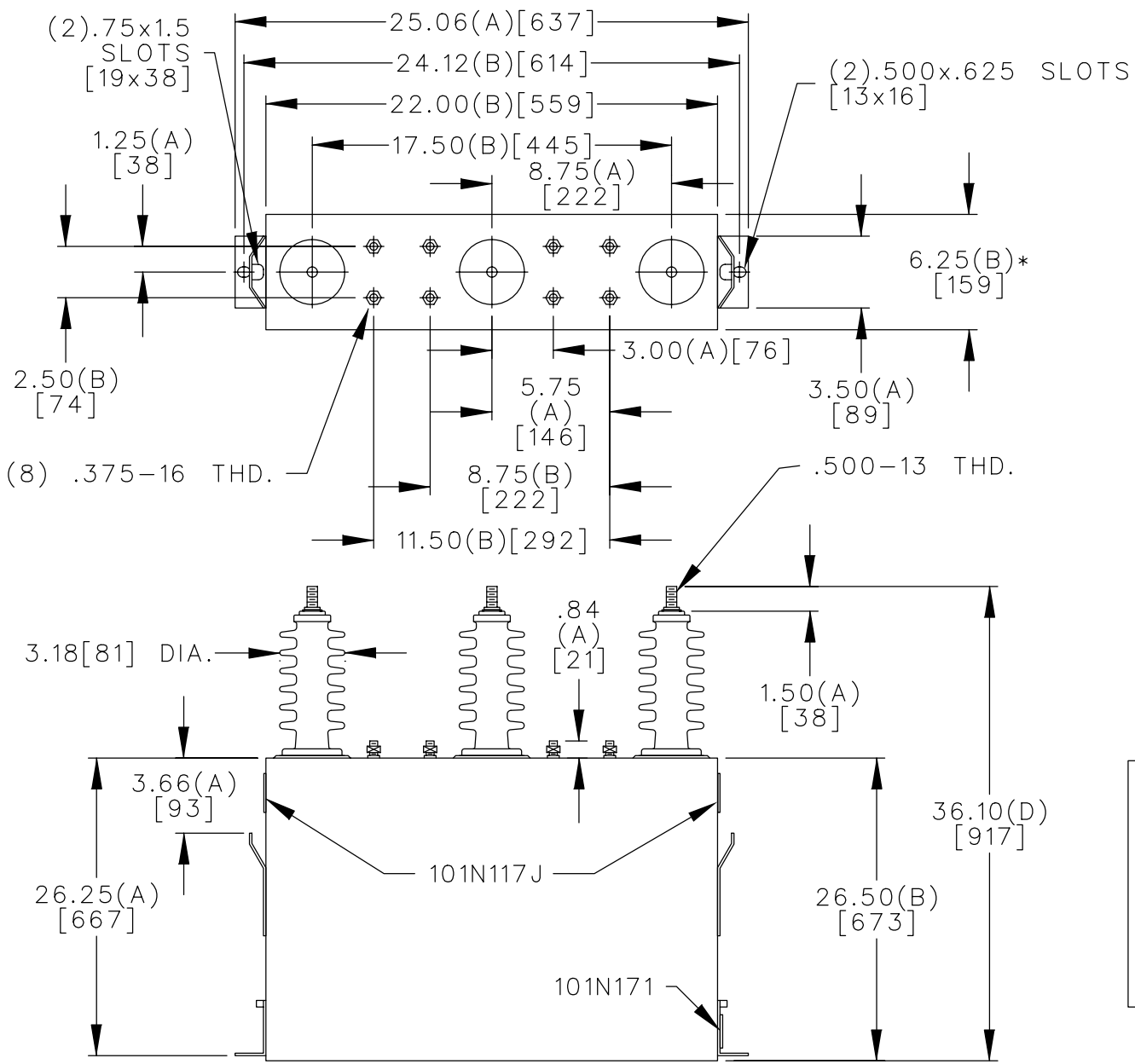
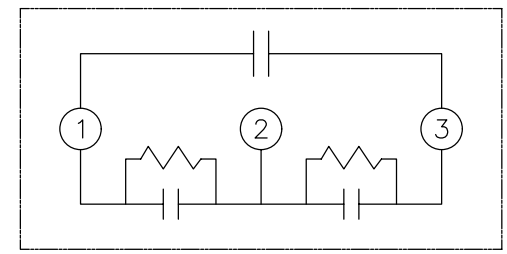


SIZE A	DWG NO. 16L0196WH3	SH 2	REV
REV 1	McGINN UPDATE CAT NO		



TOL	+/-
A	.06
B	.12
C	.18
D	.25

* UP TO +.75 CASE BULGE



6600 VOLTS 3 PH KVBIL
 400 KVAR 60 HZ
 CAT. 16L0196WH3
 4.9 GALS.
 MFG DATE
 101N171 READ GEH-2743

	CAPACITOR & POWER PROTECTION FORT EDWARD, N.Y., U.S.A.		SIZE A	FSCM NO EST.WT. 205/93 LB/KG	OUTLINE 16L0196WH3	DISTR TO
	DRAWN E.McGINN	NOV. 17, 1998	SCALE	SHEET 2 CONT ON 3		
ISSUED	11-18-98					