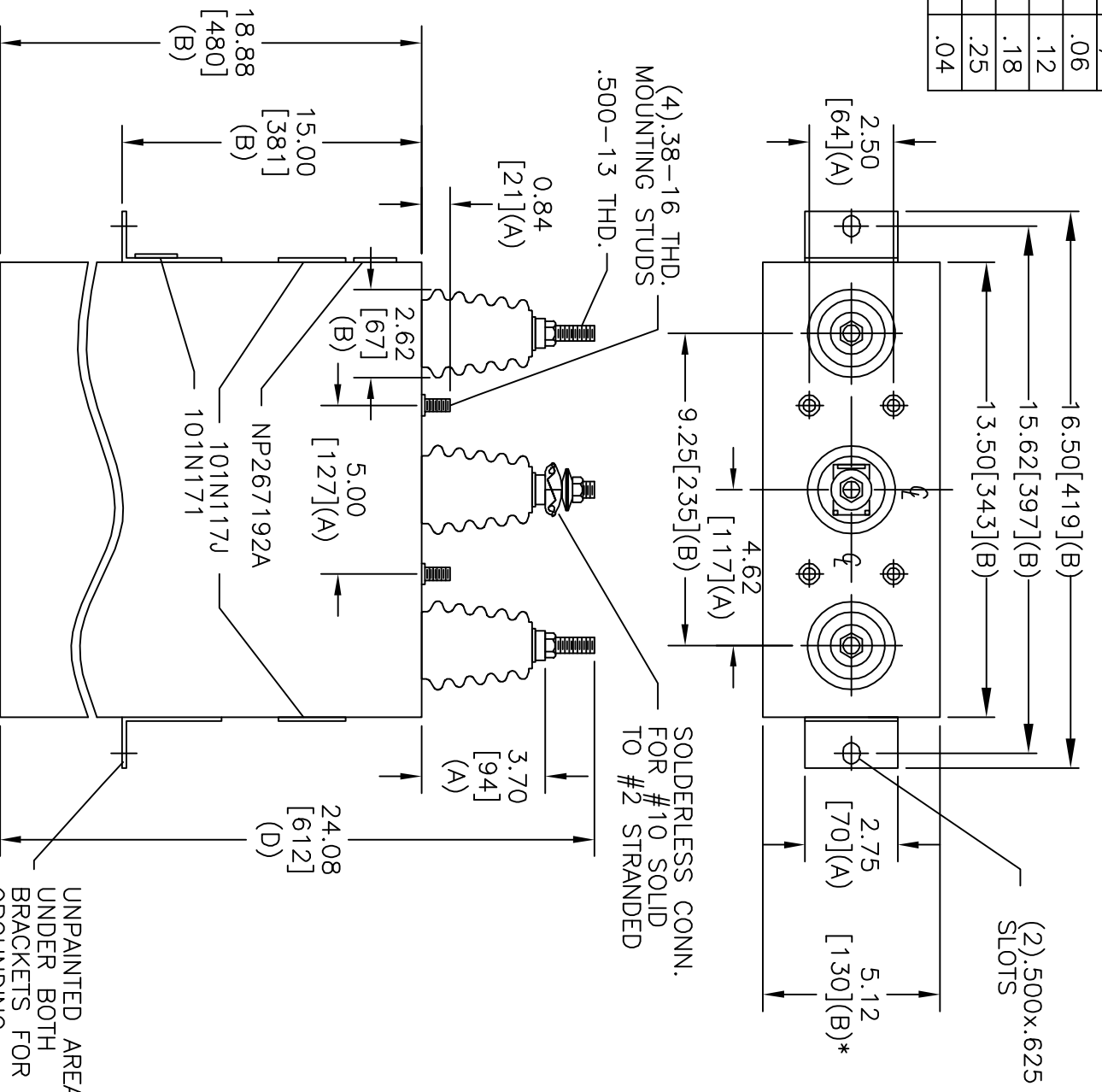


TOL	+/-
A	.06
B	.12
C	.18
D	.25
E	.04

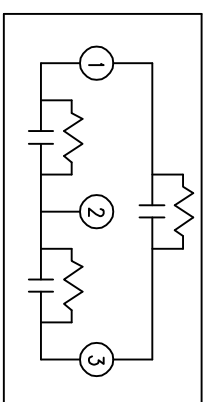


(2) .500x.625 SLOTS

SOLDERLESS CONN. FOR #10 SOLID TO #2 STRANDED

UNPAINTED AREA UNDER BOTH BRACKETS FOR GROUNDING

SIZE	DWG NO	SHT	REV
A	16L0199WH3	2	
REV	DESCRIPTION	DATE	APPROVED



3300V	3 PH	60 KVBL
190	KVAR	50 Hz
CAT	16L0199WH3	SN
	1.8 GAL.	
101N171	MFG DATE	READ GEH-2743

* UP TO +.50 [13] CASE BULGE

MAX. TERMINAL TIGHTENING TORQUE 15 FT-LBS

NP267192A

INDUSTRIAL SYSTEMS FORT EDWARD, N.Y., U.S.A.	
DRAWN	E. McGinn
ISSUED	
DATE	NOV 24, 1998

SIZE	A
SCALE	
<h1>OUTLINE</h1> <h2>16L0199WH3</h2>	
SHEET	2
CONT	3