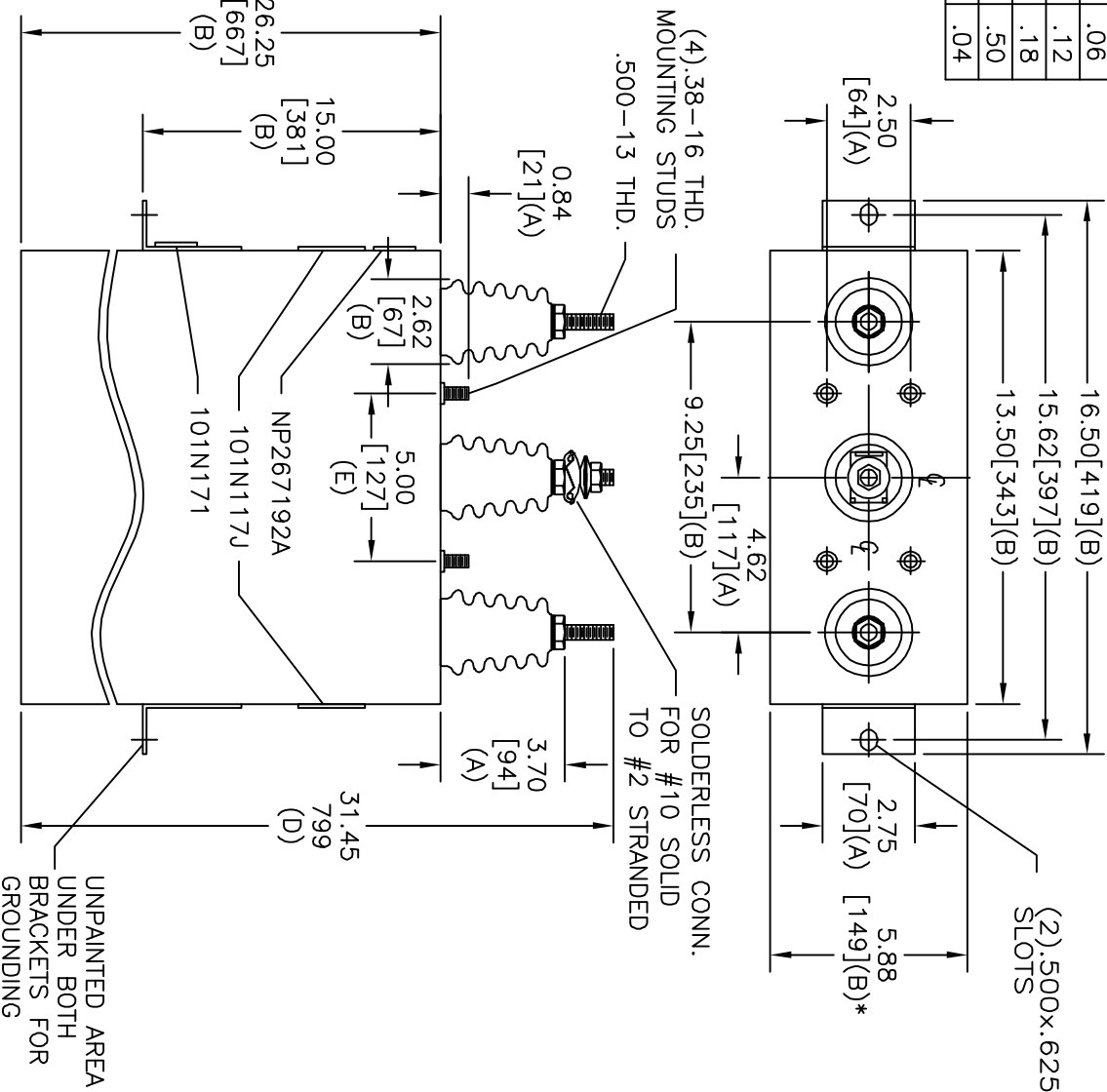


TOL	+/-
A	.06
B	.12
C	.18
D	.50
E	.04

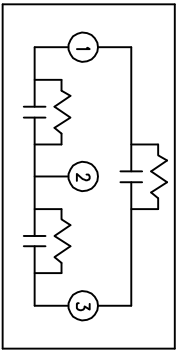


\* UP TO +.50 [13] CASE BULGE

MAX. TERMINAL TIGHTENING TORQUE 15 FT-LBS

NP267192A

SIZE	DWG NO	SHT	REV
A	16LO201WH3	2	
REV	DESCRIPTION	DATE	APPROVED



SCHEMATIC DIAGRAM - 302

1040 V	3 PH	KVBIL
300 KVAR	60 Hz	
CAT 16LO201WH3	SN	
2.85 GAL.	MFG DATE	
101N171	READ	GEH-2743

UNPAINTED AREA UNDER BOTH BRACKETS FOR GROUNDING



INDUSTRIAL SYSTEMS  
FORT EDWARD, N.Y., U.S.A.

DRAWN

B. ROSS

DATE JAN 5, 2004

ISSUED

DATE

SIZE A

SCALE

OUTLINE  
16LO201WH3

SHEET 2 CONT 3

DISTR. TO