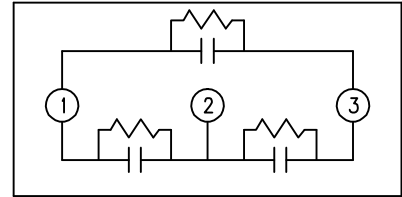
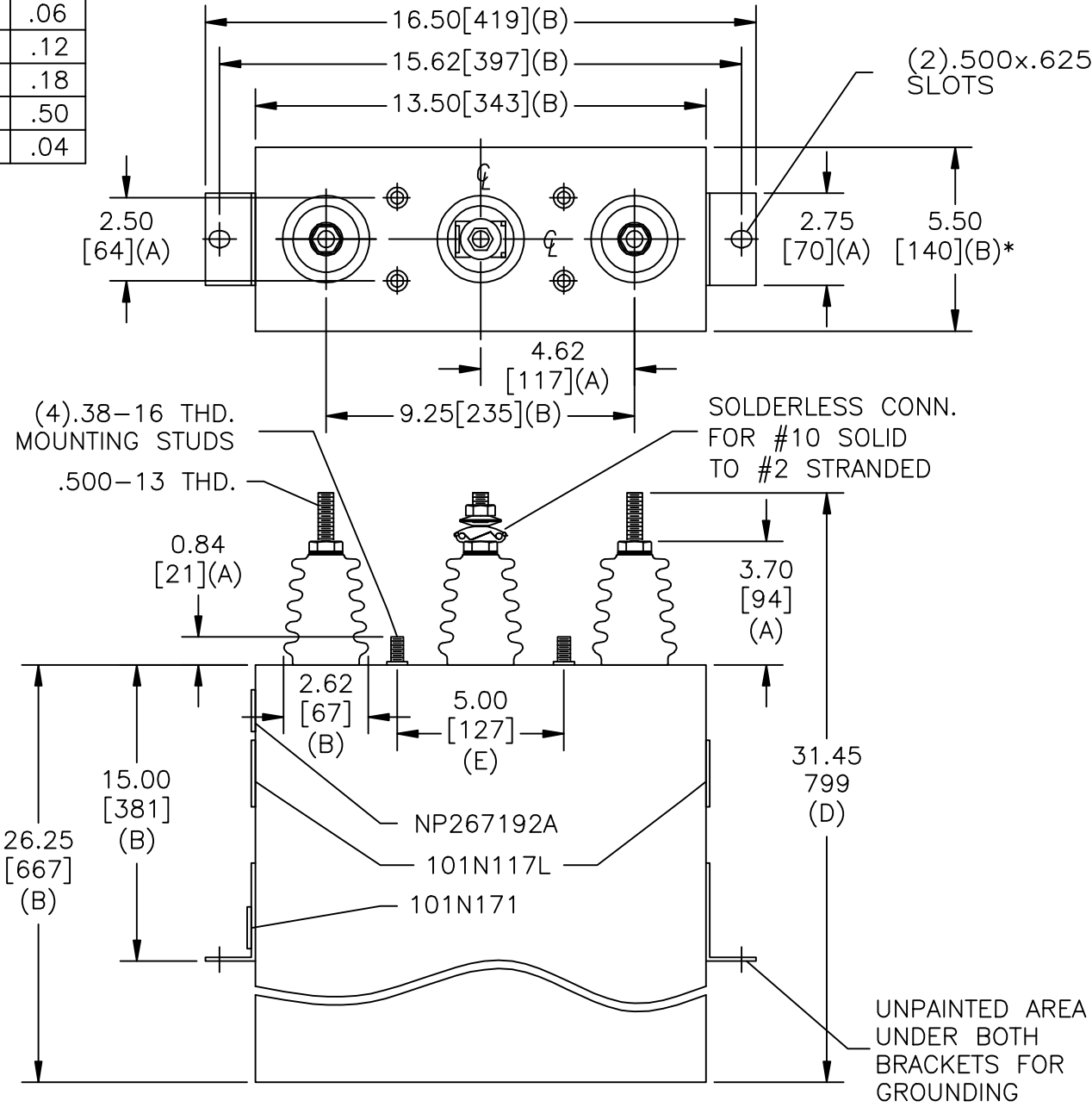


SIZE A	DWG NO 16L0202WH3	SHT 2	REV 1
REV 1	DESCRIPTION 101N117L WAS J	DATE 5/20/2008	APPROVED BTR

TOL	+/-
A	.06
B	.12
C	.18
D	.50
E	.04



1200 V      3 PH      kVBIL  
 300 KVAR      60 Hz  
 CAT 16L0202WH3      SN  
 2.60 GAL.  
 MFG DATE  
 101N171      READ GEH- 2743

UNPAINTED AREA  
 UNDER BOTH  
 BRACKETS FOR  
 GROUNDING

\* UP TO +.50 [13]  
 CASE BULGE

MAX. TERMINAL  
 TIGHTENING TORQUE  
 15 FT-LBS  
 NP267192A

<b>GE ENERGY</b> FORT EDWARD, N.Y., U.S.A.		SIZE A
DRAWN E. McGinn	DATE FEB 1, 1999	SCALE
ISSUED	DATE 2/3/99	

**OUTLINE**  
**16L0202WH3**

SHEET 2 CONT ON 3

DISTR. TO