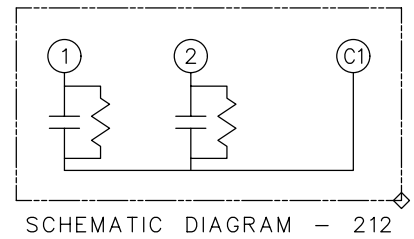


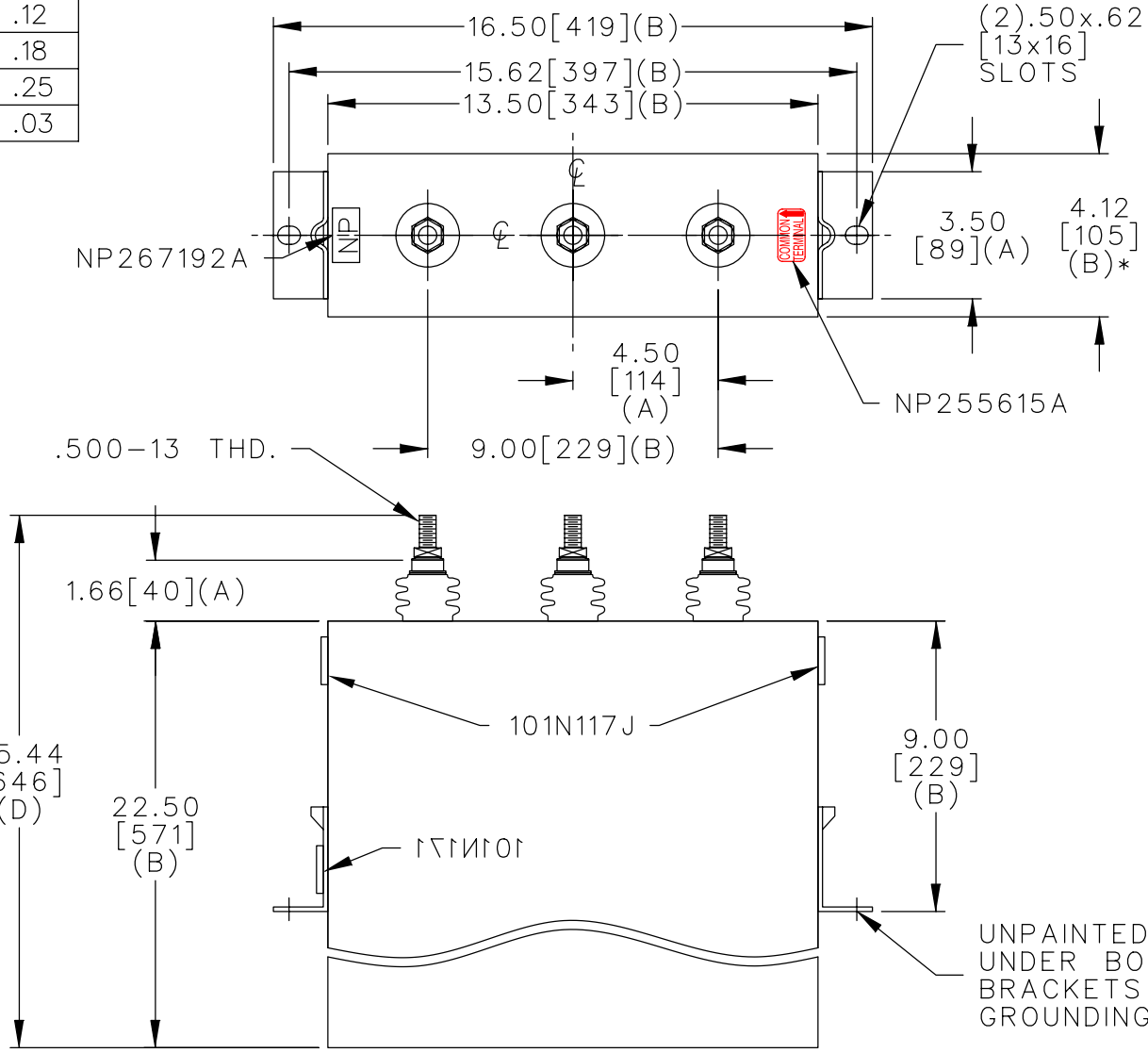
TOL	+/-	BUSH. DIA.
A	.06	1.75[44](A)
B	.12	
C	.18	
D	.25	
E	.03	

SIZE	DWG NO.	SH	REV
A	16L0217WH3	2	
REV	McGINN MOVE 101N171		
1			

TERM	uF	kVAR
1	179.6	81.25
2	179.6	81.25



1200V 1 PH
 162.5KVAR 50Hz KVBIL
 CAT. 16L0217WH3
 1.9 GAL.
 MFG DATE
 101N171 READ GEH-2743



* UP TO +.50[13]
 CASE BULGE

MAX. TERMINAL
 TIGHTENING TORQUE
 15 FT-LBS

NP267192A

	CAPACITOR & POWER PROTECTION FORT EDWARD, N.Y., U.S.A.		SIZE A	FSCM NO	OUTLINE 16L0217WH3	DISTR TO
	DRAWN E.McGINN	MAR. 8, 2000	SCALE	SHEET 2 CONT ON 3		
ISSUED	3-15-00					