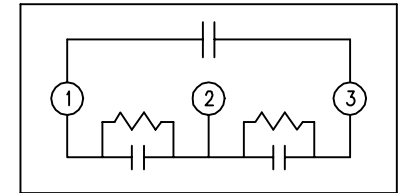
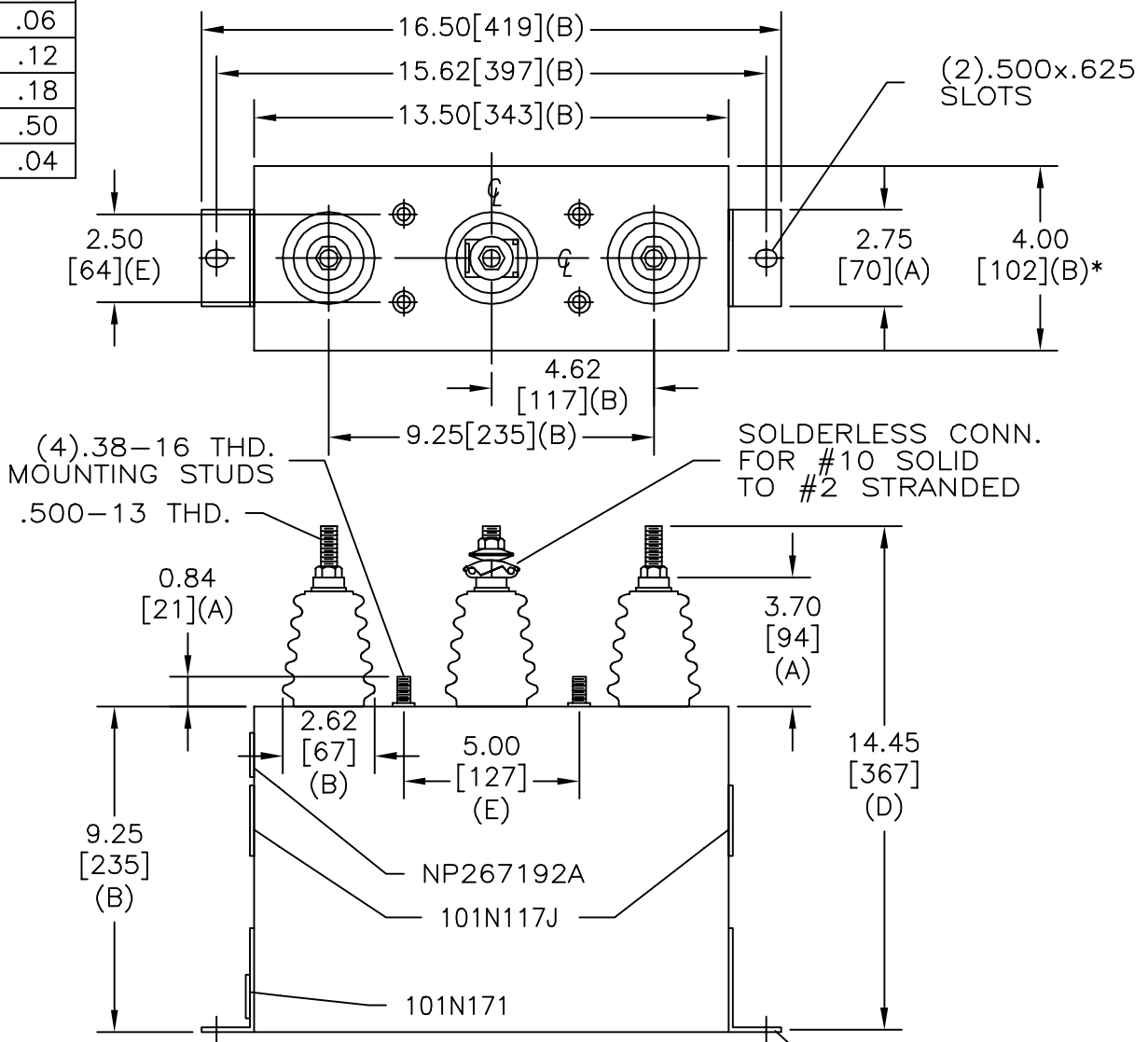


SIZE A	DWG NO 16L0223WH3	SHT 2	REV
REV	DESCRIPTION	DATE	APPROVED

TOL	+/-
A	.06
B	.12
C	.18
D	.50
E	.04



SCHEMATIC DIAGRAM - 304

1040V	3PH	60 kVBIL
60	KVAR	60 Hz
CAT	16L0223WH3	SN
	0.86 GAL.	
	MFG DATE	
101N171	READ	GEH- 2743

UNPAINTED AREA UNDER BOTH BRACKETS FOR GROUNDING

\* UP TO +.50 [13] CASE BULGE

MAX. TERMINAL TIGHTENING TORQUE 15 FT-LBS

NP267192A

INDUSTRIAL SYSTEMS FORT EDWARD, N.Y., U.S.A.	SIZE A	<h1 style="text-align: center;">OUTLINE</h1> <h2 style="text-align: center;">16L0223WH3</h2>	
	SCALE		
DRAWN B. ROSS	DATE MAR 24, 2003	SHEET 2	CONT ON 3
ISSUED	DATE 3/26/03		

DISTR. TO