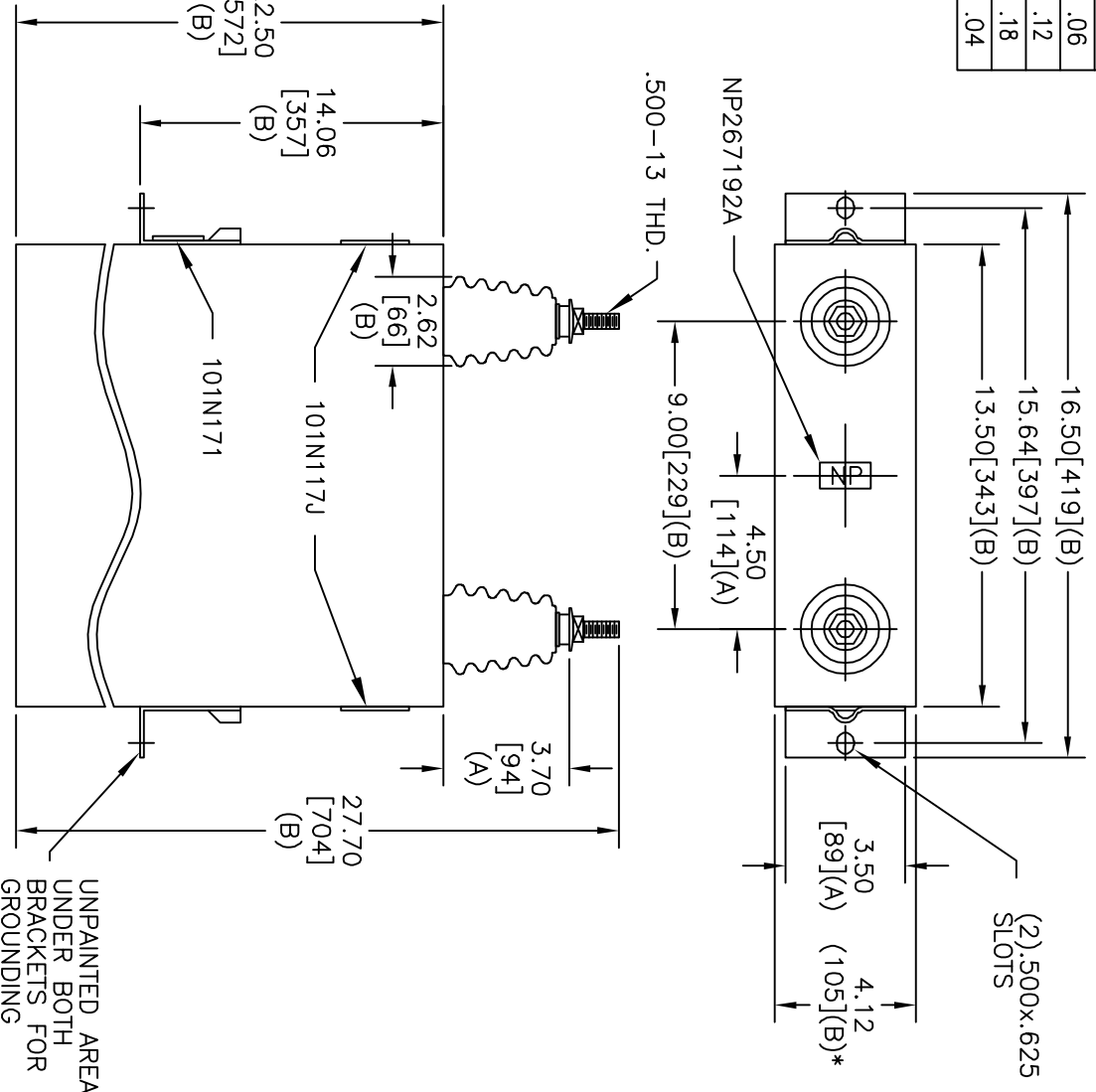
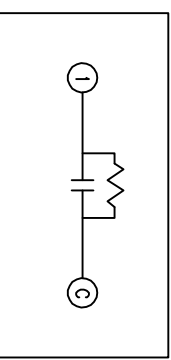


TOL	+/-
A	.06
B	.12
C	.18
D	.04



SIZE	DWG NO	SHT	REV
A	16L0230WH3	2	2
REV	DESCRIPTION	DATE	APPROVED
2	CASE WAS 22.00	11/7/06	BTR



SCHEMATIC DIAGRAM - 102

1200 V	1 PH	KVBIL
150 KVAR	60 HZ	
CAT 16L0230WH3	SN	
1.65 GAL.	MFG DATE	
101N1171	READ	GEH-2743

* UP TO +.50 CASE BULGE

UNPAINTED AREA UNDER BOTH BRACKETS FOR GROUNDING

MAX. TERMINAL TIGHTENING TORQUE 15 FT-LBS

NP267192A



GE ENERGY
FORT EDWARD, N.Y., U.S.A.

DRAWN E. McGinn

ISSUED

DATE 11/28/2000

DATE 11/28/2000

SIZE A

SCALE

OUTLINE
16L0230WH3

SHEET 2 CONT 3

DISTR. TO