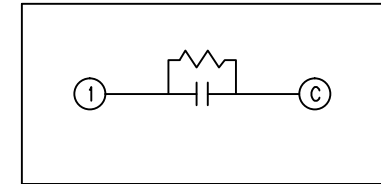
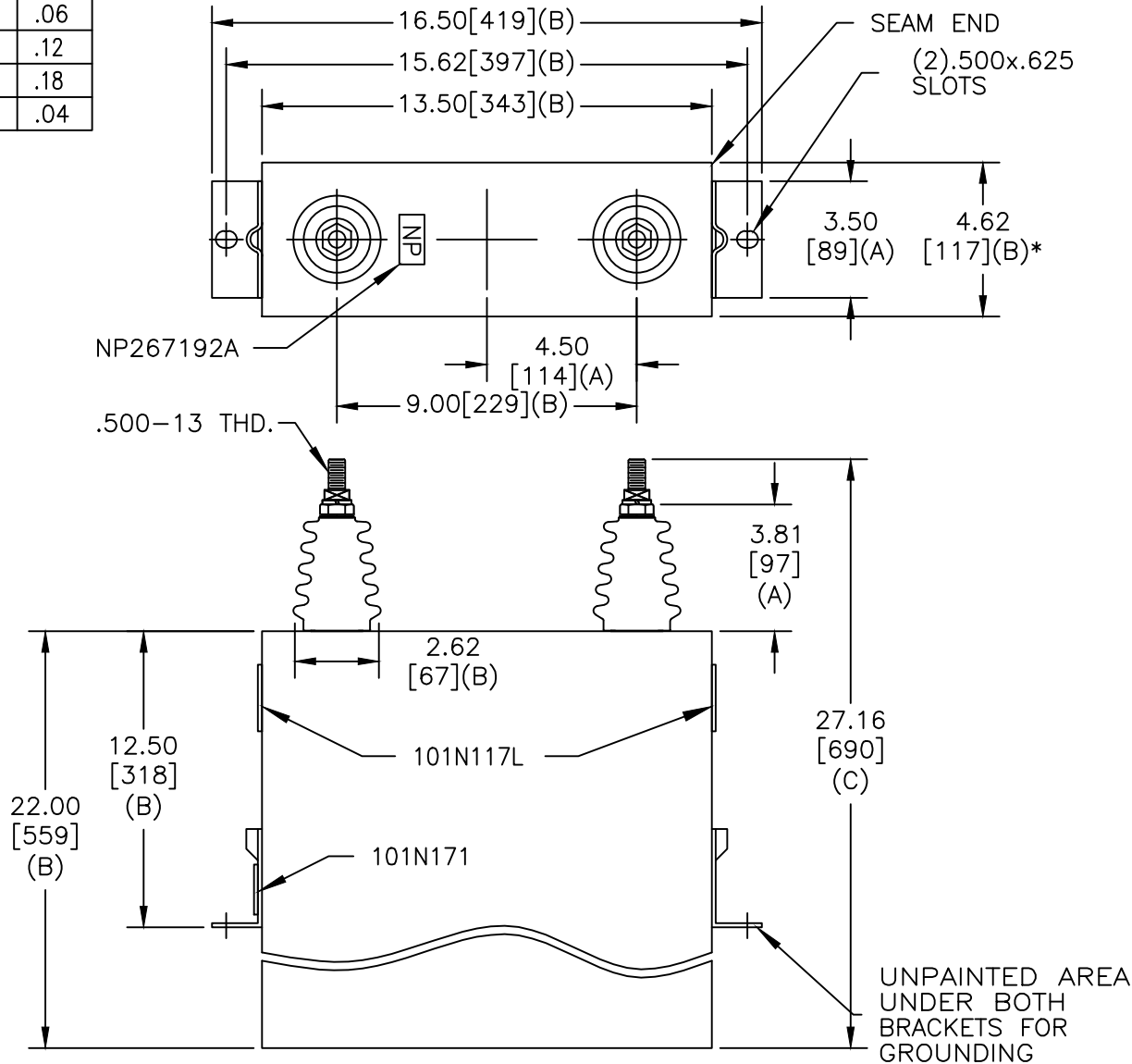


TOL	+/-
A	.06
B	.12
C	.18
D	.04

SIZE A	DWG NO 16L0233WH3	SHT 2	REV 1
REV 1	DESCRIPTION RETRACE	DATE 9/18/06	APPROVED BTR



SCHEMATIC DIAGRAM - 102

2600V	1 PH	kVBIL
240	KVAR	60 Hz
CAT	16L0233WH3	SN
	2.1 GAL.	
	MFG DATE	
101N171	READ	GEH- 2743

* UP TO +.50 [13] CASE BULGE

MAX. TERMINAL TIGHTENING TORQUE 15 FT-LBS
NP267192A

GE ENERGY FORT EDWARD, N.Y., U.S.A.		SIZE A
DRAWN	E. McGinn	DATE 2/2/2001
ISSUED		DATE 2/7/2001

<h1>OUTLINE</h1> <h2>16L0233WH3</h2>		SHEET 2	CONT ON 3
--------------------------------------	--	---------	-----------

DISTR. TO