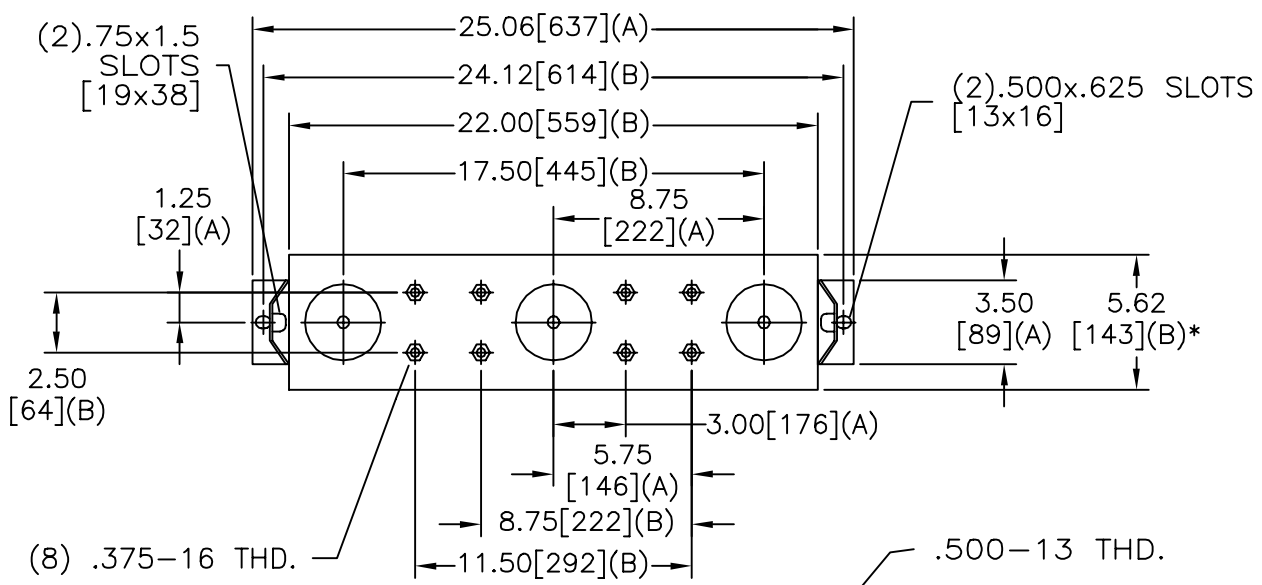
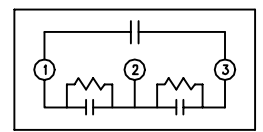
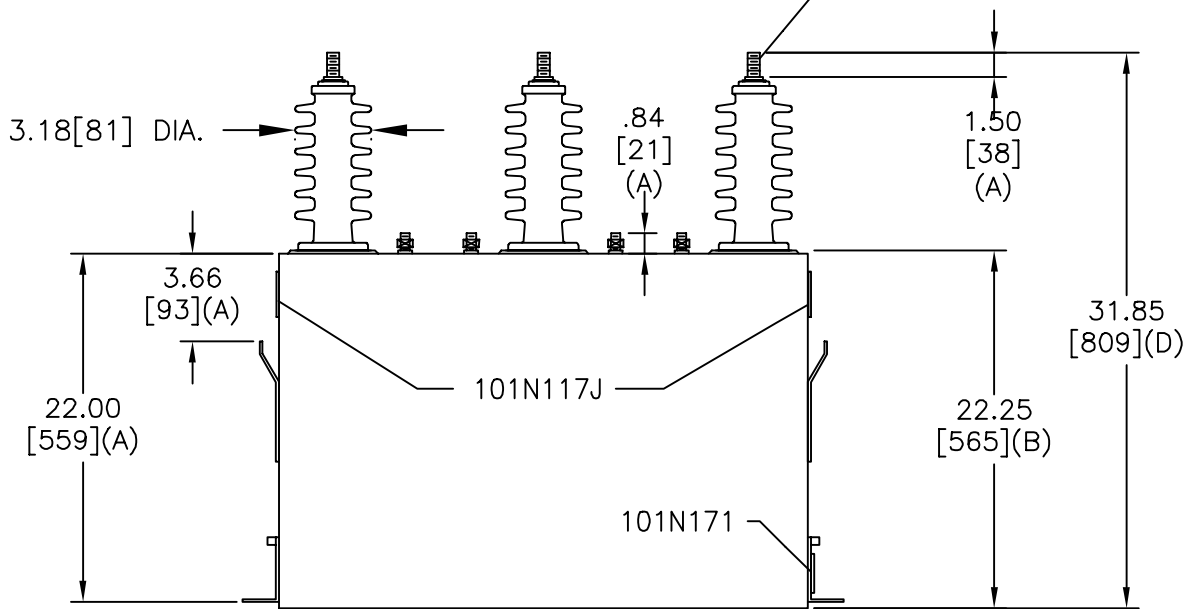


SIZE A	DWG NO 16L0240WH3	SHT 2	REV
REV	DESCRIPTION	DATE	APPROVED



TOL	+/-
A	.06
B	.12
C	.18
D	.25

* UP TO +.75 CASE BULGE



13800 VOLTS 3 PH KVBIL
 300 KVAR 60 HZ
 CAT. 16L0240WH3
 3.54 GALS.
 MFG DATE
 101N171 READ GEH-2743

INDUSTRIAL SYSTEMS FORT EDWARD, N.Y., U.S.A.	SIZE A	<h1>OUTLINE</h1> <h2>16L0240WH3</h2>
	SCALE	
DRAWN E. McGinn	DATE SEPT 28, 2001	SHEET 2 CONT ON 3
ISSUED	DATE	

DISTR. TO