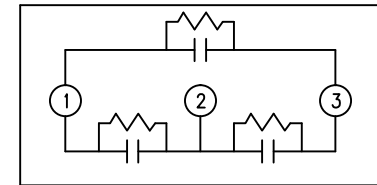
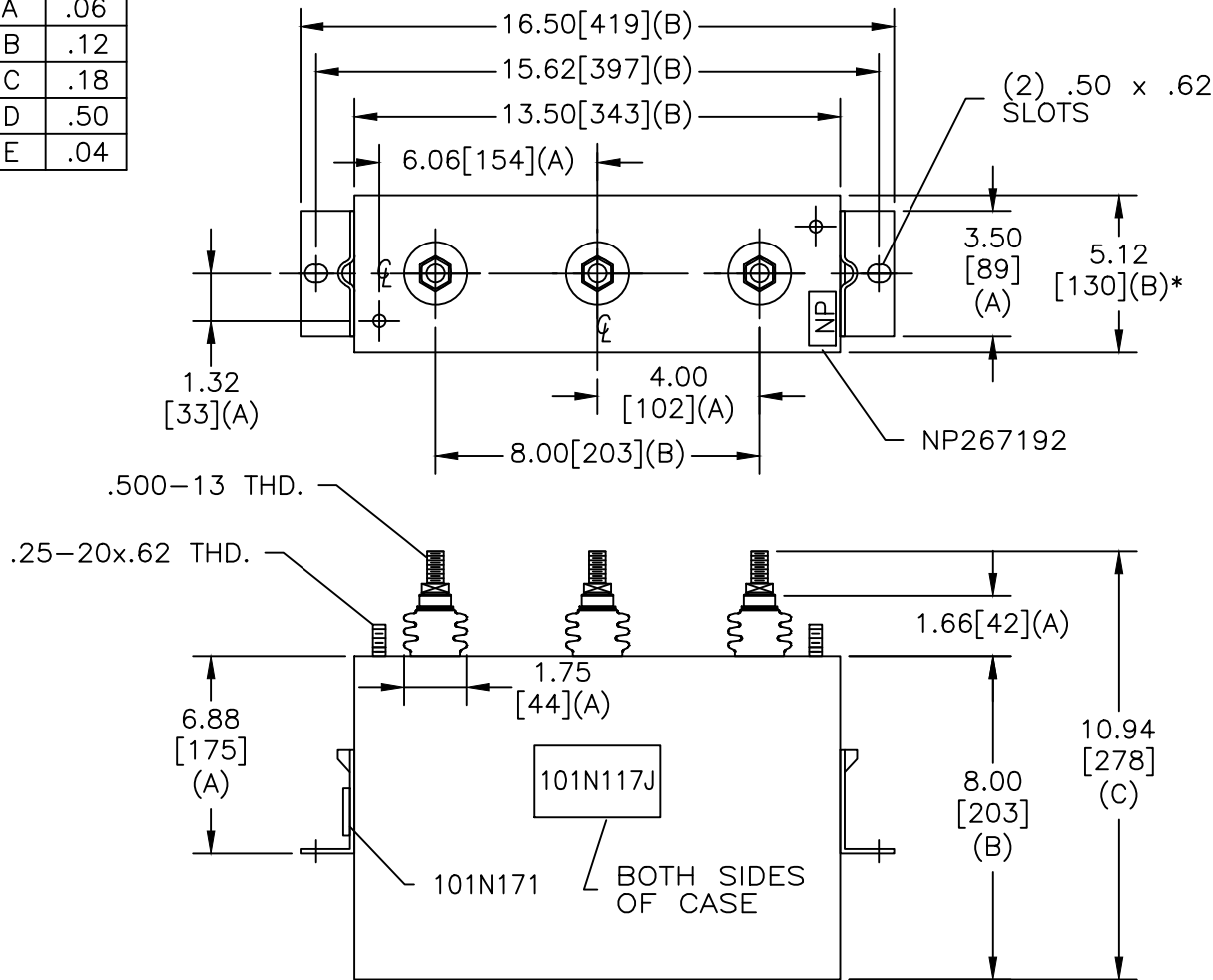


TOL	+/-
A	.06
B	.12
C	.18
D	.50
E	.04

SIZE A	DWG NO 16L0246WH3	SHT 2	REV 1
REV 1	DESCRIPTION CASE WAS 4.88	DATE 6/4/2012	APPROVED JBC




SCHEMATIC DIAGRAM - 302

480V 3 PH DELTA 30 kVBIL
 25 KVAR 60 Hz
 CAT 16L0246WH3 SN
 0.7 GAL.
 MFG DATE
 101N171 READ GEH- 2743

* UP TO +.50
CASE BULGE

MAX. TERMINAL
TIGHTENING TORQUE
15 FT-LBS

NP267192A

 INDUSTRIAL SYSTEMS FORT EDWARD, N.Y., U.S.A.		SIZE A
DRAWN B. ROSS	DATE NOV 3, 2005	SCALE
ISSUED	DATE 11/23/05	

OUTLINE
16L0246WH3

SHEET 2 CONT ON 3

DISTR. TO