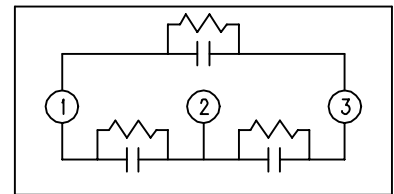
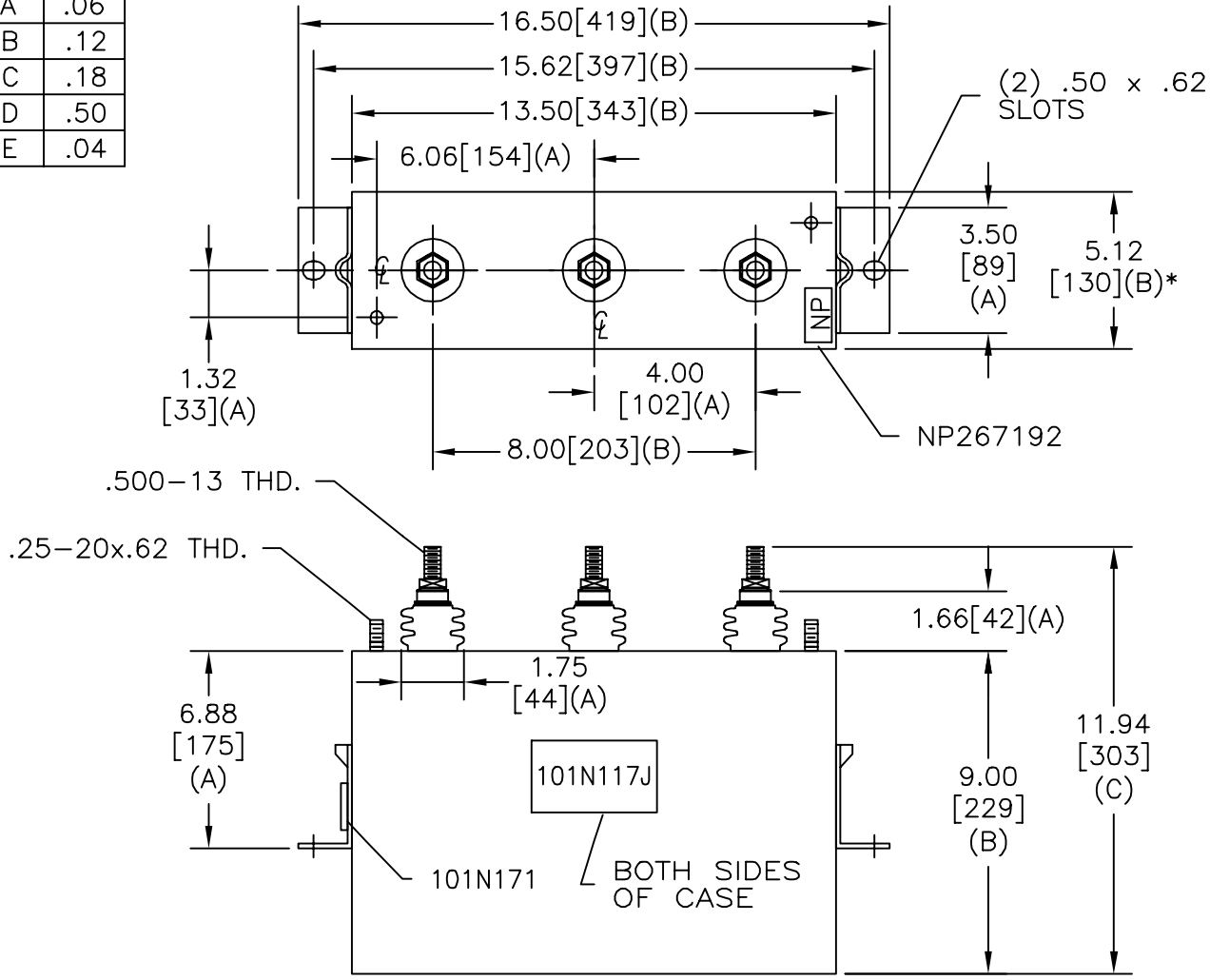


TOL	+/-
A	.06
B	.12
C	.18
D	.50
E	.04

SIZE A	DWG NO 16L0247WH3	SHT 2	REV
REV	DESCRIPTION	DATE	APPROVED



SCHEMATIC DIAGRAM - 302

480V                    3 PH DELTA    30 kVBIL  
 30    KVAR            60 Hz  
 CAT    16L0247WH3    SN  
           1.24 GAL.  
                           MFG DATE  
 101N171                    READ GEH- 2743

\* UP TO +.50  
CASE BULGE

MAX. TERMINAL  
TIGHTENING TORQUE  
15 FT-LBS

NP267192A

INDUSTRIAL SYSTEMS FORT EDWARD, N.Y., U.S.A.		SIZE A
DRAWN	B. ROSS	DATE DEC 11, 2002
ISSUED		DATE 12/18/02

OUTLINE  
16L0247WH3

SHEET 2 CONT ON 3

DISTR. TO