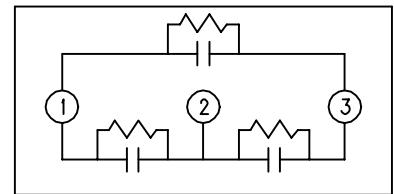
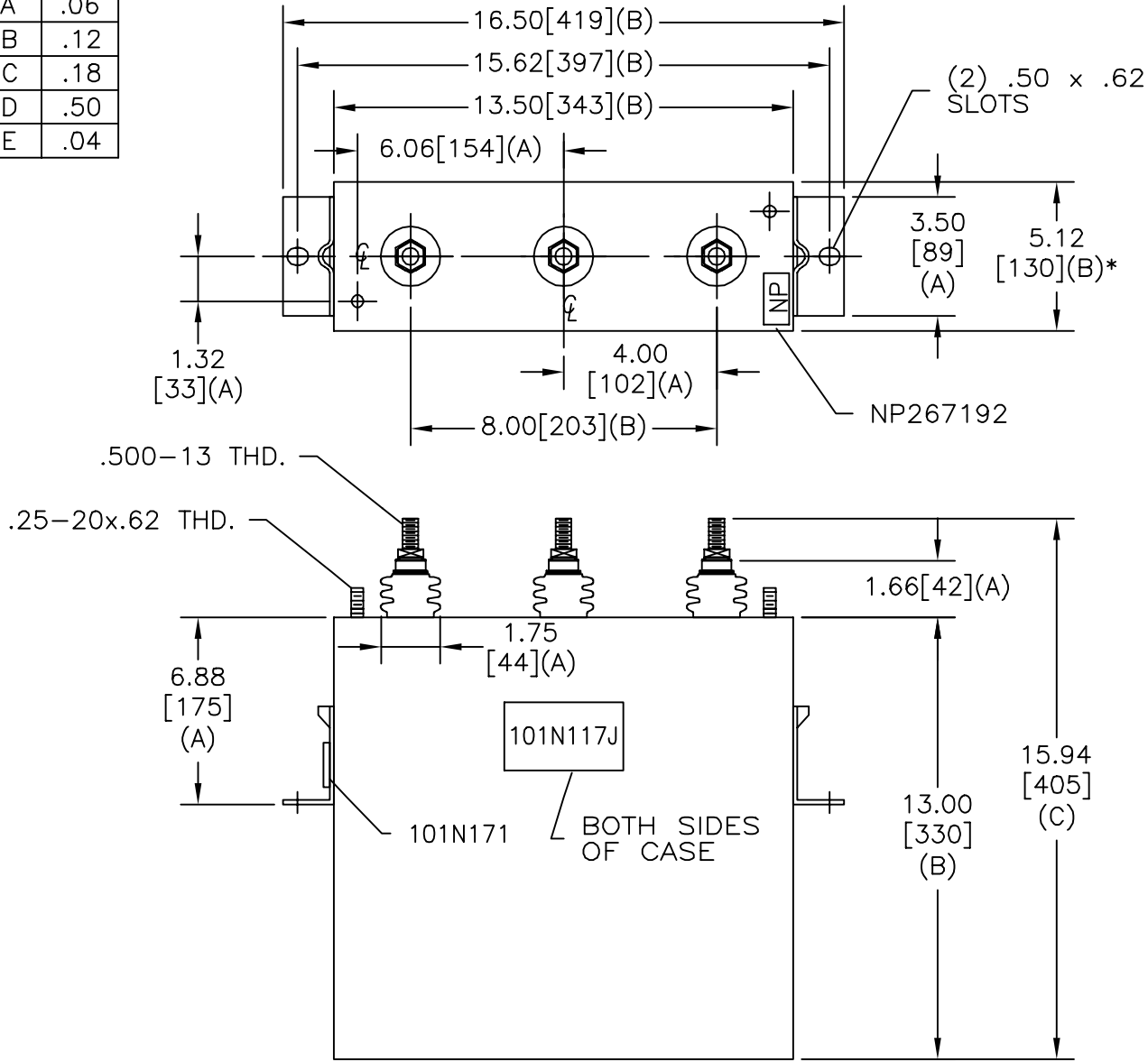


SIZE A	DWG NO 16L0249WH3	SHT 2	REV
REV	DESCRIPTION	DATE	APPROVED

TOL	+/-
A	.06
B	.12
C	.18
D	.50
E	.04



SCHEMATIC DIAGRAM - 302

480V                      3 PH                      30 kVBIL  
50                      KVAR                      60 Hz  
CAT                      16L0249WH3                      SN  
   1.39 GAL.  
   MFG DATE  
101N171                      READ GEH- 2743

\* UP TO +.50  
CASE BULGE

MAX. TERMINAL  
TIGHTENING TORQUE  
15 FT-LBS

NP267192A

<b>INDUSTRIAL SYSTEMS</b> <b>FORT EDWARD, N.Y., U.S.A.</b>	SIZE A
	SCALE
DRAWN B. ROSS	DATE NOV 20, 2002
ISSUED	DATE 11-27-02

**OUTLINE**  
**16L0249WH3**

SHEET 2 CONT ON 3

DISTR. TO