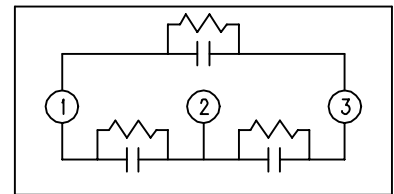
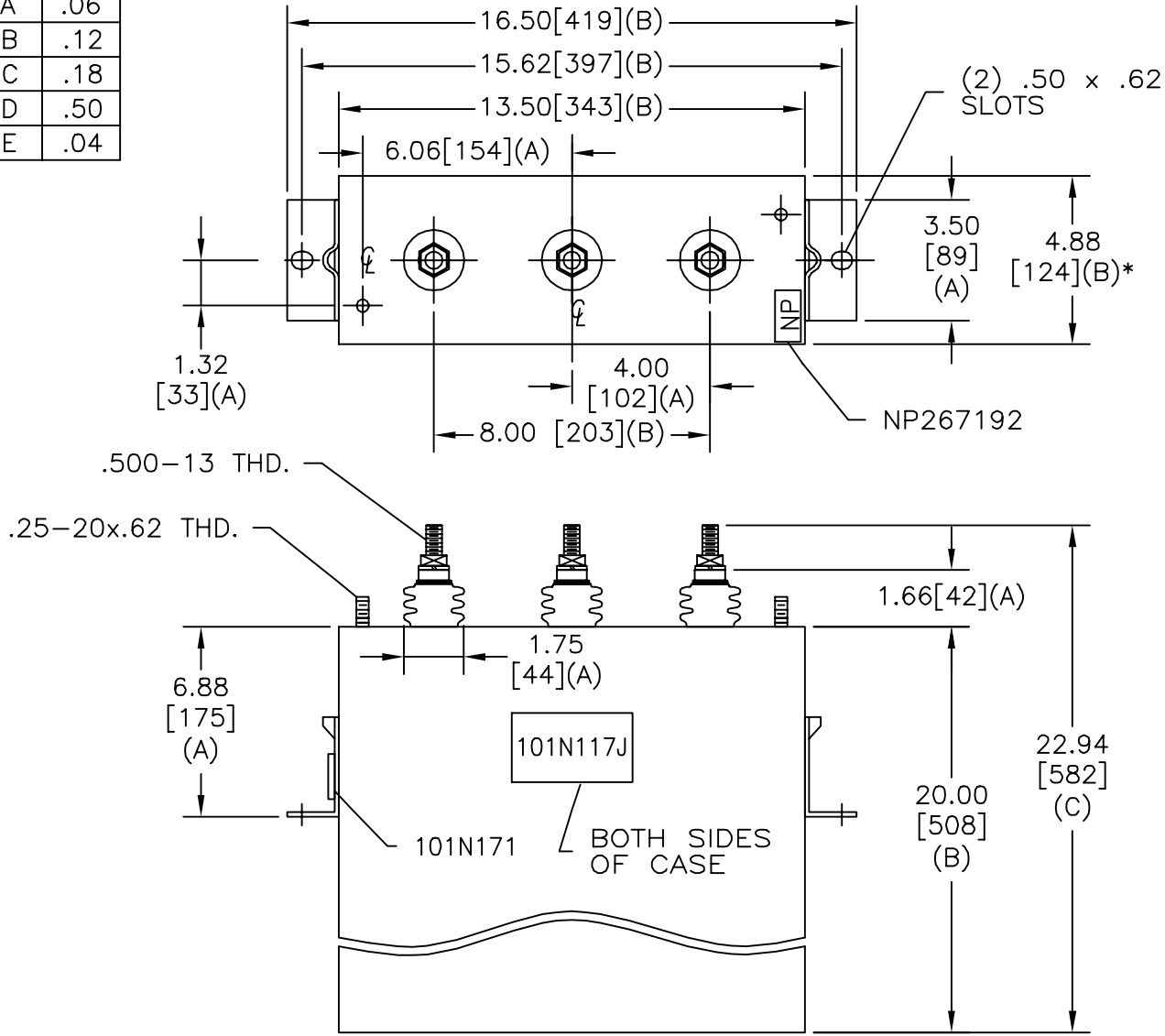


TOL	+/-
A	.06
B	.12
C	.18
D	.50
E	.04

SIZE A	DWG NO 16L0251WH3	SHT 2	REV
REV	DESCRIPTION	DATE	APPROVED



SCHEMATIC DIAGRAM - 302

480V 3 PH DELTA 30 kVBIL
 75 KVAR 60 Hz
 CAT 16L0251WH3 SN
 1.57 GAL.
 MFG DATE
 101N171 READ GEH- 2743

* UP TO +.50
CASE BULGE

MAX. TERMINAL
TIGHTENING TORQUE
15 FT-LBS

NP267192A

INDUSTRIAL SYSTEMS FORT EDWARD, N.Y., U.S.A.		SIZE A	<h1>OUTLINE</h1> <h2>16L0251WH3</h2>	
DRAWN COLE	DATE APR 16, 2003	SCALE		
ISSUED	DATE	SHEET 2	CONT ON 3	DISTR. TO