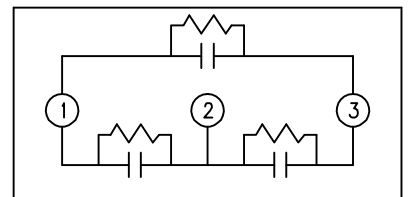
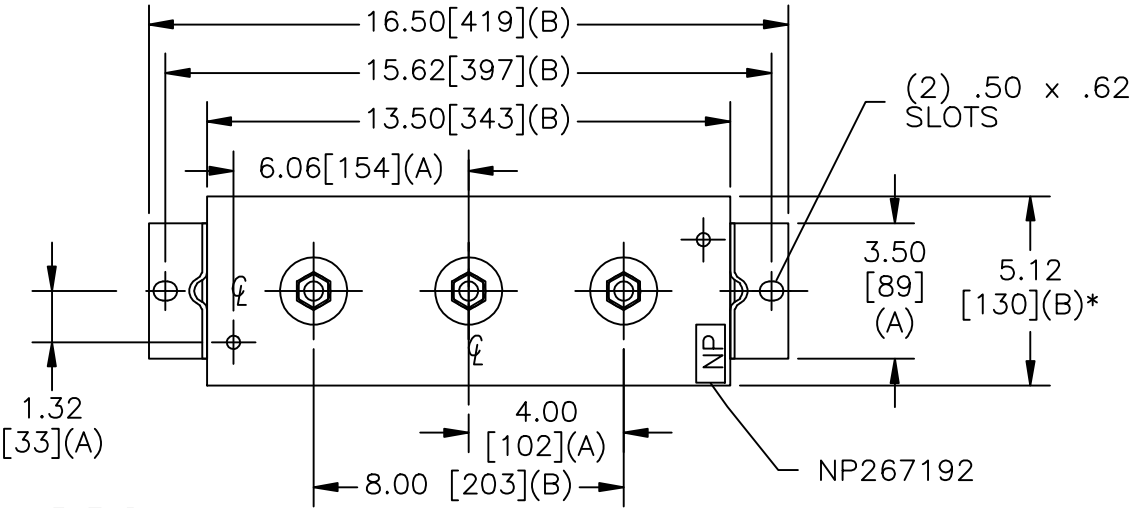
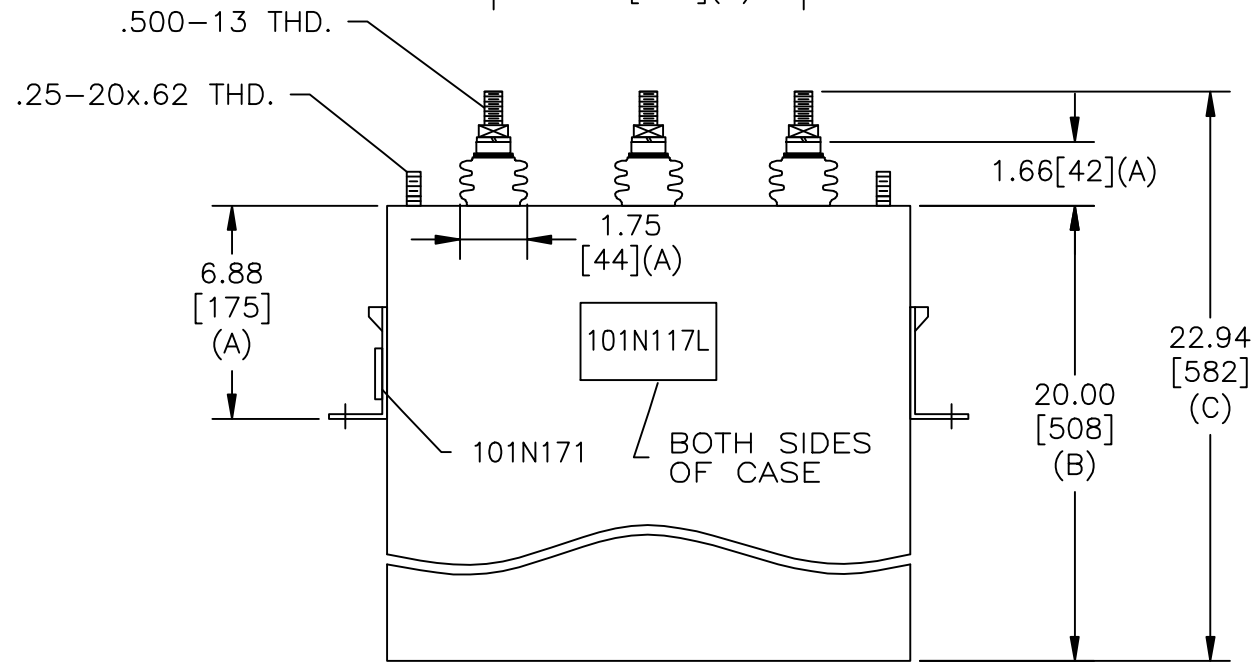


SIZE A	DWG NO 16L0252WH3	SHT 2	REV
REV	DESCRIPTION	DATE	APPROVED

TOL	+/-
A	.06
B	.12
C	.18
D	.50
E	.04



SCHEMATIC DIAGRAM - 302



480V                    3 PH DELTA    30 kVBIL  
80    KVAR            60 Hz  
CAT    16L0252WH3    SN  
          1.66 GAL.  
                          MFG DATE  
101N171                READ GEH- 2743

\* UP TO +.50  
CASE BULGE

MAX. TERMINAL  
TIGHTENING TORQUE  
15 FT-LBS  
NP267192A

<b>GE ENERGY</b> FORT EDWARD, N.Y., U.S.A.	SIZE A	<b>OUTLINE</b> <b>16L0252WH3</b>	SHEET 2    CONT ON 3
	DRAWN    B.Ross    DATE    5/29/2008 ISSUED               DATE    5/29/2008		

DISTR. TO