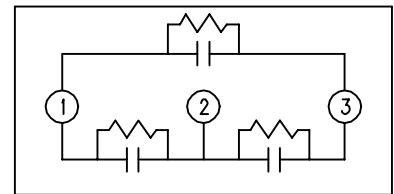
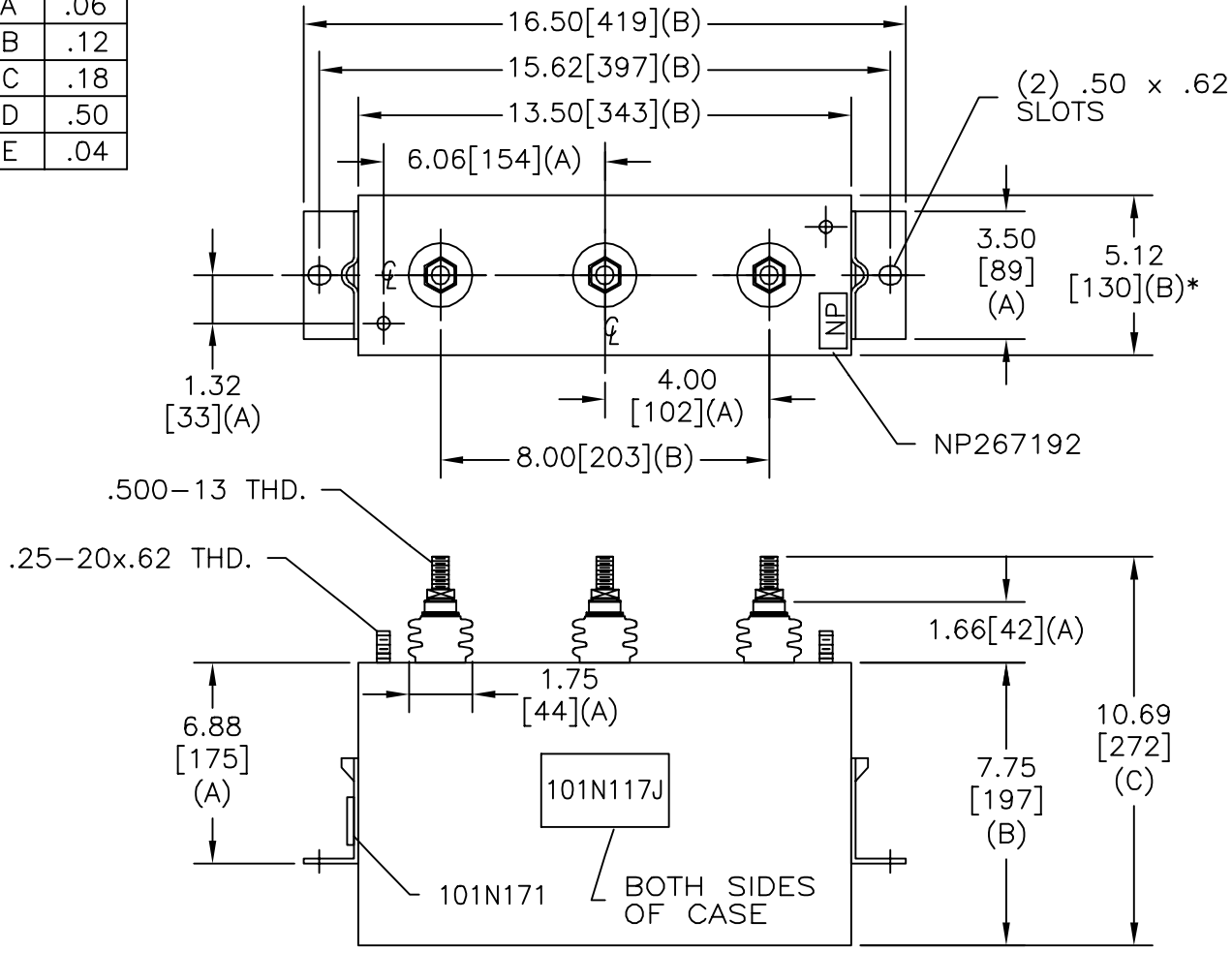


SIZE A	DWG NO 16L0255WH3	SHT 2	REV
REV	DESCRIPTION	DATE	APPROVED

TOL	+/-
A	.06
B	.12
C	.18
D	.50
E	.04



600V 3 PH DELTA 30 kVBIL
 40 KVAR 60 Hz
 CAT 16L0255WH3 SN
 1.07 GAL.
 MFG DATE
 101N171 READ GEH- 2743

* UP TO +.50
CASE BULGE

MAX. TERMINAL
TIGHTENING TORQUE
15 FT-LBS

NP267192A

 INDUSTRIAL SYSTEMS FORT EDWARD, N.Y., U.S.A.	SIZE A	<h1>OUTLINE</h1> <h2>16L0255WH3</h2>	
	SCALE		
DRAWN B. ROSS	DATE DEC 12, 2002	SHEET 2	CONT ON 3
ISSUED	DATE 12/18/02		

DISTR. TO