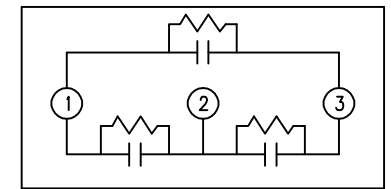
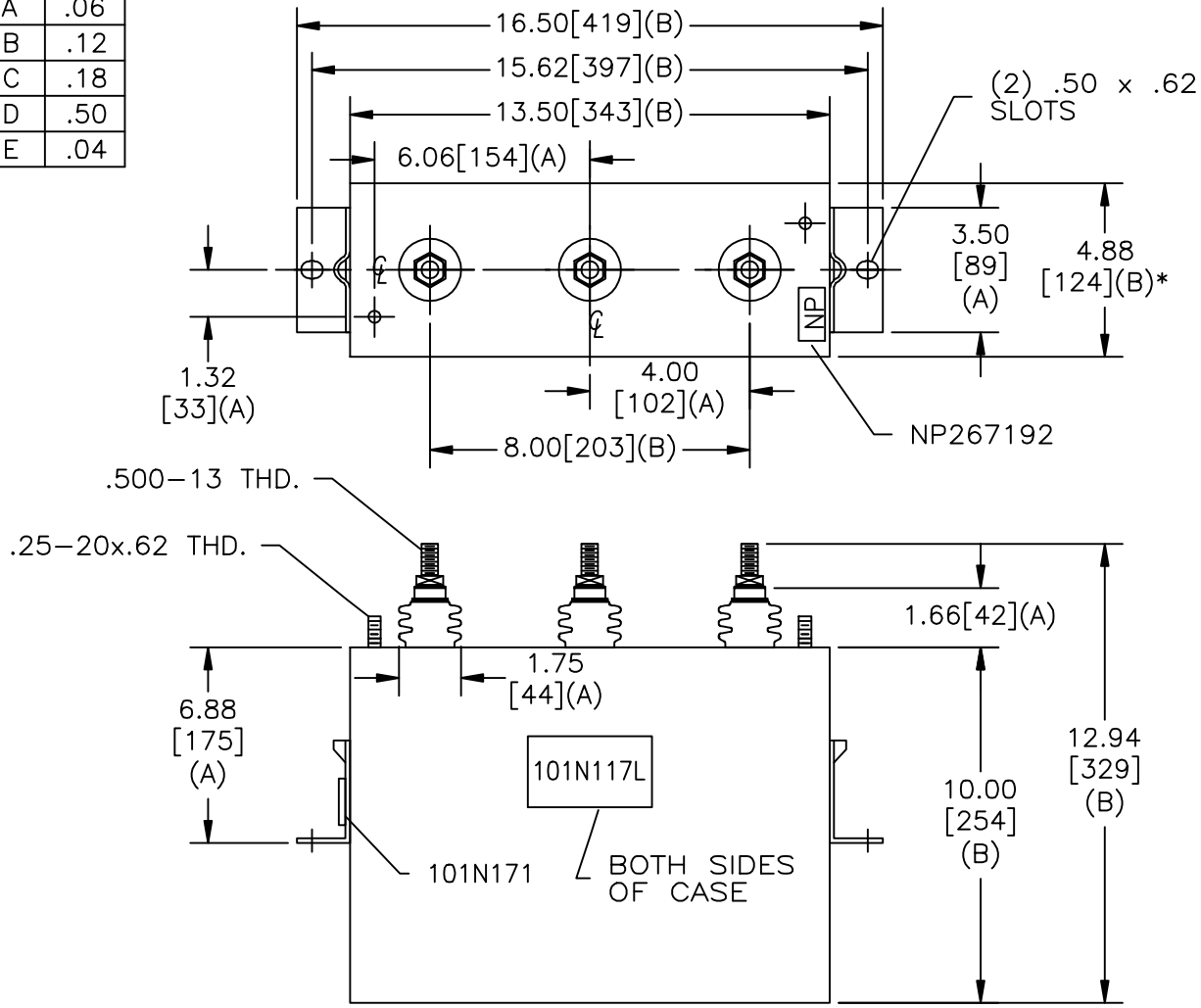


SIZE A	DWG NO 16L0256WH3	SHT 2	REV
REV	DESCRIPTION	DATE	APPROVED

TOL	+/-
A	.06
B	.12
C	.18
D	.50
E	.04



SCHEMATIC DIAGRAM - 302

600V                    3 PH DELTA    30 kVBIL  
 50    KVAR            60 Hz  
 CAT    16L0256WH3    SN  
           .78 GAL.  
                           MFG DATE  
 101N171                    READ GEH- 2743

\* UP TO +.50  
CASE BULGE

MAX. TERMINAL  
TIGHTENING TORQUE  
15 FT-LBS  
NP267192A

<b>GE ENERGY</b> FORT EDWARD, N.Y., U.S.A.		SIZE A	<h1>OUTLINE</h1> <h2>16L0256WH3</h2>
DRAWN B. ROSS	DATE 2/11/2010	SCALE	
ISSUED	DATE 2/11/2010	SHEET 2	CONT ON 3

DISTR. TO