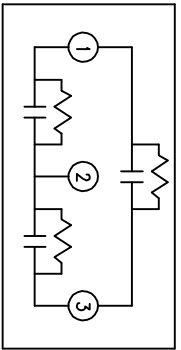
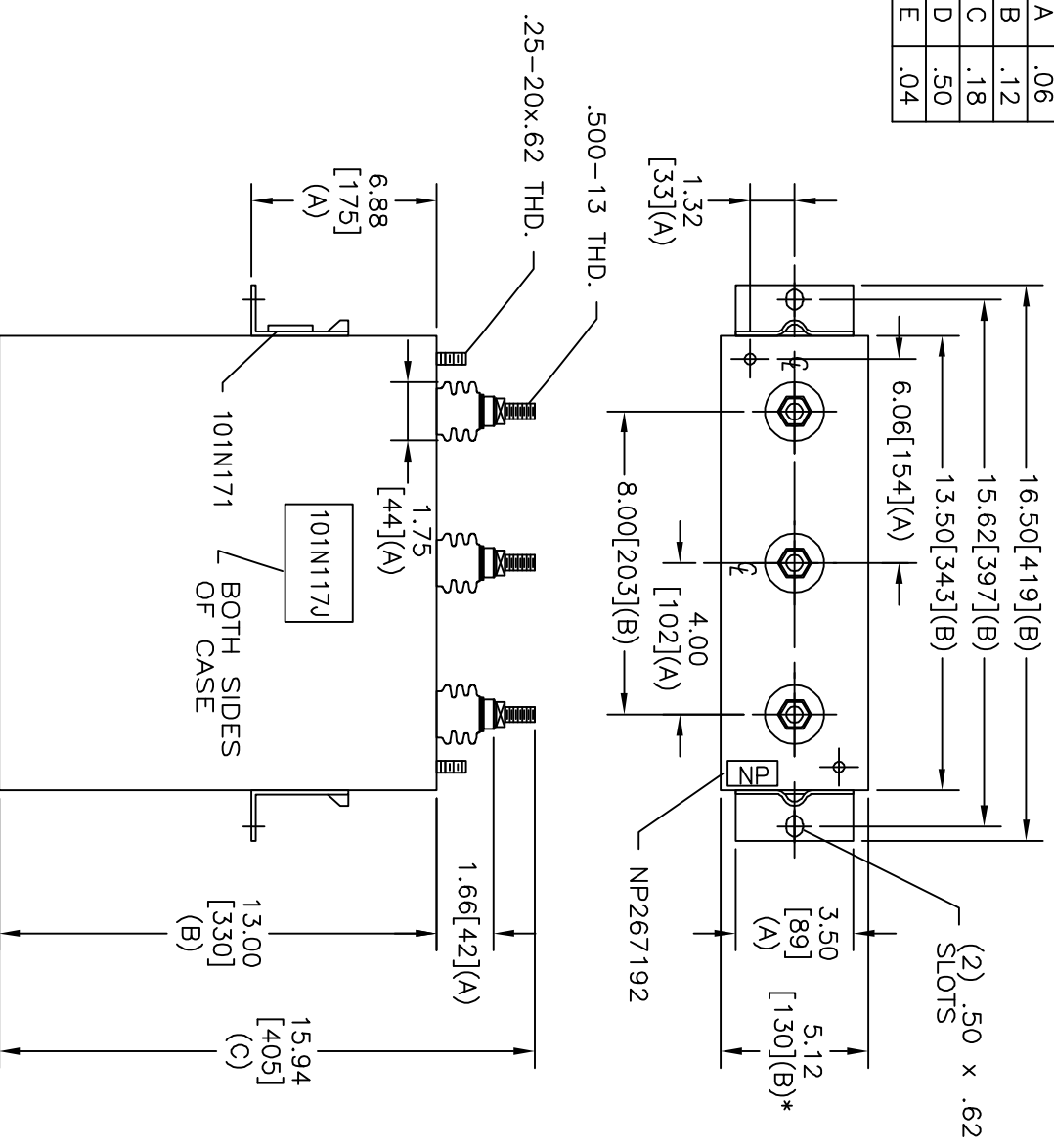


TOL	+/-
A	.06
B	.12
C	.18
D	.50
E	.04



SCHEMATIC DIAGRAM - 302

600V 3 PH DELTA 30 KVBL
 75 KVAR 60 HZ
 CAT 16L0258WH3 SN
 1.39 GAL. MFG DATE
 101N171 READ GEH-2743

* UP TO +.50 CASE BULGE

MAX. TERMINAL TIGHTENING TORQUE 15 FT-LBS

SIZE	DWG NO	SHT	REV
A	16L0258WH3	2	
REV	DESCRIPTION	DATE	APPROVED

INDUSTRIAL SYSTEMS
 FORT EDWARD, N.Y., U.S.A.

DRAWN B. ROSS
 ISSUED

DATE MAY 3, 2004
 DATE 5/5/04

SCALE A

OUTLINE
 16L0258WH3

SHEET 2 CONT 3

DISTR. TO