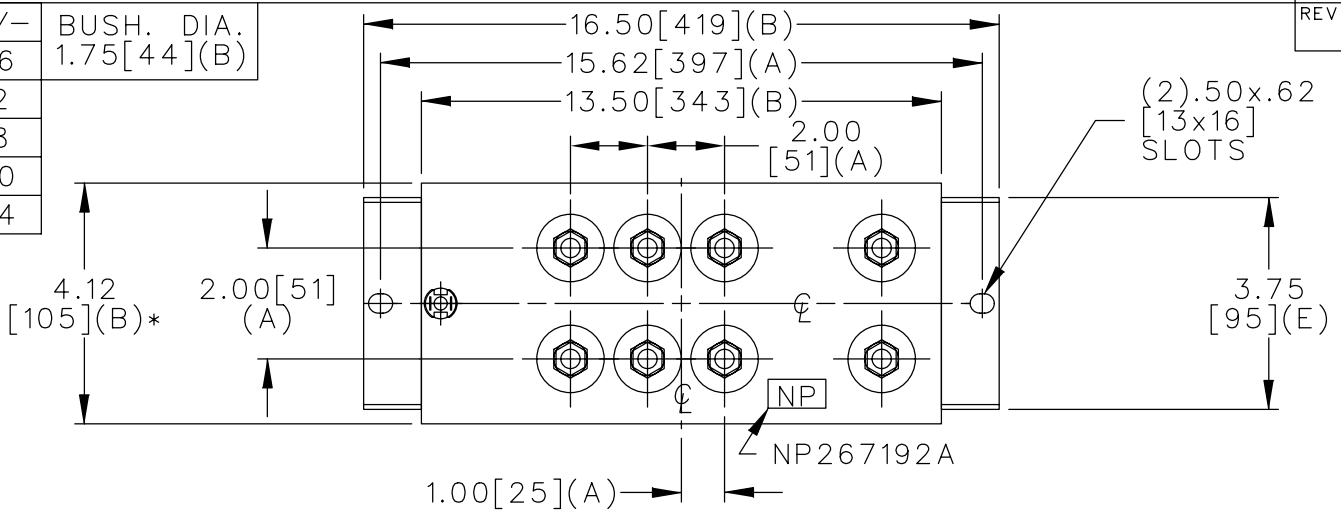
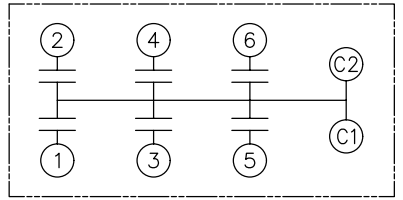


TOL	+/-	BUSH. DIA.
A	.06	1.75[44](B)
B	.12	
C	.18	
D	.50	
E	.04	

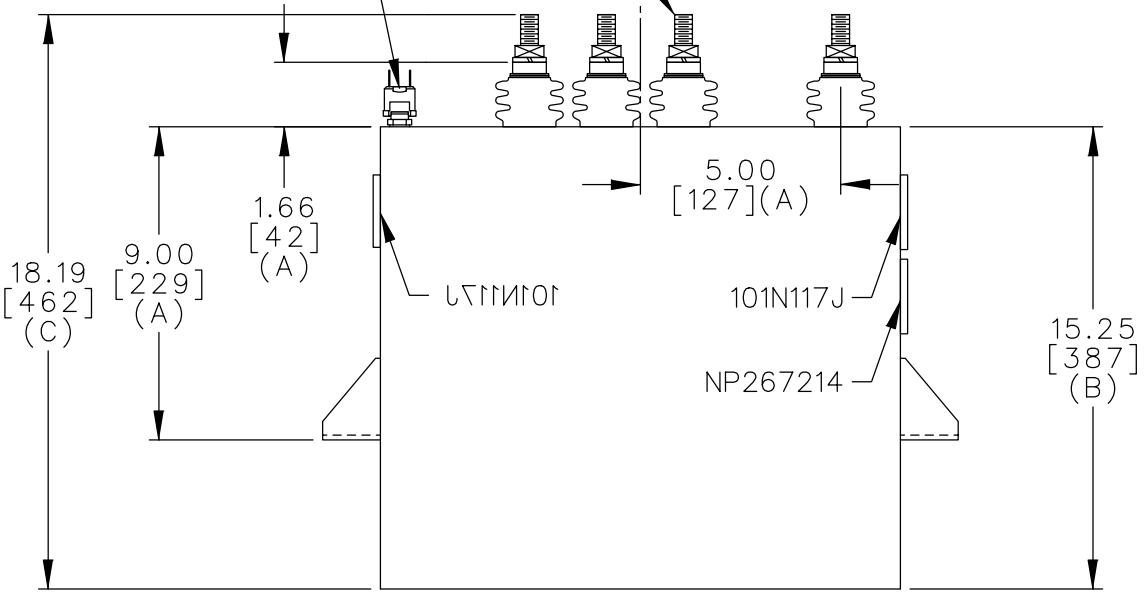


TERM	uF	kVAR
1	.76	6.3
2	1.52	12.6
3	3.04	25.3
4	6.08	50.6
5	12.17	101.1
6	12.17	101.1



SCHEMATIC DIAGRAM - 615

PRESS.SW.
12 PSIG N.C.
500-13 THD.



NO INTERNAL DISCH RESISTORS
 CAT. 16L0261WH4 SN
 297KVAR 1150V 1000HZ 1PH
 .7+1.5+3+6.1+2x12.2 UF/TAP
 1.63 GALS. COMBUSTIBLE LIQUID
 CAUTION! BEFORE INSTALLING OR
 OPERATING READ GEH-2743
 NP267214

FINISH: ANSI 70 GRAY PAINT
 OVER ALUMINUM.

NOTE 1: MIN. CLEARANCE OF 1" REQD. FOR COOLING.

* UP TO +.50[13]
 CASE BULGE

MAX. TERMINAL
 TIGHTENING TORQUE
 15 FT-LBS

NP267192A

	CAPACITOR & POWER PROTECTION FORT EDWARD, N.Y., U.S.A.		SIZE A	<h1 style="text-align: center;">OUTLINE</h1> <h2 style="text-align: center;">16L0261WH4</h2>		SHEET 2 CONT. 3
	DRAWN E.McGINN NOV. 6, 2001	ISSUED	SCALE			