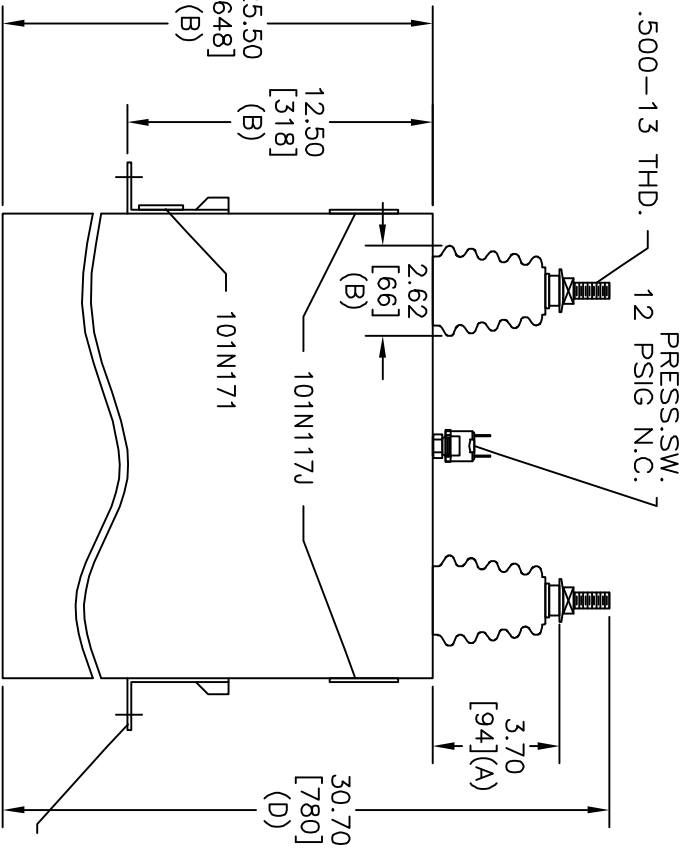
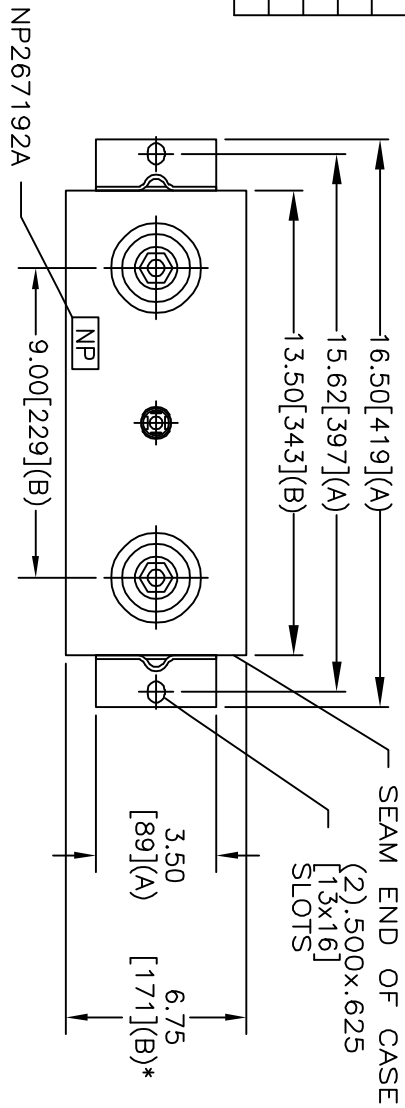


TOL	+/-
A	.06
B	.12
C	.18
D	.50
E	.04



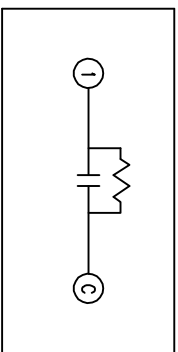
UNPAINTED AREA
UNDER BOTH
BRACKETS FOR
GROUNDING

* UP TO $\pm .50$ [13]
CASE BULGE

MAX. TERMINAL
TIGHTENING TORQUE
15 FT-LBS

NP267192A

SIZE	DWG NO	SHT	REV
A	16L0273WH4	2	
REV	DESCRIPTION	DATE	APPROVED



SCHEMATIC DIAGRAM - 102

2770V 1 PH
399KVAR 60HZ KVBIL
CAT. 16L0273WH4
4.7 GAL.
MFG DATE
READ GEH-2743
101N1171



INDUSTRIAL SYSTEMS
FORT EDWARD, N.Y., U.S.A.

DRAWN B. ROSS

DATE MAR. 16, 2002

ISSUED

DATE

SIZE

A

SCALE

OUTLINE

16L0273WH4

SHEET 2 CONT ON

DISTR. TO