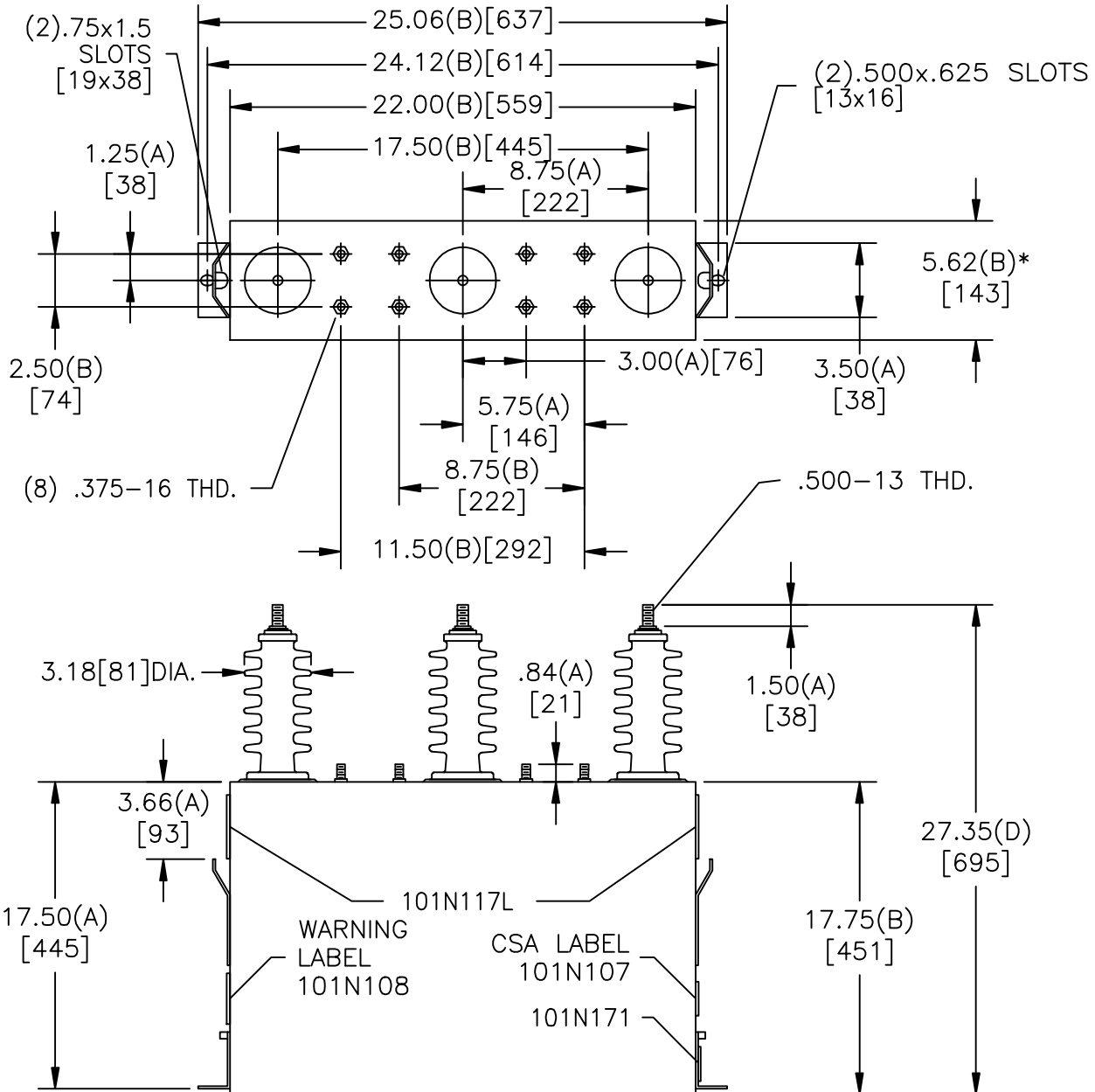
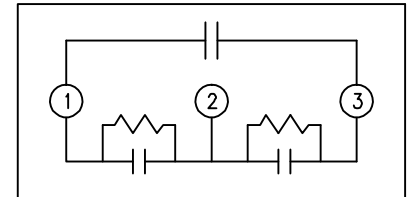


SIZE A	DWG NO 16L0279WH3	SHT 2	REV 1
REV 1	DESCRIPTION 101N117L WAS J	DATE 11/17/2008	APPROVED BTR



TOL	+/-
A	.06
B	.12
C	.18
D	.25

\* UP TO +.50 CASE BULGE



SCHEMATIC DIAGRAM - 304

7200 VOLTS 3 PH KVBIL  
 250 KVAR 50 HZ  
 CAT. 16L0279WH3  
 3.5 GALS.  
 MFG DATE  
 READ GEH-2743  
 101N171

<b>GE ENERGY</b> FORT EDWARD, N.Y., U.S.A.	SIZE A	<h1>OUTLINE</h1> <h2>16L0279WH3</h2>	SHEET 2	CONT ON 3	DISTR. TO
	DRAWN B.ROSS ISSUED				