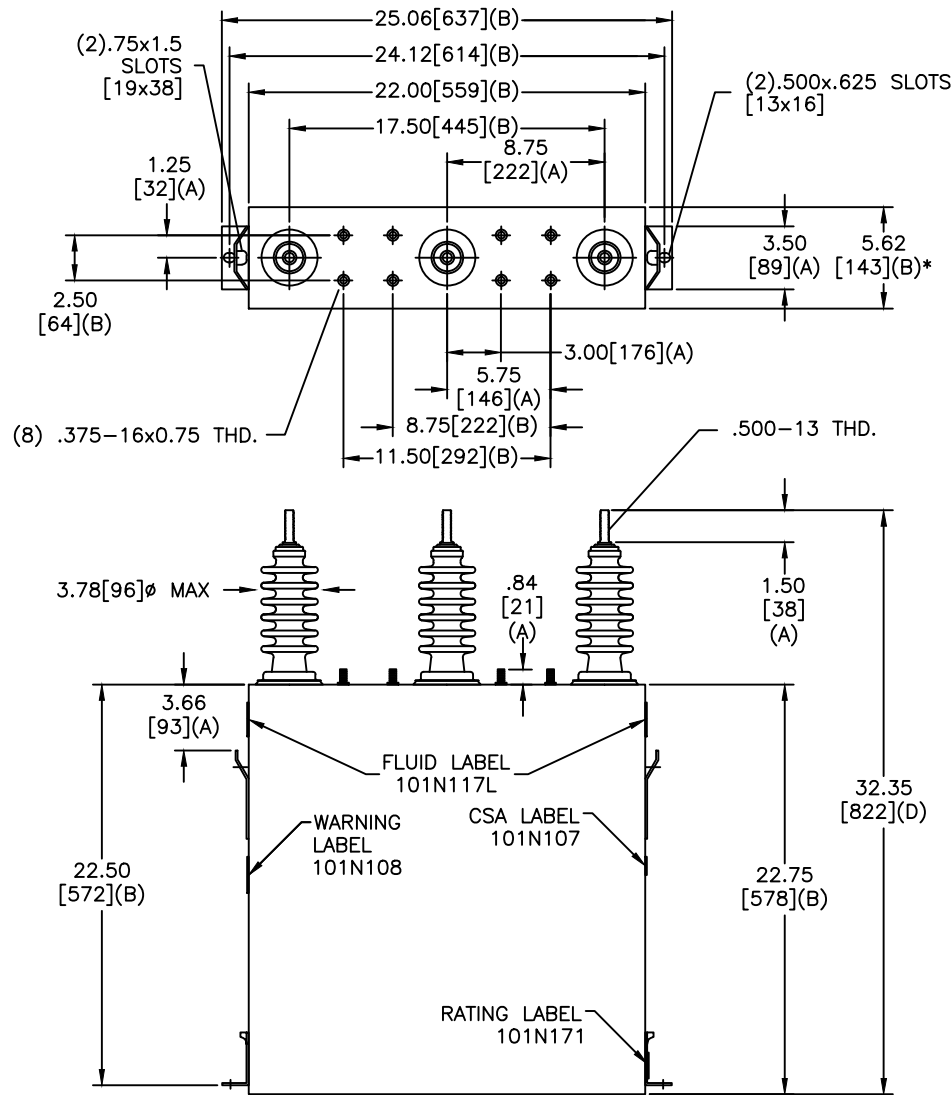
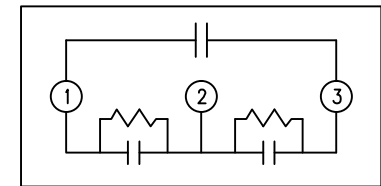


SIZE A	DWG NO 16L0280WH3	SHT 2	REV 2
REV 2	DESCRIPTION UPDATE TO EXT FOIL	DATE 4/8/11	APPROVED DMR



TOL	+/-
A	.06
B	.12
C	.18
D	.25

* UP TO +.75 CASE BULGE



SCHEMATIC DIAGRAM - 304

DELTA CONN
 7200 V 3 PH KVBL
 300 KVAR 50 Hz
 CAT 16L0280WH3 SN
 3.7 GAL.
 MFG DATE
 101N171 READ GEH- 2743

GE ENERGY FORT EDWARD, N.Y., U.S.A.		SIZE A	EST WT 163/74 LB/KG	<h1>OUTLINE</h1> <h2>16L0280WH3</h2>
DRAWN	LOWERY	DATE	3/26/2003	
ISSUED		DATE	2/14/2007	

SCALE		SHEET	2	CONT	ON	3
-------	--	-------	---	------	----	---

DISTR. TO