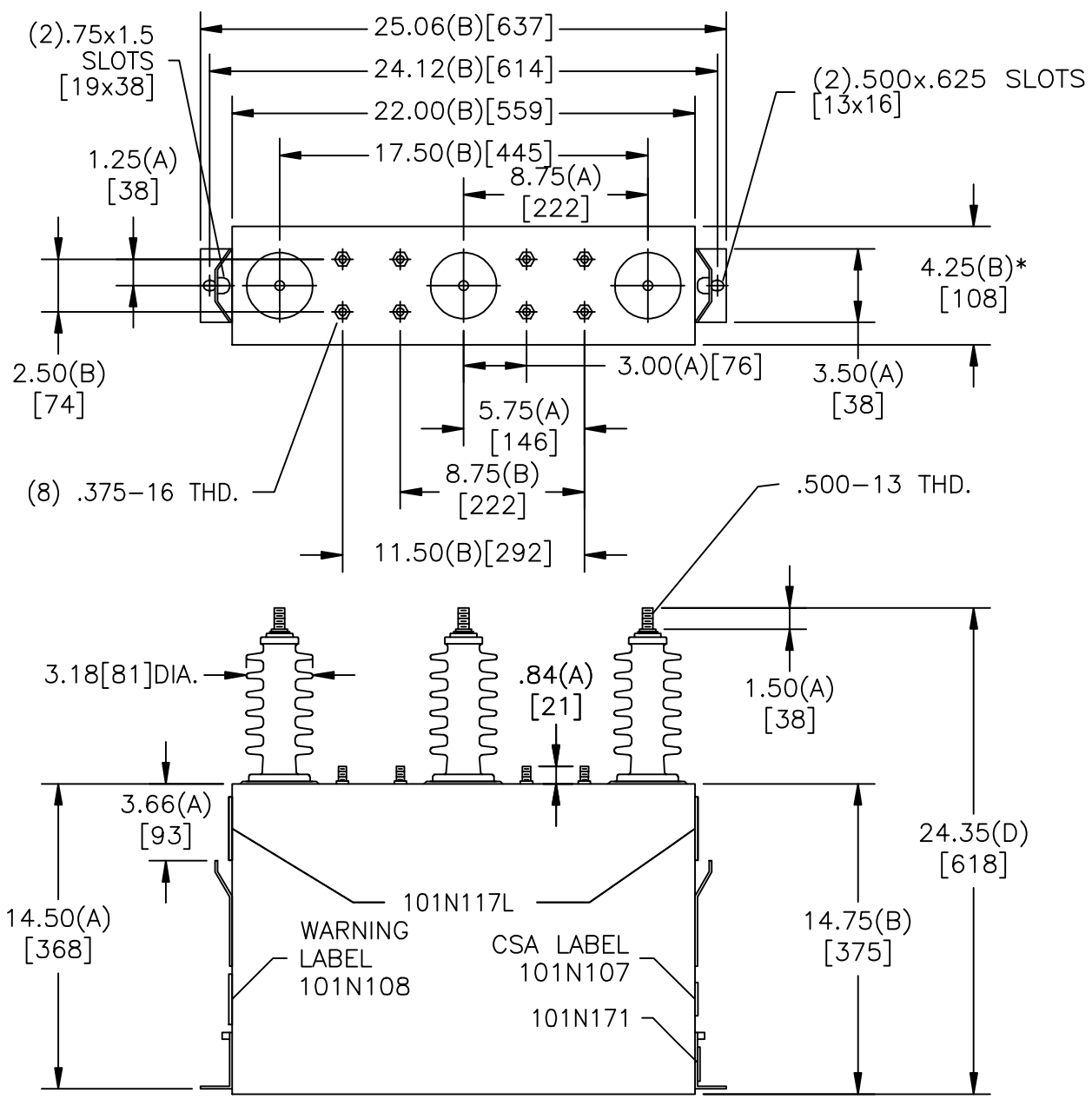
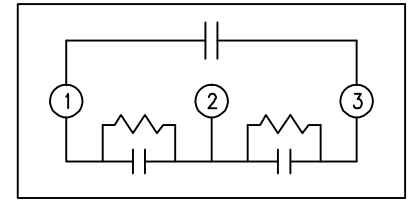


SIZE A	DWG NO 16L0285WH3	SHT 2	REV 1
REV 1	DESCRIPTION 101N117L WAS J	DATE 5/22/2008	APPROVED BTR



TOL	+/-
A	.06
B	.12
C	.18
D	.25

* UP TO +.50 CASE BULGE



SCHEMATIC DIAGRAM - 304

7200 VOLTS 3 PH KVBIL
 150 KVAR 60 HZ
 CAT. 16L0285WH3
 2.2 GALS.
 MFG DATE
 READ GEH-2743
 101N171

GE ENERGY FORT EDWARD, N.Y., U.S.A.	SIZE A	<h1>OUTLINE</h1> <h2>16L0285WH3</h2>	DISTR. TO
	DRAWN LOWERY DATE 3/27/2003 ISSUED DATE 5/22/2008		
SHEET 2 CONT ON -			