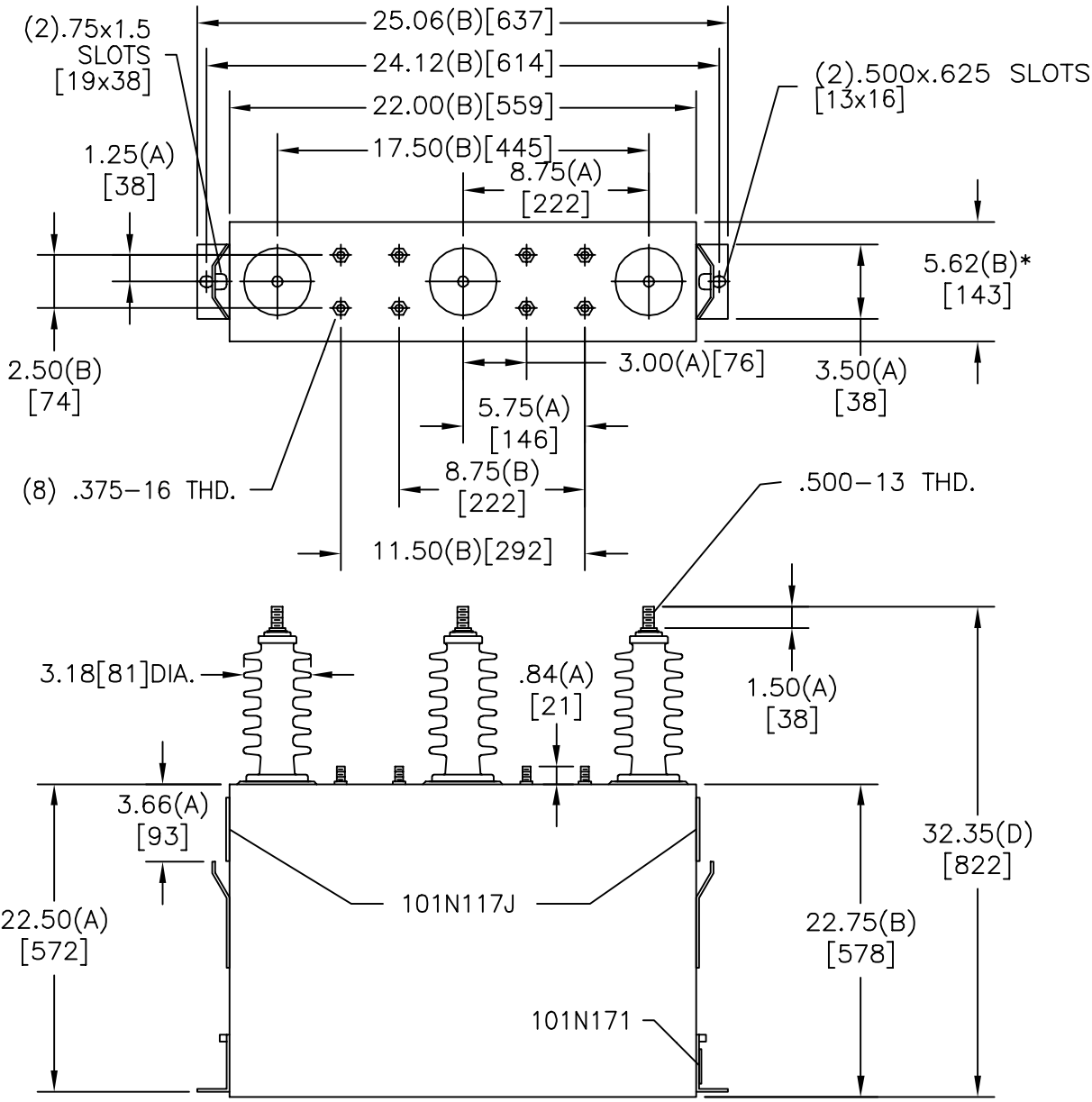
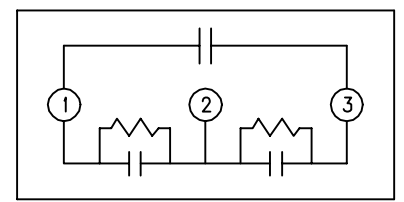


SIZE A	DWG NO 16L0289WH3	SHT 2	REV
REV	DESCRIPTION	DATE	APPROVED



TOL	+/-
A	.06
B	.12
C	.18
D	.25

\* UP TO +.50 CASE BULGE



SCHEMATIC DIAGRAM - 304

7200 VOLTS 3 PH KVBIL  
 350 KVAR 60 HZ  
 CAT. 16L0289WH3  
 3.7 GALS.  
 MFG DATE  
 READ GEH-2743  
 101N171

<b>INDUSTRIAL SYSTEMS</b> FORT EDWARD, N.Y., U.S.A.		SIZE <b>A</b>
DRAWN	LOWERY	DATE MAR 27, 2003
ISSUED		DATE

**OUTLINE**  
**16L0289WH3**

SHEET 2 CONT ON -

DISTR. TO