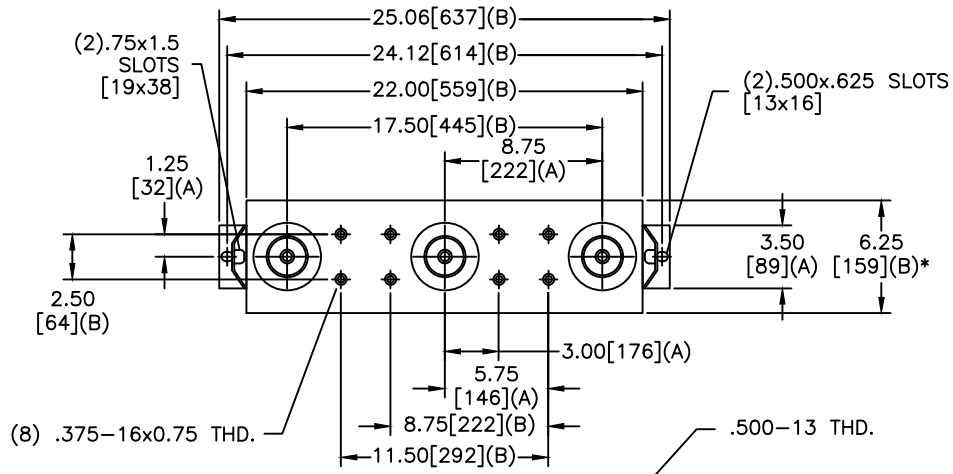
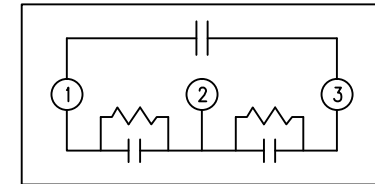
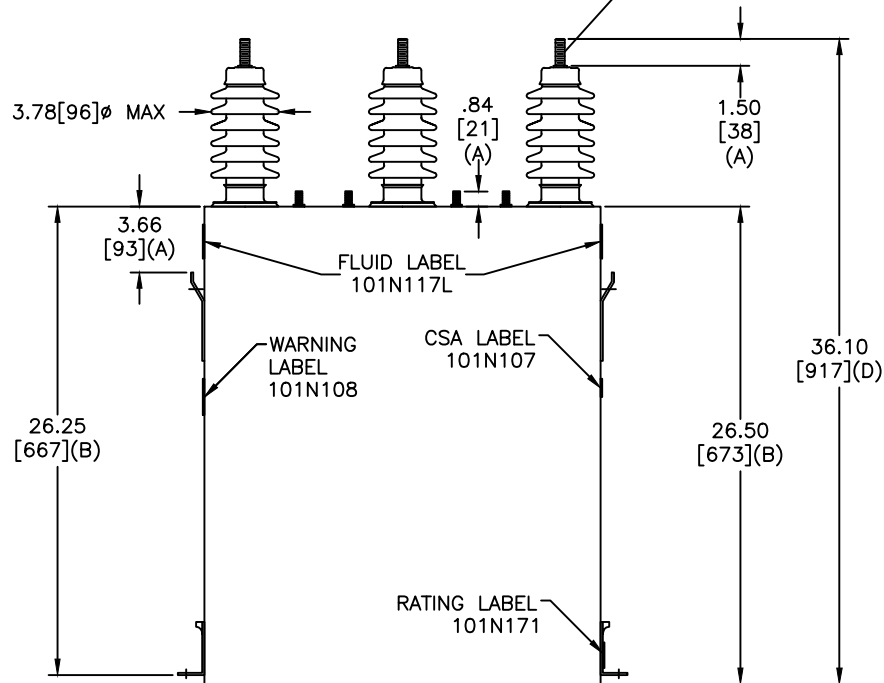


SIZE A	DWG NO 16L0290WH3	SHT 2	REV 1
REV 1	DESCRIPTION 101N117L WAS J	DATE 5/21/2007	APPROVED BTR



TOL	+/-
A	.06
B	.12
C	.18
D	.25

* UP TO +.75 CASE BULGE



SCHEMATIC DIAGRAM - 304

DELTA CONN
 7200 V 3 PH KV BIL
 400 KVAR 60 Hz
 CAT 16L0290WH3 SN
 5.00 GAL.
 MFG DATE
 101N171 READ GEH- 2743

GE ENERGY FORT EDWARD, N.Y., U.S.A.		SIZE A	EST WT 218/99 LB/KG	OUTLINE 16L0290WH3
DRAWN LOWERY	DATE 3/27/2003	SCALE		
ISSUED	DATE 2/15/2007	SHEET 2	CONT ON 3	

DISTR. TO