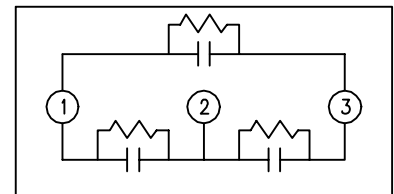
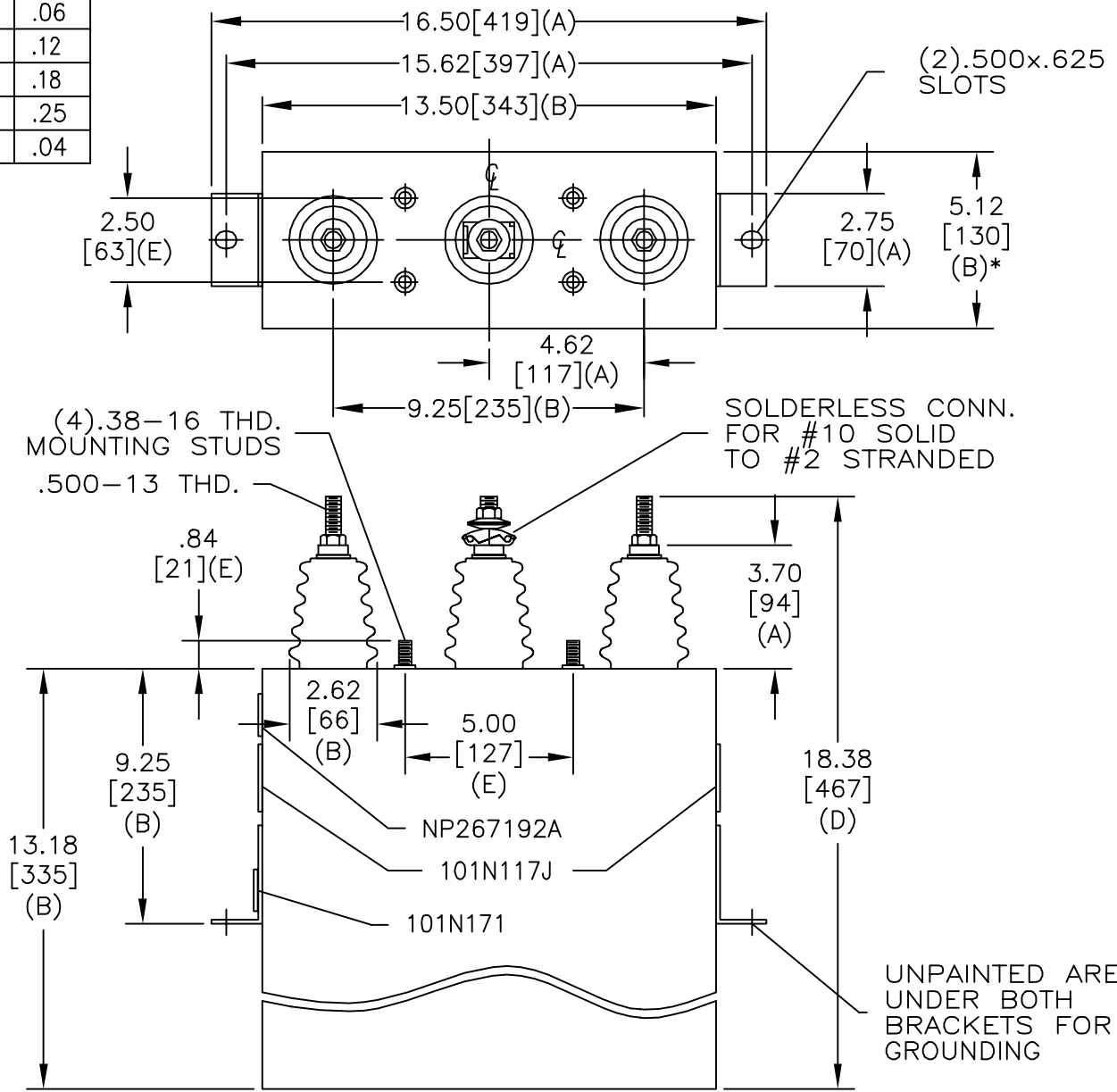


| | | | |
|-----------|----------------------|----------|----------|
| SIZE A | DWG NO 16L0292WH3 | SHT 2 | REV |
| REV | DESCRIPTION | DATE | APPROVED |
| | | | |

| | |
|-----|-----|
| TOL | +/- |
| A | .06 |
| B | .12 |
| C | .18 |
| D | .25 |
| E | .04 |



SCHEMATIC DIAGRAM - 302

4160V 3PH
 150KVAR 50HZ 60KV/BIL
 CAT. 16L0292WH3 NO.
 1.41 GAL.
 MFG DATE
 GEH-2743

101N171

MAX. TERMINAL
 TIGHTENING TORQUE
 15 FT-LBS

NP267192A

| | | | |
|--|----------------------|-----------------------|--------------|
| INDUSTRIAL SYSTEMS FORT EDWARD, N.Y., U.S.A. | SIZE A | OUTLINE 16L0292WH3 | |
| | SCALE | | |
| DRAWN B. ROSS | DATE SEP. 5, 2002 | SHEET 2 | CONT ON 3 |
| ISSUED | DATE | | |

DISTR. TO