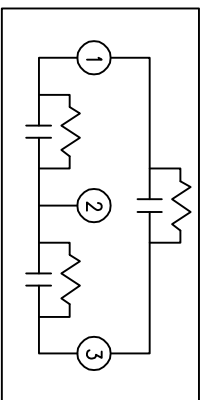
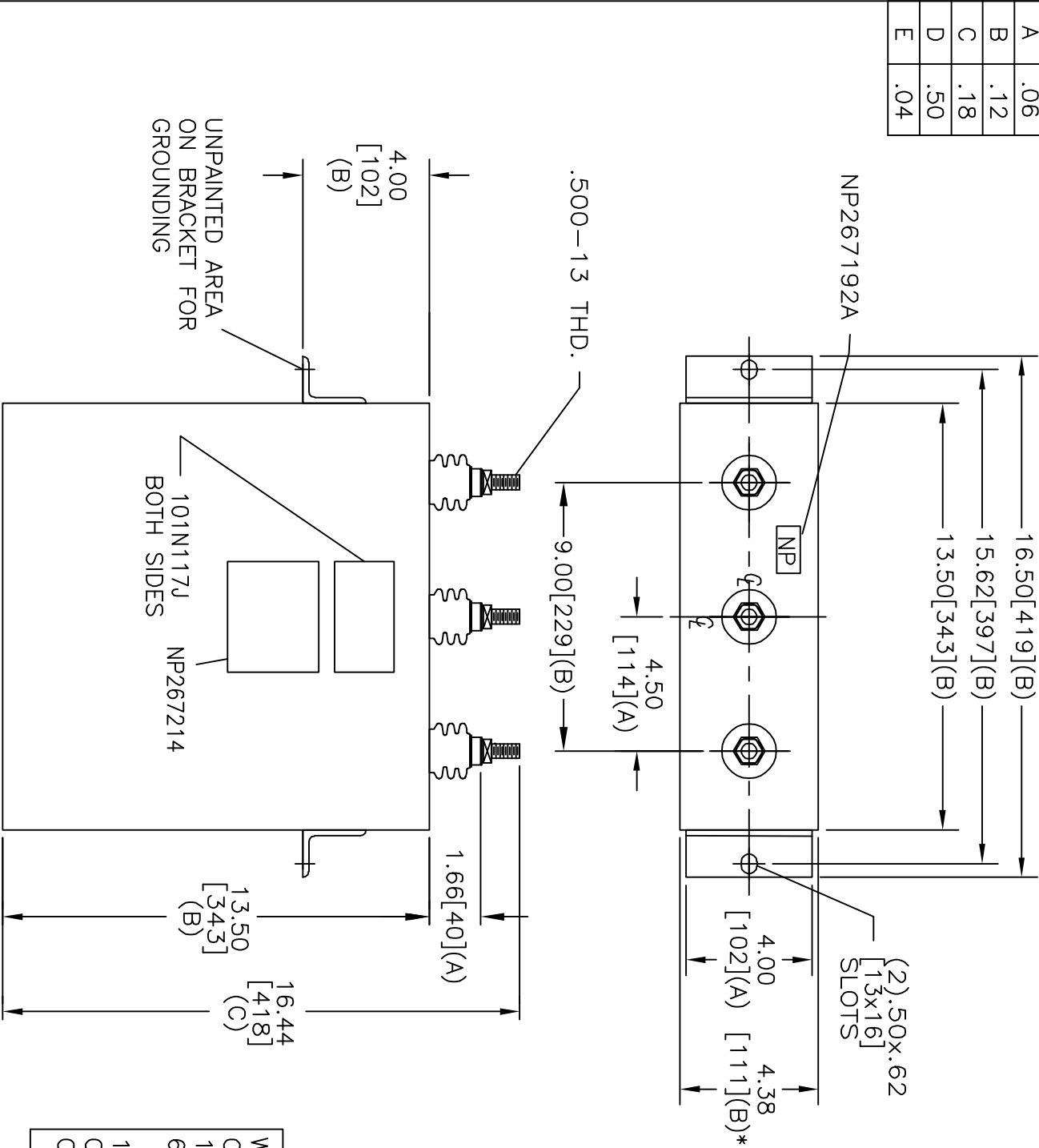


TOL	+/-
A	.06
B	.12
C	.18
D	.50
E	.04

SIZE	DWG NO	SHT	REV
A	16LO293WH3	2	6
REV	DESCRIPTION	DATE	APPROVED
6	/BTR/ BKT WAS 4.12	5/11/05	BTR



SCHEMATIC DIAGRAM - 302

WITH INTERNAL DISCH RESISTORS
CAT. 16LO293WH3 SN
151X1220FG01PC01
65.0 KVAR 600V 60HZ 3PH
1.31 GAL. COMBUSTIBLE LIQUID
CAUTION! BEFORE INSTALLING OR
OPERATING READ GEH-2743

NP267214

* UP TO +.50[13]
CASE BULGE

MAX. TERMINAL
TIGHTENING TORQUE
15 FT-LBS

<div> <div> INDUSTRIAL SYSTEMS FORT EDWARD, N.Y., U.S.A. </div> <div> SIZE A </div> </div>		<div> <div> OUTLINE 16LO293WH3 </div> <div> SHEET 2 </div> </div>	
<div> <div>DRAWN</div> <div>B. ROSS</div> </div>	<div> <div>DATE</div> <div>NOV 20, 2002</div> </div>	<div> <div>SCALE</div> <div></div> </div>	
<div> <div>ISSUED</div> <div></div> </div>	<div> <div>DATE</div> <div>12/04/02</div> </div>	<div> <div>SHEET</div> <div>2</div> </div>	<div> <div>CONT</div> <div>ON</div> </div>