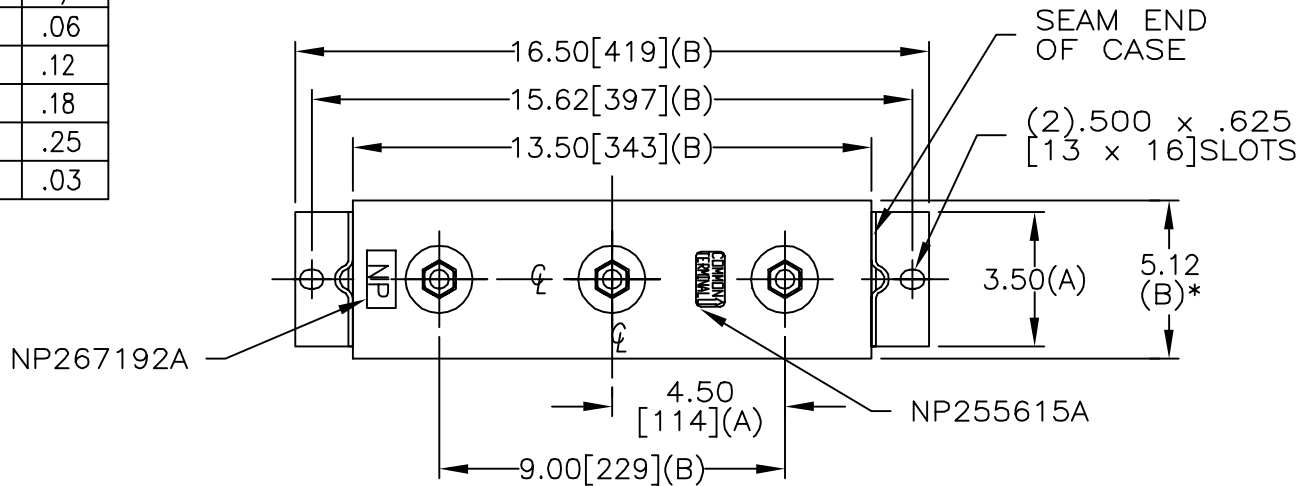


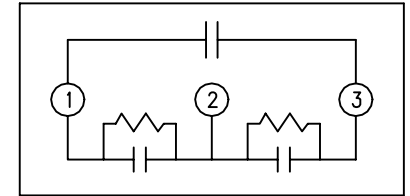
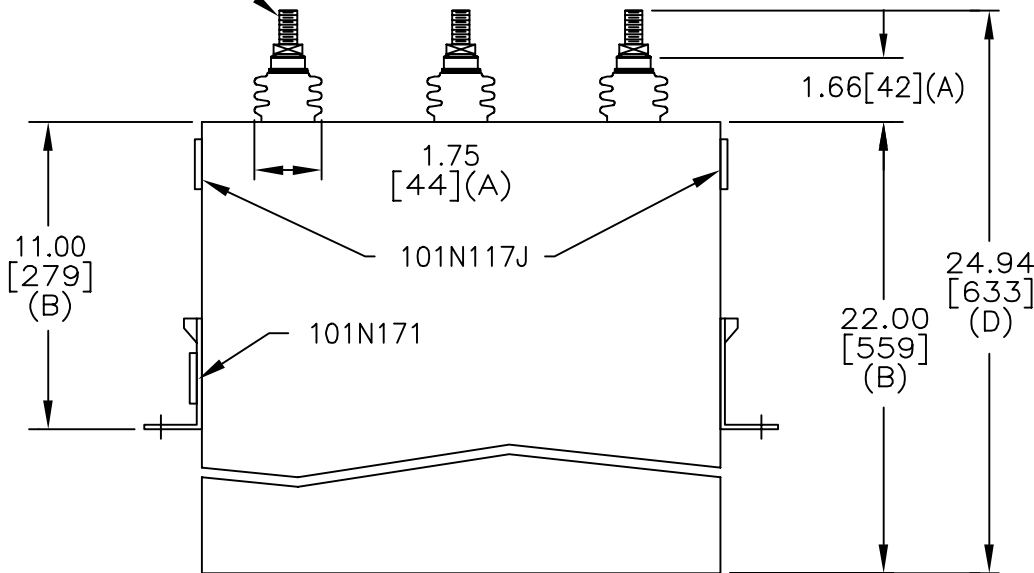
TOL	+/-
A	.06
B	.12
C	.18
D	.25
E	.03

SIZE A	DWG NO 16L0297WH3	SHT 2	REV
REV	DESCRIPTION	DATE	APPROVED



TERM	uF	kVAR
1	318.3	67.5
2	318.3	67.5

.500-13 THD.



SCHEMATIC DIAGRAM - 304

760 V 3 PH kVBIL
 135 KVAR 60 Hz
 CAT 16L0297WH3 SN
 2.10 GAL.
 MFG DATE
 101N171 READ GEH- 2743

* UP TO +.50 [13]
 CASE BULGE

MAX. TERMINAL
 TIGHTENING TORQUE
 15 FT-LBS

NP267192A

INDUSTRIAL SYSTEMS FORT EDWARD, N.Y., U.S.A.	SIZE	A	OUTLINE 16L0297WH3	
	DRAWN			
E. McGinn	DATE	5-15-03	SHEET	2
ISSUED	DATE		CONT	ON 3

DISTR. TO