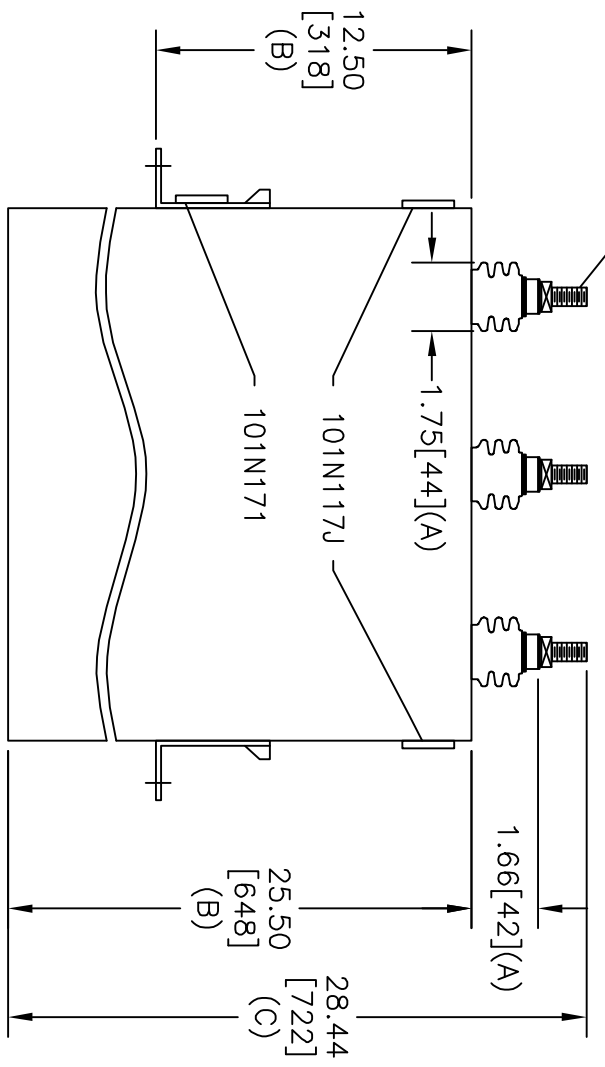
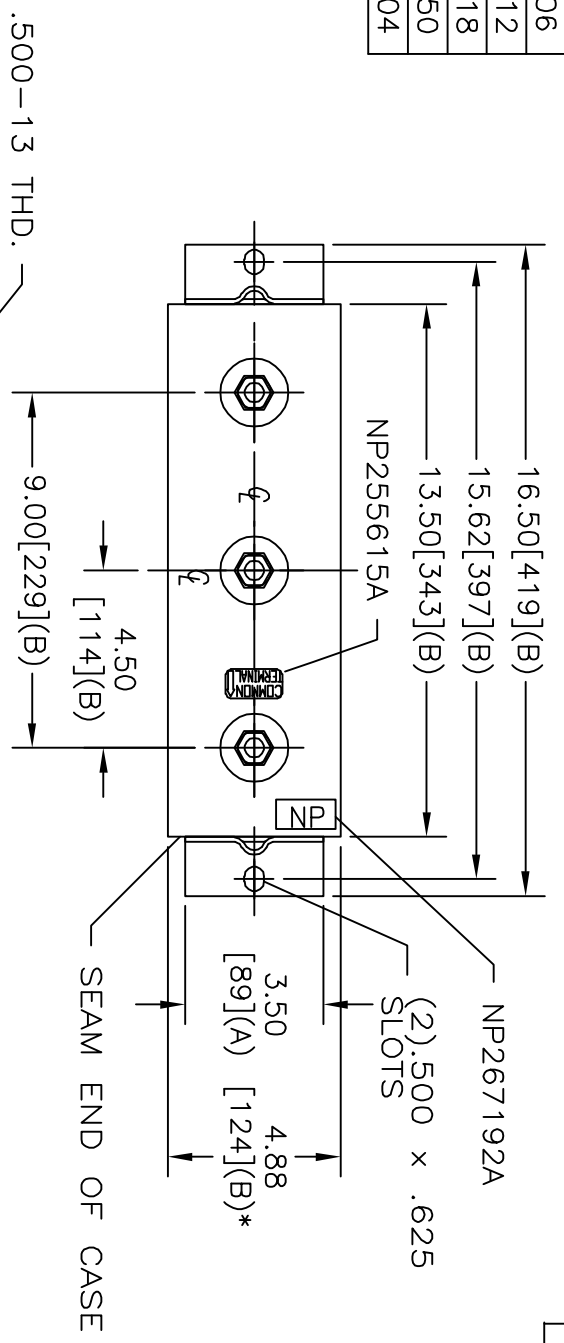
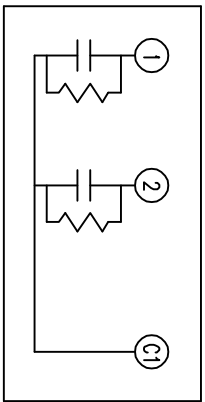


TOL	+/-
A	.06
B	.12
C	.18
D	.50
E	.04



SIZE	DWG NO	SHT	REV
A	16L0339WH3	2	
REV	DESCRIPTION	DATE	APPROVED

TERM	UF	KVAR
1	239.4	130
2	239.4	130



2X130 KVAR SECTIONS  
 1200V 1 PH KVBIL  
 260 KVAR 60 HZ  
 CAT 16L0339WH3 SN  
 2.3 GAL.  
 MFG DATE  
 READ GEH - 2743  
 101N171

\* UP TO +.50  
 CASE BULGE

MAX. TERMINAL  
 TIGHTENING TORQUE  
 15 FT-LBS

NP267192A

INDUSTRIAL SYSTEMS  
 FORT EDWARD, N.Y., U.S.A.

DRAWN	B. ROSS	DATE	JAN 4, 2004
ISSUED		SCALE	A

OUTLINE  
 16L0339WH3

SHEET	2	CONT	3
ON			